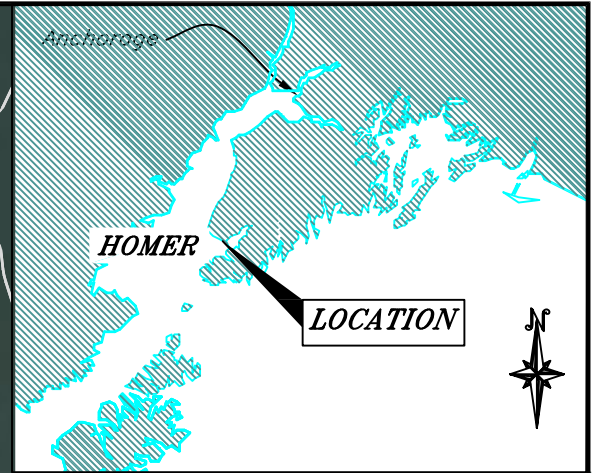
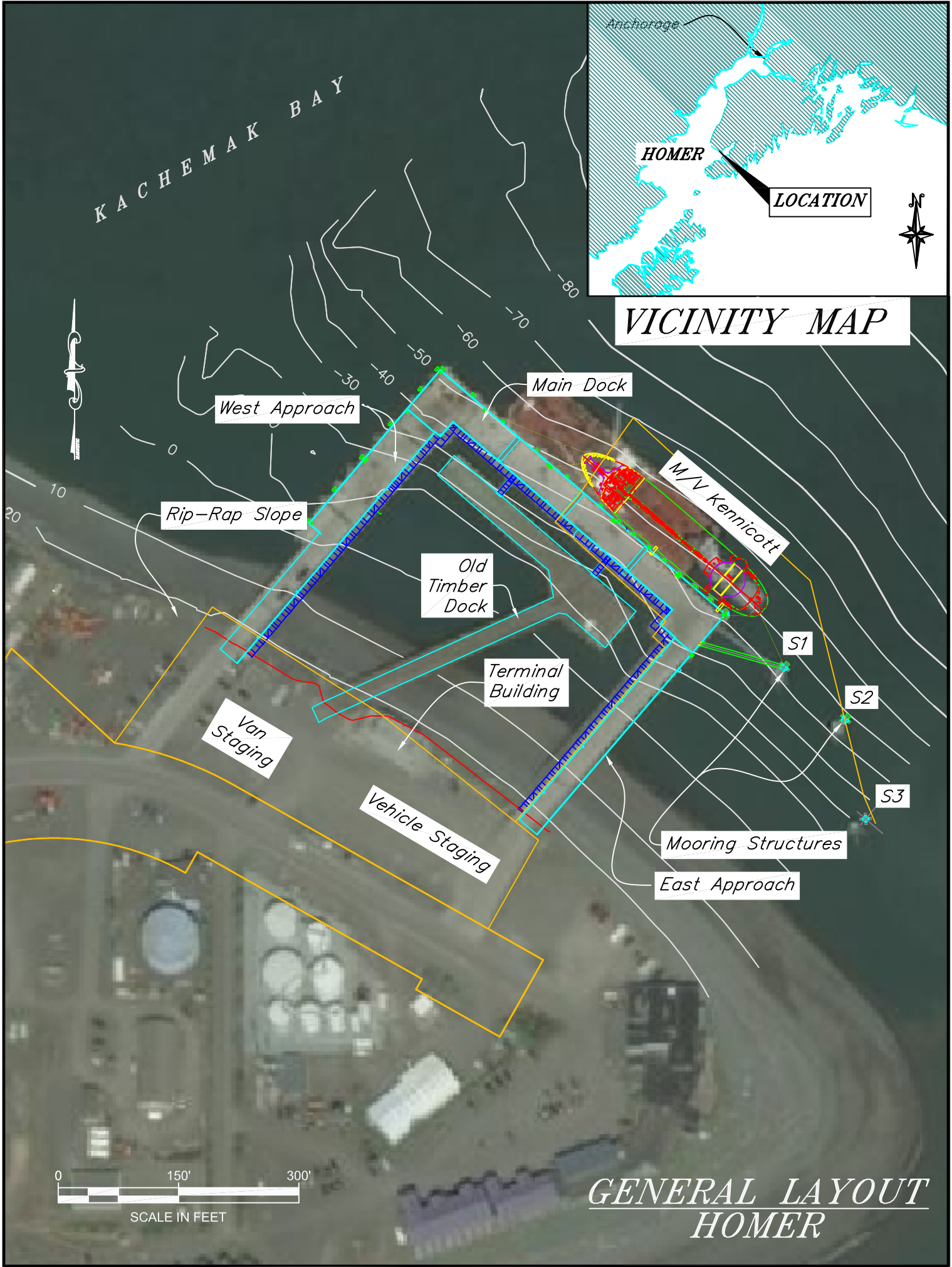


KACHEMAK BAY



VICINITY MAP



SCALE IN FEET

GENERAL LAYOUT
HOMER

Homer City Dock

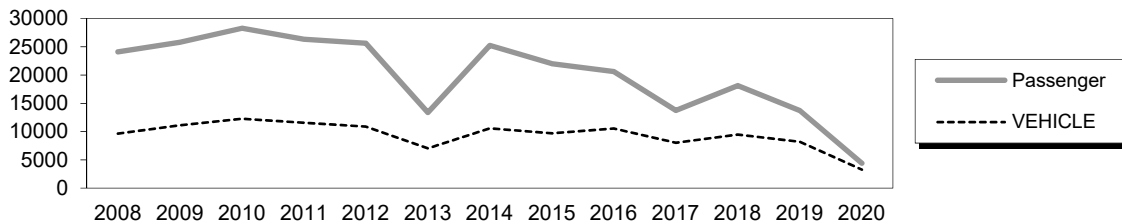
4690 Homer Spit Road

Owner: City of Homer

Terminal Manager: Ron Van Sickle – 907-235-8449

Terminal Description: Homer is a modern U-shaped concrete dock, built around the original timber city dock in 2001. It is owned and maintained by the City of Homer. The facility consists of terminal building and uplands staging area, east and west approach trestles connected to the main dock, two breasting dolphins and one mooring dolphin with one access catwalk. Vehicle and passenger transfer takes place on the city dock. The Coast Guard (USCG) uses the north end of the dock as a berth for their buoy tender. The State provided a portion of construction funding, has priority use and does not pay a docking fee per the MOA with the City.

The past 12 years of total passenger and vehicle traffic at Homer is shown below. The global pandemic caused the drop in 2020.



The most recent above water survey was completed on July 26, 2022. The most recent underwater inspection occurred on September 25, 2018.

Vessels	
Name	Berthing, Alignment
Aurora / Kennicot / Tustumena	Stern/Starboard

Tidal Data (MLLW 0.0 feet)	
EHW	26.1
MHHW	18.3
MHW	17.5
ELW	-5.2

Terminal Building	
Year Built:	1999
Square Footage:	2335 s.f.
Heating System:	Furnace
Fuel Storage:	AST
Fire Protection:	Alarm Pyrotronics
Condition:	Fair

Generator & Building	
This facility does not have a generator.	

Utilities		
	at Terminal	at Ramp
Electrical:	Yes, city & backup power	
Water:	Yes	Yes
Sewer:	Yes (City)	Yes
Telephone:	Yes	Yes
Cable TV:	No	No
Fuel:	Yes, AST	No
Wireless Bridge:	Yes	-

Uplands	
Short-Term Parking:	5 cars, 2 hcp
Long-Term Parking:	N/A
Staging Area:	2000 lineal feet; 250 lineal feet-buses/trucks
Paint Striping:	Yes
Driving Surface:	Asphalt

Approach Trestle (East Side)- Bridge # 1415	
Dimensions:	(1) 30' wide x 296' long Approach (1) 29' wide x 310' long main dock
Type:	Precast Deck/ CIP Pile Caps
Year Built:	1999
Shoreward support:	Concrete abutment
Seaward support:	30" diameter steel pipe piling
Pile Coating:	Epoxy-based paint
Cathodic Protection:	Anodes hang from cables
Lighting:	Overhead tall-mast lights
Condition:	Good
Load Posting Sign:	N/A
Original Design Load:	Uniform Load 500 psf/AASHTO HS25-44/45 Ton Forklift/140 Ton Truck Crane

Dolphins							
Dolphins	Dolphin Piles	Fender Support	Fender Face	Anodes	Built	Cond.	Notes
S1	4B, 1V	2V	UHMW	No	2002	Good	Red navlight & weather station
S2	4B, 1V	2V	UHMW	No	2002	Good	Red navlight
S3	4B, 1V	-	-	No	2002	Good	Red navlight

Catwalks / Gangways								
#	From Struc.	To Struc.	Length / Style / Main Members	Built	Safety Chains?	Cond.	Lighting	Notes
C1	N5	N4	98' / Catwalk / 12"x12" Tube Girders	2007	Yes	New	None	

Terminal Projects			
Year	Project #	Project Name	Description
1961	W6215	Homer Approach & Dock	Dismantled and re-assembled the existing timber city dock with new superstructure.
1993	N/A	Homer Ferry Terminal Staging Area	Constructed paved parking and staging area large enough to provide adequate service for the M/V Tustumena's sailings to Seldovia, Kodiak, and ports on the Southwest AMHS Route.,
1999	753 / STP-021 (43)	Homer Ferry Terminal	Constructed the new terminal building.
2002	N/A	Homer City Dock	Constructed the new concrete U-shaped dock around the existing timber structure. Also built two breasting dolphins and a mooring dolphin.
2007	69062 / SHAK - 021-1 (53)	Homer FT Dock Modifications	Removed existing aluminum catwalk, replaced with new steel catwalk. Installed new swinging bullrails to provide opening for the M/V Tustumena side and aft brow gangways. Installed new pipe bollard for forward spring line.
2011	69054 / SHAK 0003(119)	AMHS Southwest Warehouse	Improved uplands (paving, drainage, utilities, site work) & built a pre-engineering metal warehouse building on Gravel Access Road, within 1/4 mile of the Homer City Dock & AMHS terminal building. Work also included installation of security camera system, fire alarm controls, & new wireless bridge system.
2015	68223	Homer Ferry Terminal Improvements	Replaced 4 fender panels along the dock face, built 5 new fender panels between the existing units, built a wrap-around fender at the east corner, relocated the existing 98' catwalk, refurbished the fender panels on dolphins S1 & S2, built a covered walkway between the parking lot and the main dock.

GENERAL FACILITY EVALUATION

Facility Component	Rating
Uplands	5
Approach Dock	7
Main Dock	7
Fenders	7

9	EXCELLENT CONDITION
8	VERY GOOD CONDITION - no problems noted
7	GOOD CONDITION - some minor problems.
6	SATISFACTORY CONDITION - structural elements show minor deterioration
5	FAIR CONDITION - all primary structural elements are sound but may have minor corrosion, cracking or chipping. May include minor erosion on bridge piers.
4	POOR CONDITION - advanced corrosion, deterioration, cracking or chipping. Also significant erosion of concrete bridge piers.
3	SERIOUS CONDITION - corrosion, deterioration, cracking and chipping, or erosion of concrete bridge piers have seriously affected deck, superstructure, or substructure. Local failures are possible.
2	CRITICAL CONDITION - advanced deterioration of deck, superstructure, or substructure. May have cracks in steel or concrete, or erosion may have removed substructure support. It may be necessary to close the bridge until corrective action is taken.
1	"IMMINENT" FAILURE CONDITION - major deterioration or corrosion in deck, superstructure, or substructure, or obvious vertical or horizontal movement affecting structure stability. Bridge is closed to traffic but corrective action may put back in light service.
0	FAILED CONDITION - out of service - beyond corrective action
N	Not applicable

For a copy of the latest facility inspection reports contact the AK DOT&PF Marine Design Department. Contact information is located in the Comments and Feedback section.