

4 (f) ROW Changes

- Alaska Chilkat Bald Eagle Preserve (Preserve)
- Existing ROW to be allocated to Preserve
- Proposed ROW acquisition within Preserve
- Special Use Permit Area for Stream Mitigation in Preserve

- Mile Post Points
- Proposed Centerline
- Existing ROW
- Proposed shift in ROW
- Eagle Nest *Eagle Nests 2012 Survey*
- Eagle Nest 330' Radius

Note: The stream mitigation is still in design for this centerline and is not shown in this map set.

**Alaska Chilkat Bald Eagle Preserve
Property Acquisition and
ROW Relinquishment**

TS 28/29/30 S, R 56/57/58/59 E,
Copper River Meridian, Alaska

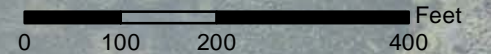
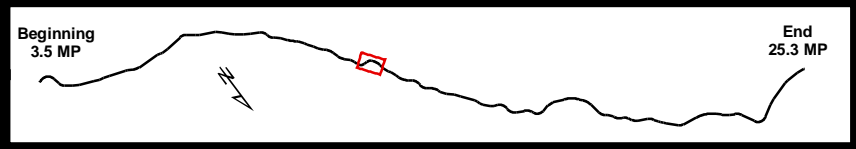


STATE OF ALASKA
DEPARTMENT OF TRANSPORTATION
AND PUBLIC FACILITIES
DOT & PF Project No. 68606
HAINES HIGHWAY
MILEPOST 3.5 - 25.3

Haines, Alaska

DATE: July 08, 2015

FIGURE SET B (1 OF 3)



4 (f) ROW Changes

- Alaska Chilkat Bald Eagle Preserve (Preserve)
- Existing ROW to be allocated to Preserve
- Proposed ROW acquisition within Preserve
- Special Use Permit Area for Stream Mitigation in Preserve

- Mile Post Points
- Proposed Centerline
- Existing ROW
- Proposed shift in ROW
- Eagle Nest *Eagle Nests 2012 Survey*
- Eagle Nest 330' Radius

Note: The stream mitigation is still in design for this centerline and is not shown in this map set.

**Alaska Chilkat Bald Eagle Preserve
Property Acquisition and
ROW Relinquishment**

TS 28/29/30 S, R 56/57/58/59 E,
Copper River Meridian, Alaska

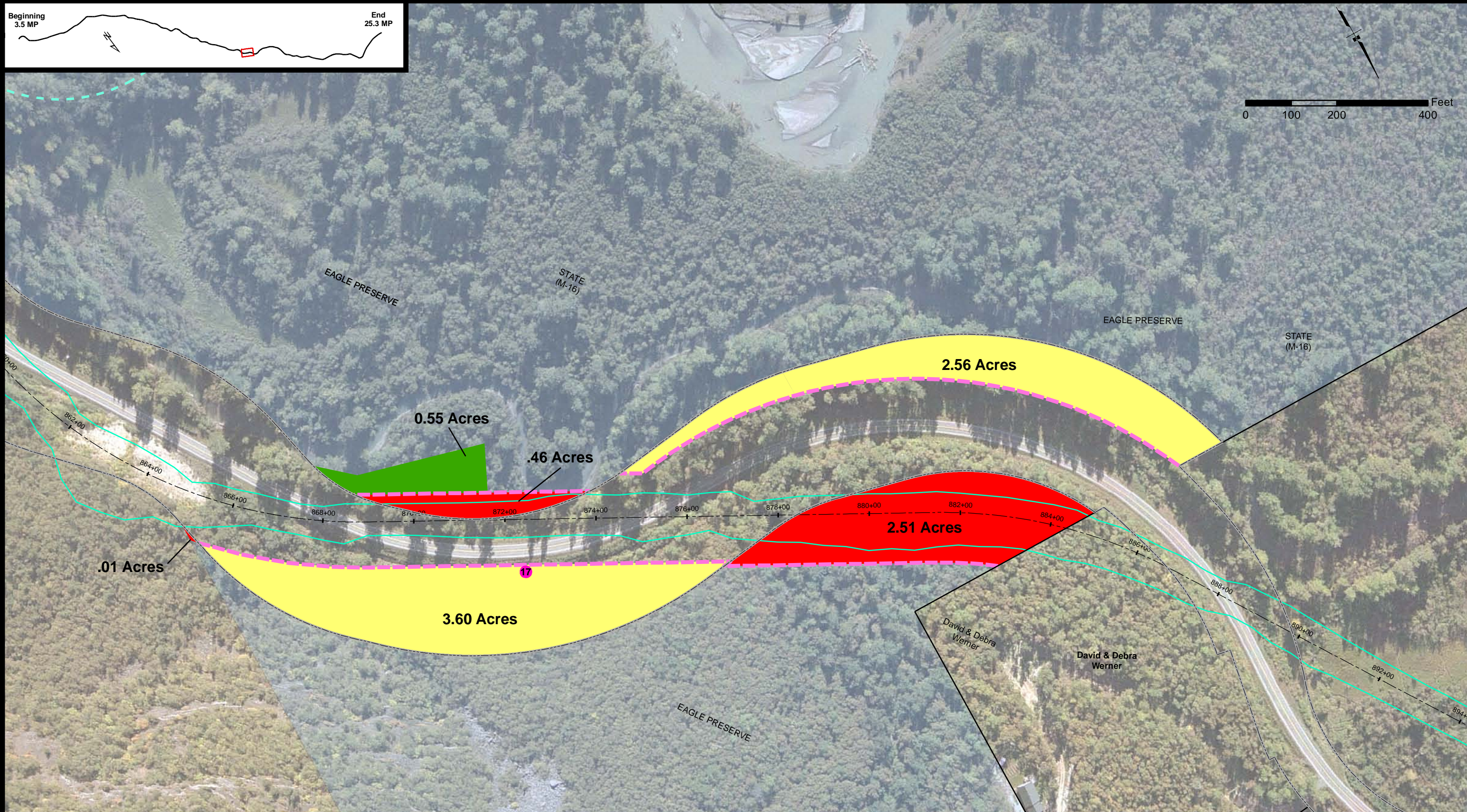
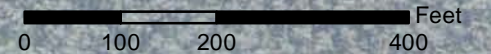
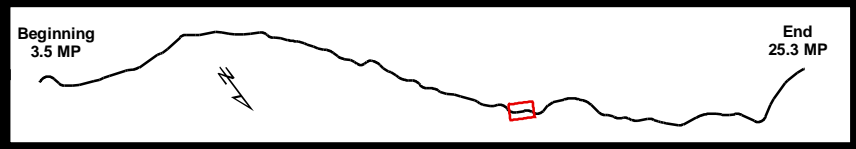


STATE OF ALASKA
DEPARTMENT OF TRANSPORTATION
AND PUBLIC FACILITIES
DOT & PF Project No. 68606
HAINES HIGHWAY
MILEPOST 3.5 - 25.3

Haines, Alaska

DATE: July 08, 2015

FIGURE SET B (2 OF 3)



4 (f) ROW Changes

- Alaska Chilkat Bald Eagle Preserve (Preserve)
- Existing ROW to be allocated to Preserve
- Proposed ROW acquisition within Preserve
- Special Use Permit Area for Stream Mitigation in Preserve

- Mile Post Points
- Proposed Centerline
- Existing ROW
- Proposed shift in ROW
- Eagle Nest Eagle Nests 2012 Survey
- Eagle Nest 330' Radius

Note: The stream mitigation is still in design for this centerline and is not shown in this map set.

**Alaska Chilkat Bald Eagle Preserve
Property Acquisition and
ROW Relinquishment**

TS 28/29/30 S, R 56/57/58/59 E,
Copper River Meridian, Alaska



STATE OF ALASKA
DEPARTMENT OF TRANSPORTATION
AND PUBLIC FACILITIES
DOT & PF Project No. 68606
HAINES HIGHWAY
MILEPOST 3.5 - 25.3

Haines, Alaska

DATE: July 08, 2015

FIGURE SET B (3 OF 3)