

PATH: C:\UNITS\1000R\10-2013 EIS DWGSET\100\_2013 EIS  
 EAST LYNN PLANS.DWG

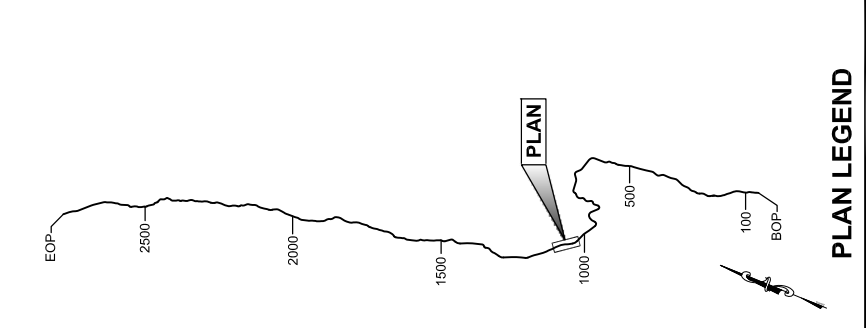
GEARY, NATE (DOT)  
 TAB: EL1.dwg, October 04, 2013 12:46:01 PM

APPENDUM NUMBER

ATTACHMENT NUMBER

RECORD OF REVISIONS

NO.	DATE	DESCRIPTION



DRAFT

DESIGNED BY:  
 DRAWN BY:

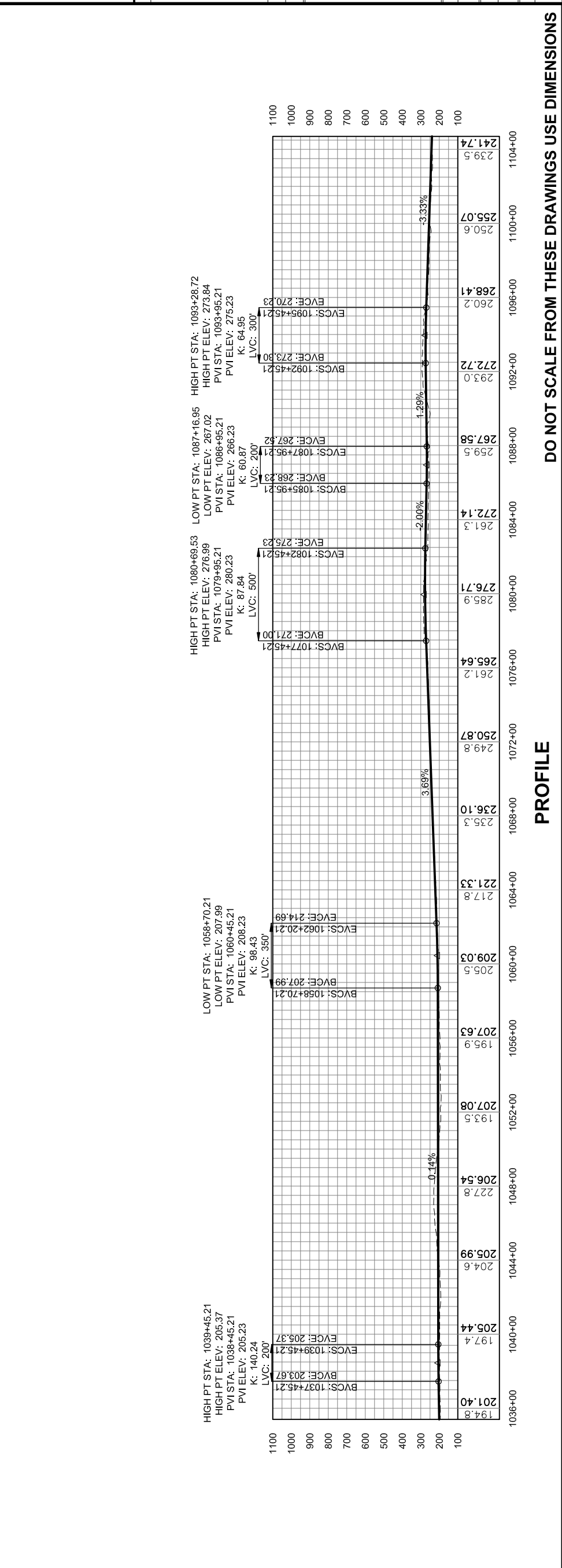
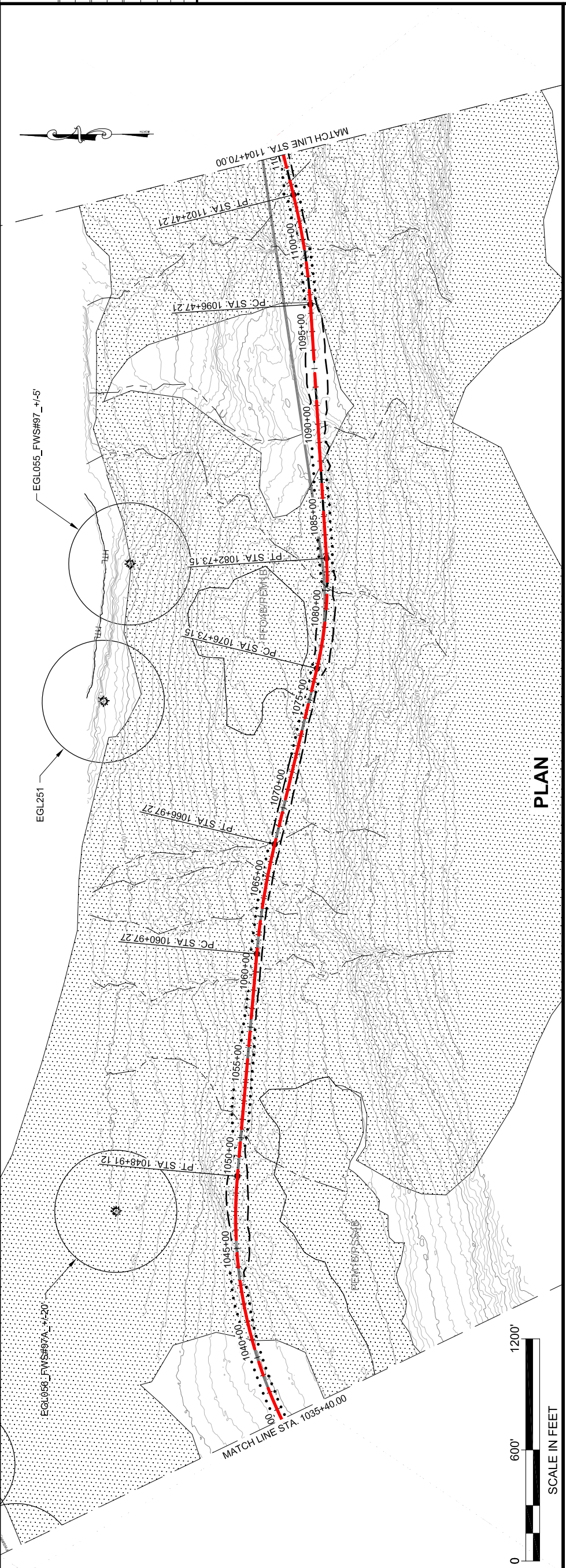
STATE OF ALASKA  
 DEPARTMENT OF TRANSPORTATION  
 & PUBLIC FACILITIES  
 SOUTHEAST REGION

**JNU-EAST LYNN CANAL  
 HIGHWAY ALTERNATIVE 2B  
 PROJECT #71100**

**2013 EIS  
 PLAN VIEW**

PROJECT DESIGNATION  
**71100**

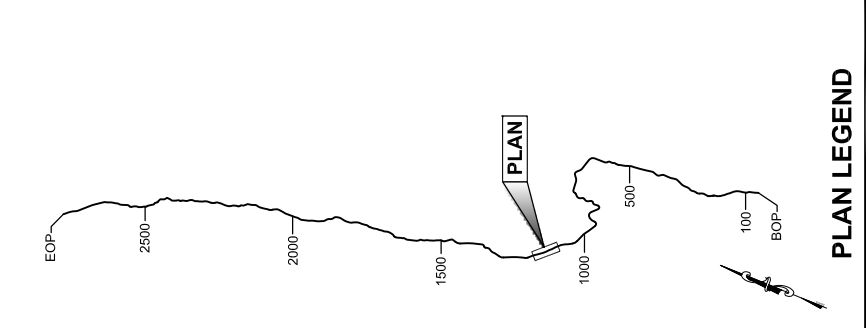
STATE	ALASKA
YEAR	2013
SHEET NUMBER	EL14
TOTAL SHEETS	38



*This page intentionally left blank.*

PATH: C:\UNITS\10\10\10\10\2013 EIS DWGSET\71100\_2013 EIS  
 GEARY, NATE (DOT)  
 TAB: EL1.dwg, October 04, 2013 12:46:29 PM

RECORD OF REVISIONS	
NO.	DESCRIPTION



CHECKED BY:

**PLAN LEGEND**

**DRAFT**

DESIGNED BY:  
 DRAWN BY:

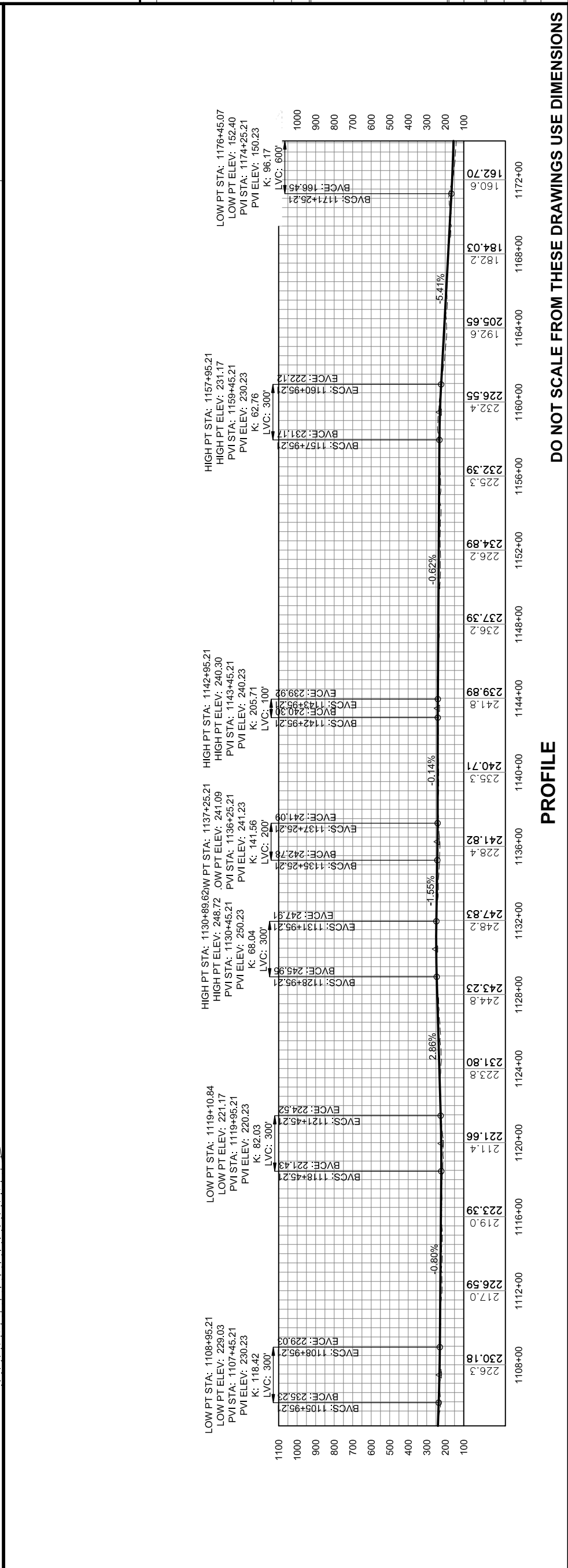
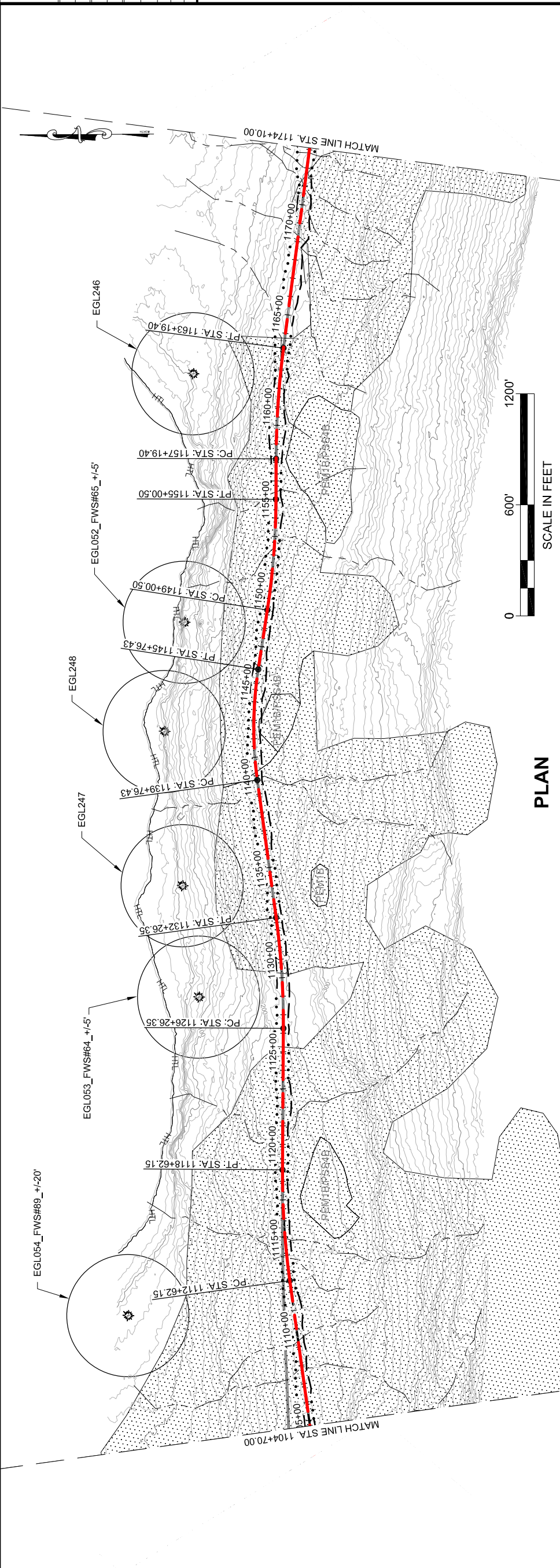
STATE OF ALASKA  
 DEPARTMENT OF TRANSPORTATION  
 & PUBLIC FACILITIES  
 SOUTHEAST REGION

JNU-EAST LYNN CANAL  
 HIGHWAY ALTERNATIVE 2B  
 PROJECT #71100

**2013 EIS  
 PLAN VIEW**

PROJECT DESIGNATION  
**71100**

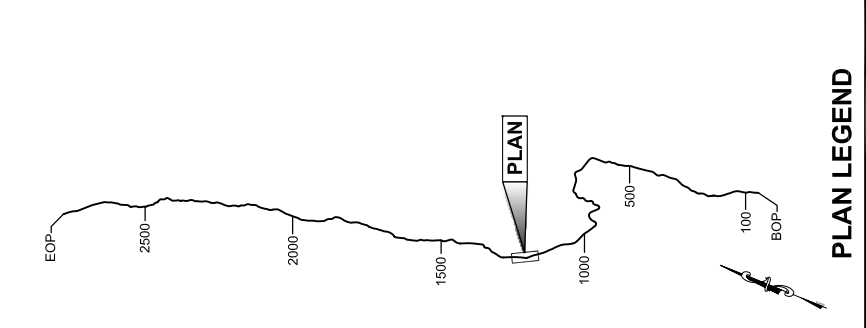
STATE	ALASKA
YEAR	2013
SHEET NUMBER	EL15
TOTAL SHEETS	38



*This page intentionally left blank.*

PATH: C:\UNITS\10\DR\10-2013 EIS DWGSET\100\_2013 EIS  
 GEARY, NATE (DOT)  
 TAB: EL1.dwg, October 04, 2013 12:46:49 PM

RECORD OF REVISIONS	
NO.	DATE



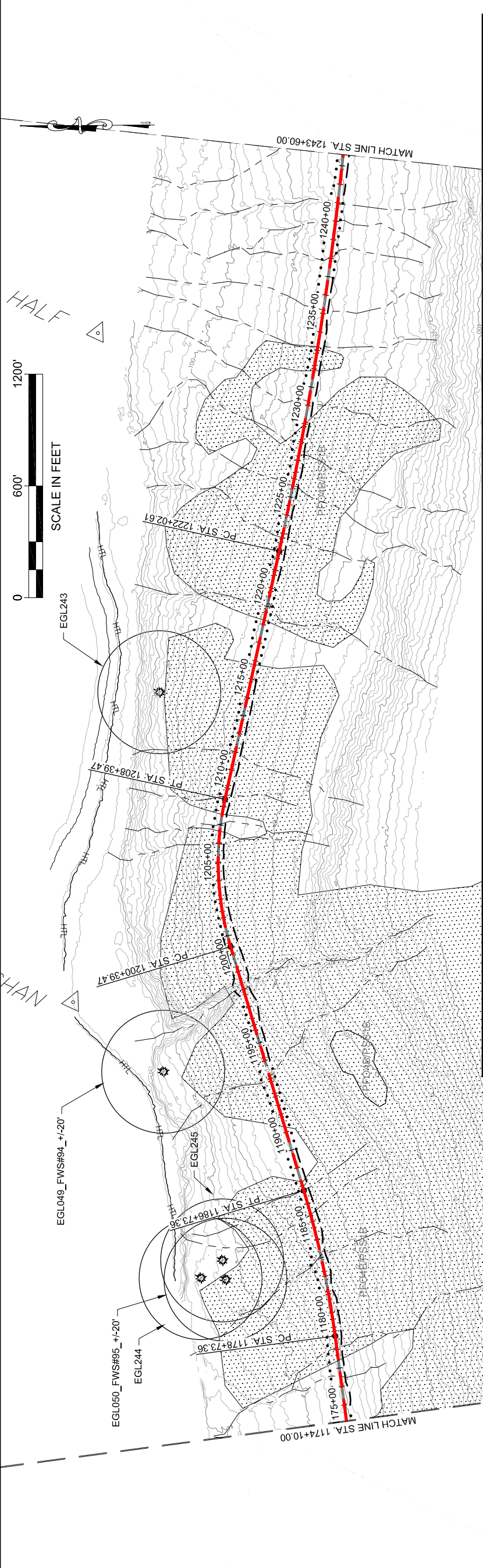
**PLAN LEGEND**

CHECKED BY:

**DRAFT**

DESIGNED BY:  
 DRAWN BY:  
 STATE OF ALASKA  
 DEPARTMENT OF TRANSPORTATION  
 & PUBLIC FACILITIES  
 SOUTHEAST REGION  
 JUNU-EAST LYNN CANAL  
 HIGHWAY ALTERNATIVE 2B  
 PROJECT #71100

PROJECT DESIGNATION	71100
STATE	ALASKA
YEAR	2013
SHEET NUMBER	EL16
TOTAL SHEETS	38



**LEGEND**

	CURRENT ALIGNMENT
	PROPOSED FILL SLOPE
	PROPOSED CUT SLOPE
	PROPOSED WALL
	2006 FEIS ALIGNMENT
	2008 CORP PERMIT ALIGNMENT

**GEO HAZARD AREA LEGEND**

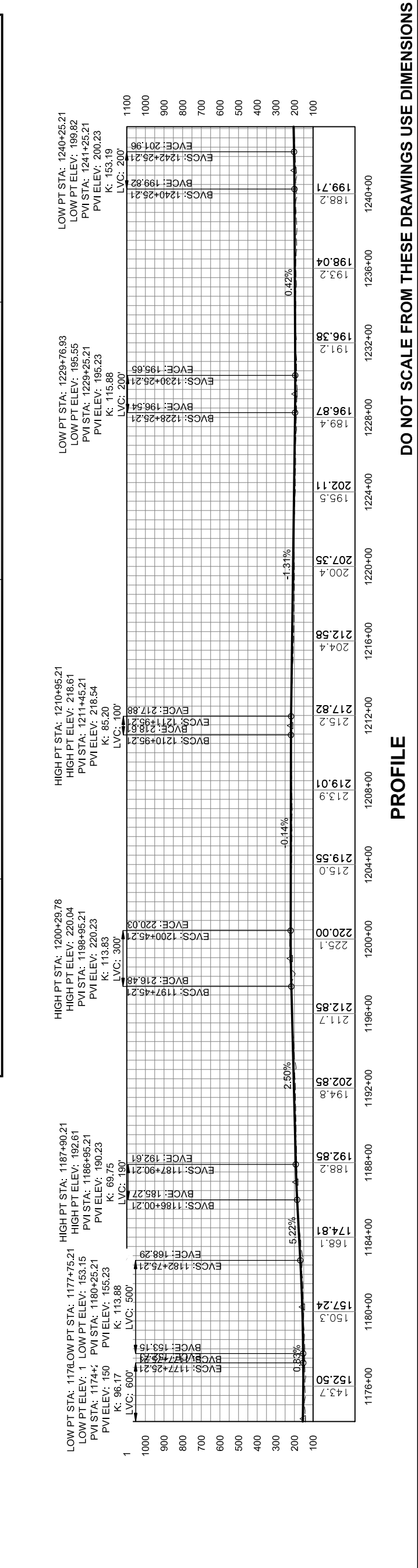
	BRIDGES
	WETLAND
	DEBRIS FLOW
	HAZARD ROCK
	LAND SLIDE
	ROCK FALL
	ROCK SLIDE
	SOIL RAVELING

**PLAN**

AVAILANCHE CHUTE

AVAILANCHE STARTING ZONE

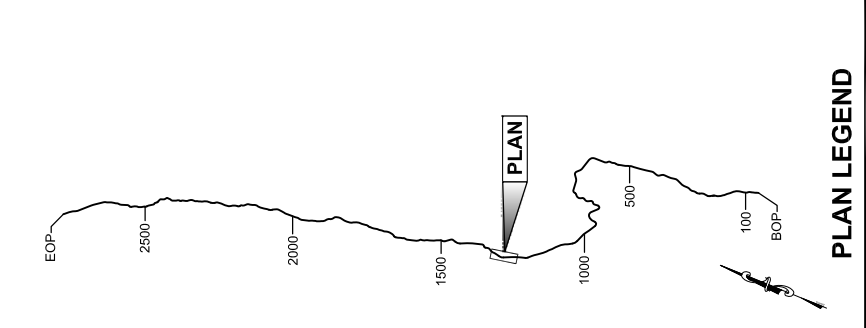
EAGLE TREE



*This page intentionally left blank.*

PATH: C:\UNITS\10\ORDER\10-2013 EIS DWGSET\1100\_2013 EIS  
 GEARY, NATE (DOT)  
 TAB: EL1 Friday, October 04, 2013 12:47:19 PM

RECORD OF REVISIONS	
NO.	DESCRIPTION



DRAFT

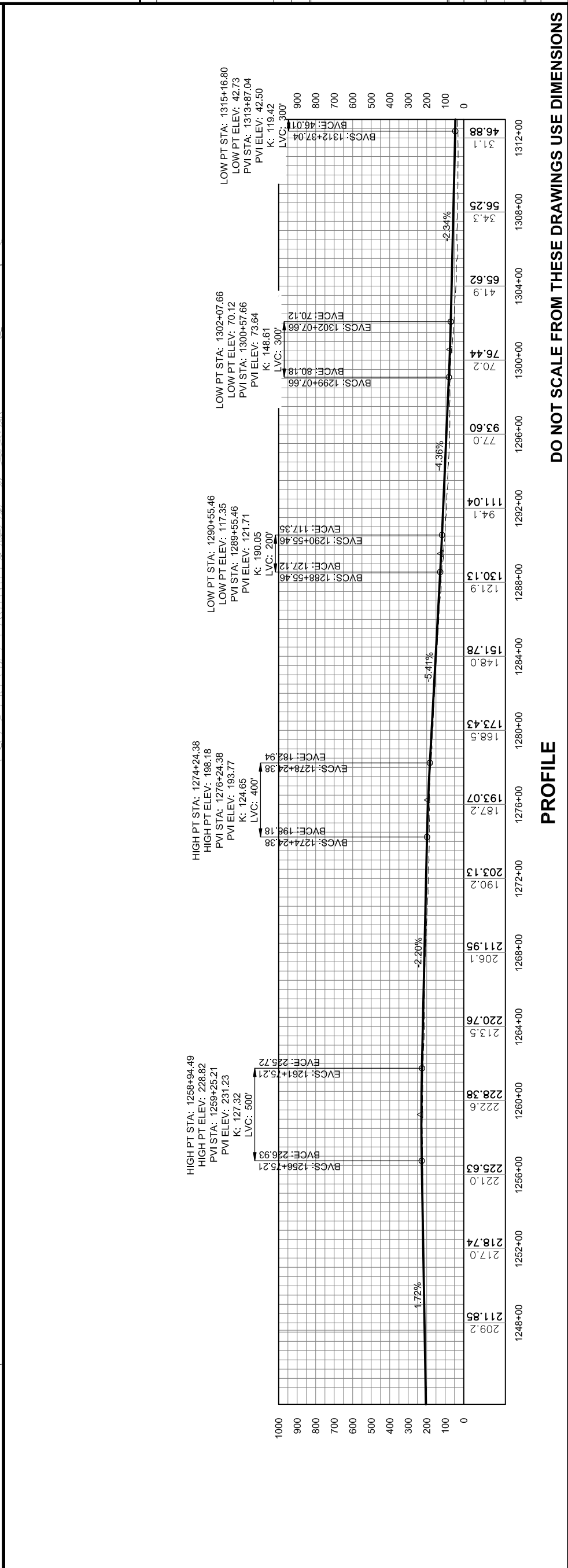
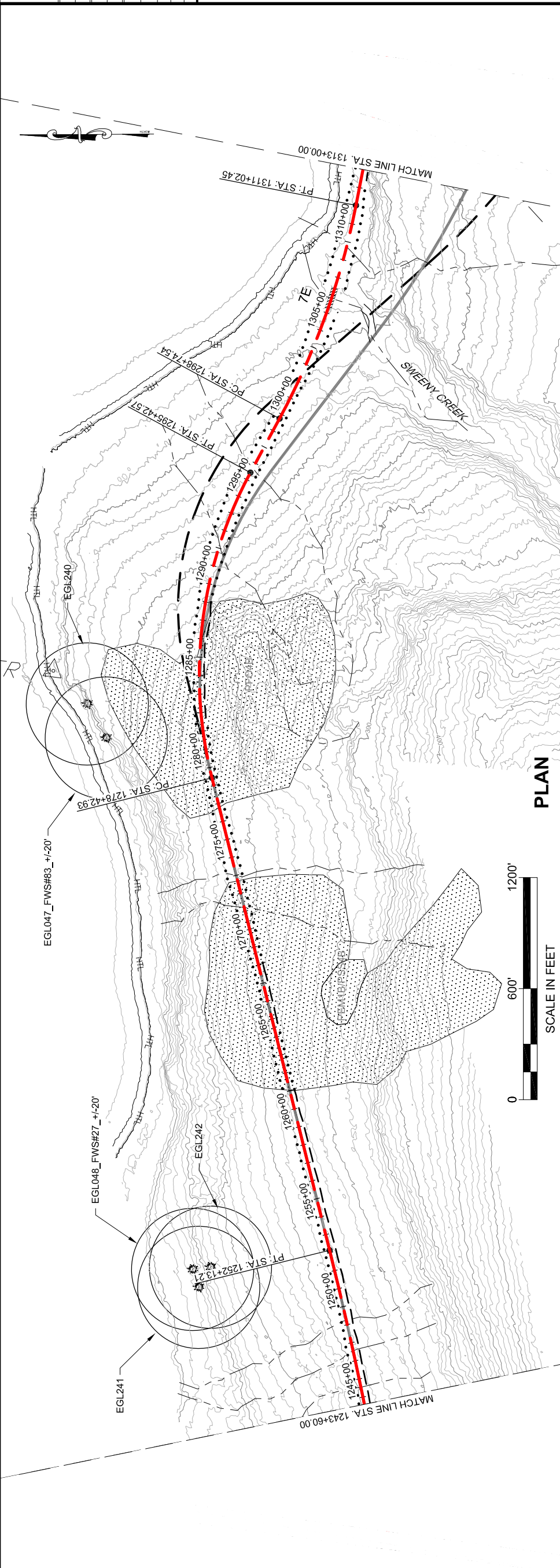
STATE OF ALASKA  
 DEPARTMENT OF TRANSPORTATION  
 & PUBLIC FACILITIES  
 SOUTHEAST REGION

**JNU-EAST LYNN CANAL  
 HIGHWAY ALTERNATIVE 2B  
 PROJECT #71100**

**2013 EIS  
 PLAN VIEW**

PROJECT DESIGNATION  
**71100**

STATE	ALASKA
YEAR	2013
SHEET NUMBER	EL17
TOTAL SHEETS	38



*This page intentionally left blank.*



GEARY, NATE (DOT)  
 TAB: EL1.dwg, October 04, 2013 12:47:48 PM

RECORD OF REVISIONS

NO.	DATE	DESCRIPTION

ATTACHMENT NUMBER

ATTACHMENT NUMBER

PROJECT DESIGNATION

71100

STATE

ALASKA

YEAR

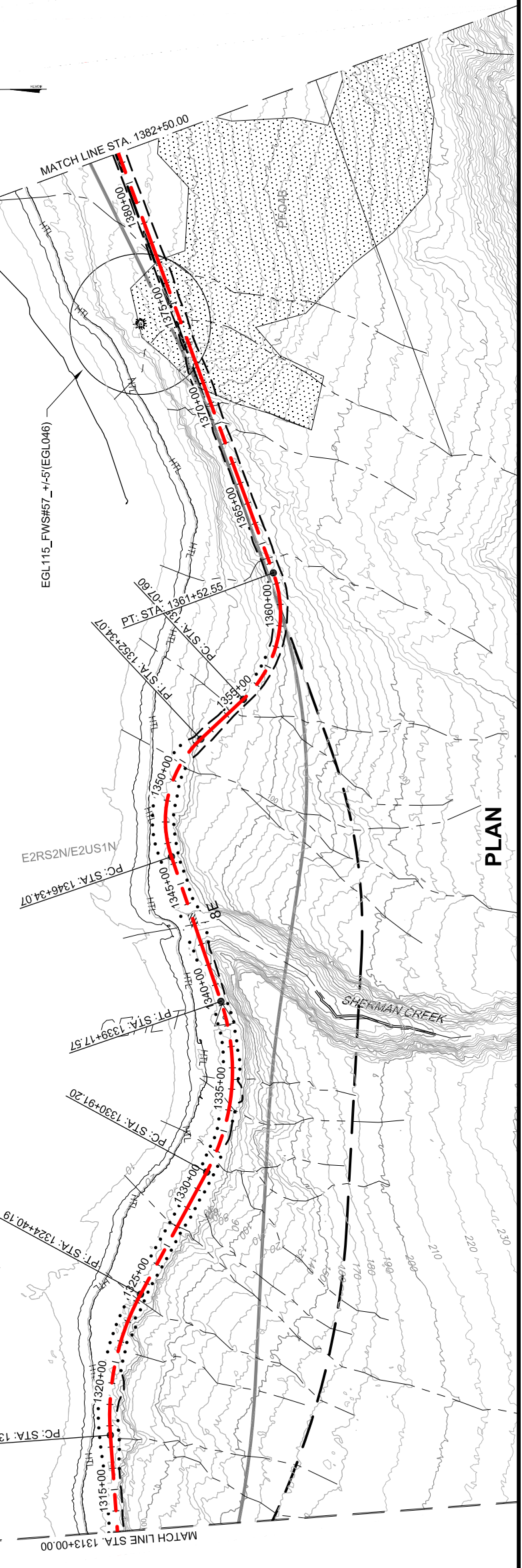
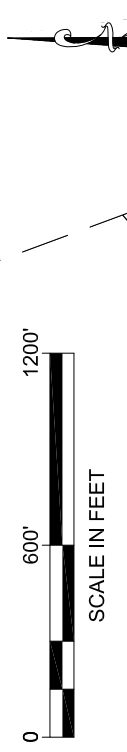
2013

SHEET NUMBER

EL18

TOTAL SHEETS

38



PLAN

PLAN LEGEND

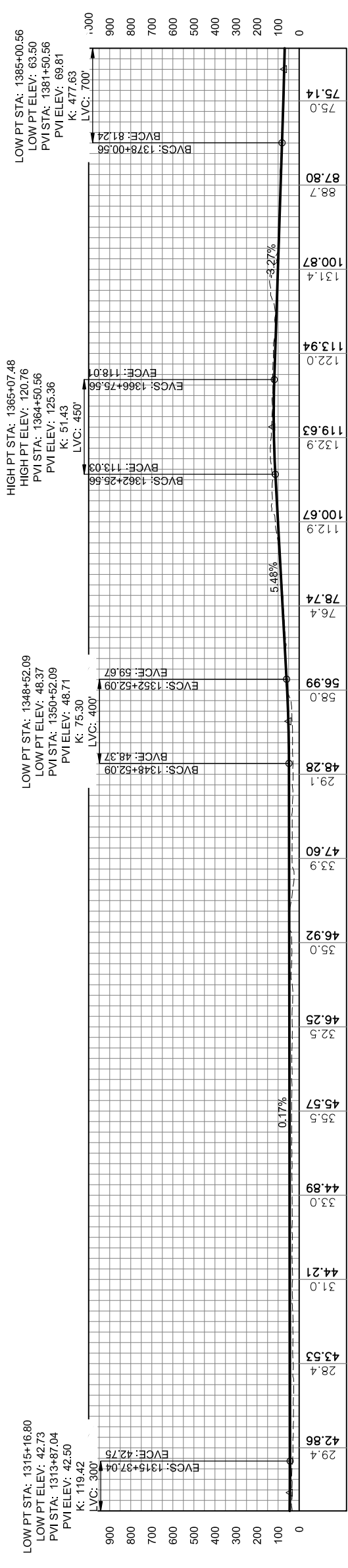
CHECKED BY:

**DRAFT**

DESIGNED BY:  
 DRAWN BY:

STATE OF ALASKA  
 DEPARTMENT OF TRANSPORTATION  
 & PUBLIC FACILITIES  
 SOUTHEAST REGION  
 JUNI-EAST LYNN CANAL  
 HIGHWAY ALTERNATIVE 2B  
 PROJECT #71100

2013 EIS  
 PLAN VIEW



PROFILE

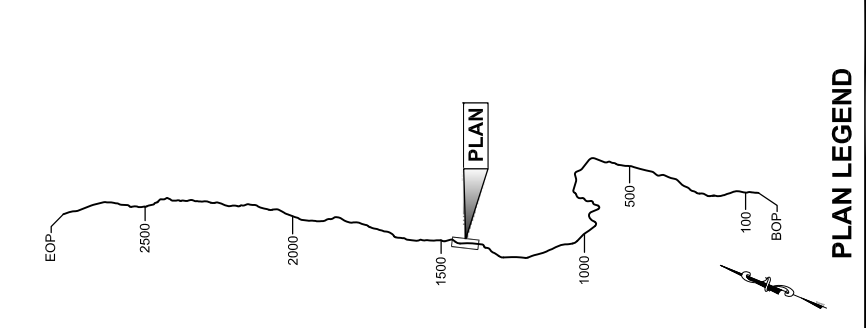
DO NOT SCALE FROM THESE DRAWINGS USE DIMENSIONS

*This page intentionally left blank.*

PATH: C:\UNITS\10\08\10-2013 EIS DWGSET\100\_2013 EIS  
 GEARY, NATE (DOT)  
 TAB: EL19.dwg, October 04, 2013 12:48:20 PM

RECORD OF REVISIONS		
NO.	DATE	DESCRIPTION

APPENDUM NUMBER  
 ATTACHMENT NUMBER



DESIGNED BY:  
 DRAWN BY:

STATE OF ALASKA  
 DEPARTMENT OF TRANSPORTATION  
 & PUBLIC FACILITIES  
 SOUTHEAST REGION

**JNU-EAST LYNN CANAL  
 HIGHWAY ALTERNATIVE 2B  
 PROJECT #71100**

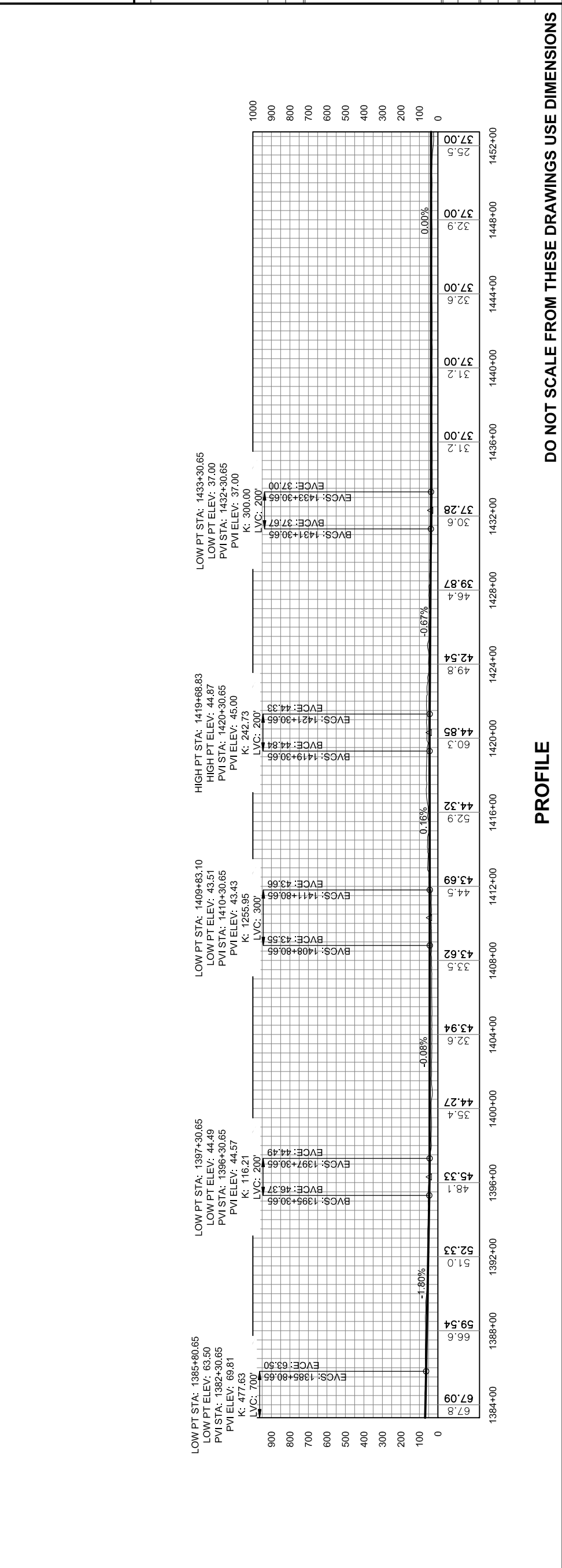
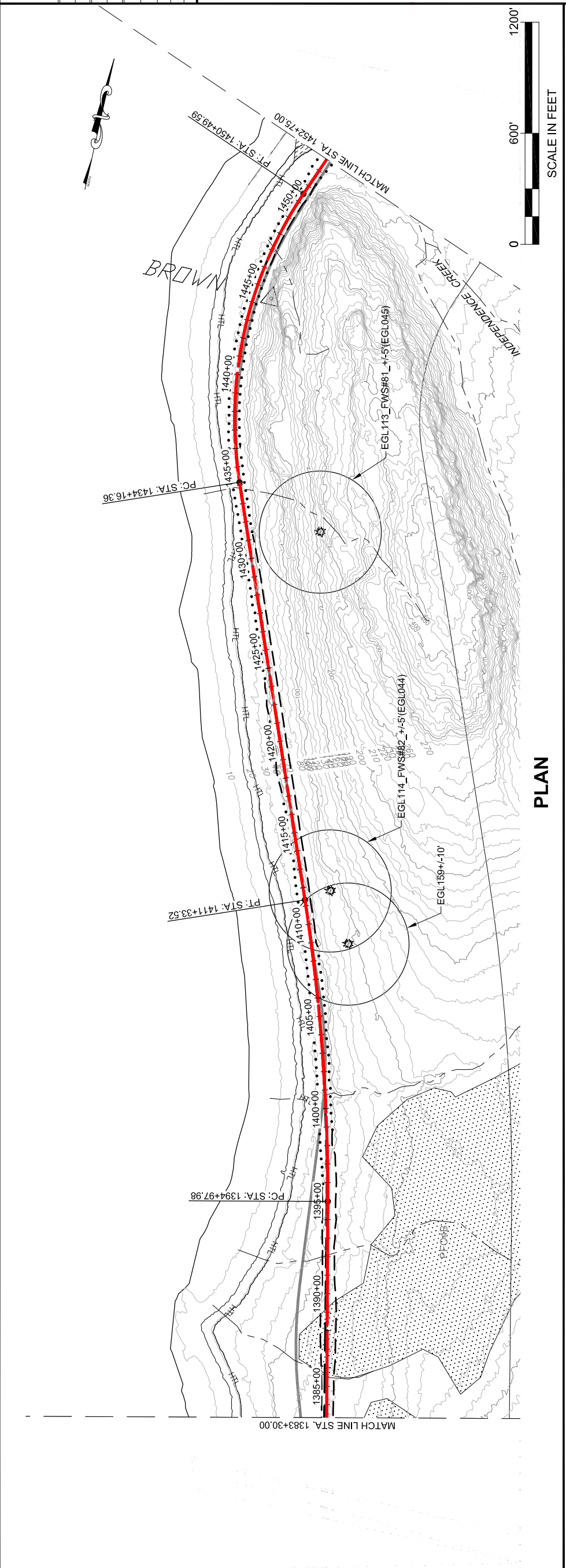
**2013 EIS  
 PLAN VIEW**

PROJECT DESIGNATION  
**71100**

STATE	YEAR
ALASKA	2013

SHEET NUMBER  
**EL19**

TOTAL SHEETS  
**38**



*This page intentionally left blank.*