

WIND DATA (ALL WEATHER)			
RUNWAY	10.5 KT	13 KT	16 KT
9-27	91.47	94.82	97.85
18-36	69.36	76.91	N/A
COMBINED	97.50	99.13	99.59

SOURCE: NOAA NATIONAL CLIMATE CENTER
STATION NUMBER: PAOT
PERIOD: 1/2006 - 12/2015

WIND DATA (IFR)			
RUNWAY	10.5 KT	13 KT	16 KT
9-27	91.73	94.84	97.34
18-36	53.40	61.58	N/A
COMBINED	96.29	98.57	99.24

SOURCE: NOAA NATIONAL CLIMATE CENTER
STATION NUMBER: PAOT
PERIOD: 1/2006 - 12/2015

DECLARED DISTANCES						
RUNWAY END ID	TORA	TODA	ASDA	LDA	APPROACH END RSA LENGTH	RSA LENGTH
EXISTING 9	6300'	6300'	6300'	5900'	400'	6700'
EXISTING 27	5,900'	5,900'	5,900'	5,900'	400'	6700'
EXISTING 9	SAME	SAME	SAME	SAME	SAME	SAME
EXISTING 27	SAME	SAME	SAME	SAME	SAME	SAME
ULTIMATE 9	SAME	SAME	SAME	SAME	SAME	SAME
ULTIMATE 27	SAME	SAME	SAME	SAME	SAME	SAME

NONSTANDARD CONDITIONS			
ITEM	STANDARD	EXISTING	ULTIMATE
RW 9-27			
S.A. WIDTH	500'	340'	340'*
S.A. LENGTH BEYOND THRESHOLD	1000'	400'	400'*
TW "E" ALIGNMENT	90 DEG.	43 DEG.	90 DEG.
RW 18-36			
S.A. LENGTH BEYOND THRESHOLD	300'	300'/240'	300'/300'
TW "F" ALIGNMENT	90 DEG.	4 DEG.	TO BE RELOCATED
TW "G" S.A. WIDTHS	79'	50'	79'
SEWAGE LAGOON SEPARATION FROM RW CL	10,000'	250'	250'
GENERAL AVIATION PARKING ROFA	NONE	YES	TO BE REMOVED
ACCESS ROAD IN ROFA	NONE	YES	TO REMAIN

* PER FAA RUNWAY SAFETY AREA DETERMINATION DATED 6/4/2012

MODIFICATIONS TO STANDARDS					
DESCRIPTION	STANDARD	EXISTING	ULTIMATE	AIRSPACE #	APPROVAL DATE
FULL LENGTH PARALLEL TAXIWAY	FULL LENGTH	PARTIAL LENGTH	PARTIAL LENGTH	2013-AL-16-NRA	3/15/2013

ITEM	RUNWAY 9 - 27		RUNWAY 18 - 36	
	EXISTING	ULTIMATE	EXISTING	ULTIMATE
FAR PART 77 APPROACH TYPE	PA	SAME	VISUAL	NPI UTILITY
IAP SURVEY REQUIRED	VERTICALLY GUIDED	SAME	NOT VERTICALLY GUIDED	SAME
RUNWAY SURFACE (TREATMENT)	ASPHALT (GROOVED)	SAME	GRAVEL	SAME
PAVEMENT CLASSIFICATION NUMBER	91/F/B/X/T	SAME	N/A	N/A
TOUCHDOWN ZONE ELEVATION (TDZE)	RUNWAY 09	13.2'	SAME	N/A
	RUNWAY 27	15.4'	SAME	N/A
	RUNWAY 18	N/A	N/A	11.4'
	RUNWAY 36	N/A	N/A	11.4'
EFFECTIVE GRADE	0.04%	SAME	0.01%	SAME
FAR PART 77 APPROACH SLOPE	50:1-9, 34:1-27	SAME	20:1	SAME
THRESHOLD SITING SURFACE (TSS) SLOPE	20:1	SAME	20:1	SAME
DEPARTURE SURFACE	40:1-9; N/A-27	SAME	N/A	SAME
RUNWAY DESIGN CODE (RDC)	C-III-4000	SAME	B-II-5000	SAME
RUNWAY REFERENCE CODE (RRC)	C-III-4000	SAME	B-II-5000	SAME
VISIBILITY MINIMUMS	≥ 3/4 MILE-9	SAME	≥ 1 MILE-18	SAME
	≥ 1 MILE-27	SAME	≥ 1 MILE-36	SAME
RUNWAY MARKING	PIR	SAME	NONE	SAME
RUNWAY LIGHTING	HIRL	SAME	MIRL	SAME
NAVIGATION APPROACH AIDS	REILs, PAPIs	SAME	NONE	SAME
RUNWAY DIMENSIONS	150'x6,300'	SAME	90'x3,876'	75'x3,876'
RUNWAY SAFETY AREA (RSA)				
-WIDTH	340'	SAME	120'	150'
-LENGTH BEYOND RUNWAY END	400'	SAME	240'	300'
RUNWAY OBJECT FREE AREA (ROFA)				
-WIDTH	800'	SAME	500'	SAME
-LENGTH BEYOND RUNWAY END	1,000'	SAME	300'	SAME
RUNWAY OBSTACLE FREE ZONE (ROFZ)				
-WIDTH	400'	SAME	250'	SAME
-LENGTH BEYOND RUNWAY END	200'	SAME	200'	SAME
RUNWAY PROTECTION ZONE (RPZ)				
RUNWAY 09	2,500'x1,000'x1,750'	SAME	N/A	N/A
RUNWAY 27	1,700'x1,510'x1,000'	SAME	N/A	N/A
RUNWAY 18	N/A	N/A	1,000'x450'x250'	SAME
RUNWAY 36	N/A	N/A	1,000'x450'x250'	SAME
PRECISION OBJECT FREE ZONE (POFZ)	200'x800'	SAME	NONE	NONE
TRUE BEARING	578°12'09"E	SAME	N13°36'26"E	SAME
GEODEIC POSITIONS (NAD 83)				
RW 9 END	LAT.	66°53'22.37"N	SAME	N/A
RW 9 END	LONG.	162°36'38.56"W	SAME	N/A
RW 9 DISPLACED THRESHOLD	LAT.	66°53'21.57"N	SAME	N/A
RW 9 DISPLACED THRESHOLD	LONG.	162°36'28.75"W	SAME	N/A
RW 27 END	LAT.	66°53'09.70"N	SAME	N/A
RW 27 END	LONG.	162°34'04.14"W	SAME	N/A
RW 18 END	LAT.	N/A	N/A	66°53'06.38"N
RW 18 END	LONG.	N/A	N/A	162°36'33.57"W
RW 36 END	LAT.	N/A	N/A	66°52'29.37"N
RW 36 END	LONG.	N/A	N/A	162°36'56.89"W

AIRPORT DATA		
ITEM	EXISTING	ULTIMATE
NATIONAL AIRPORT IDENTIFIER	OTZ	SAME
AIRPORT IDENTIFIER ICAO/U.S.	PAOT	SAME
AIRPORT ELEVATION (NAVD88)	15.4'	SAME
AIRPORT REFERENCE POINT (ARP) - NAD 83	66°53'05"N 162°35'53"W	SAME
MEAN MAX. TEMPERATURE, HOTTEST MONTH (JULY)	59° F	SAME
AIRPORT AND TERMINAL NAVIGATION AIDS	ILS/LOC/DME, GPS, NDB, VOR, RVR, BEACON	SAME
AIRPORT REFERENCE CODE (ARC)	C-II	SAME
AIRPORT LIGHTING	BEACON	SAME
TAXIWAY LIGHTING	MIL	SAME
MAGNETIC DECLINATION, 2015, CHANGING 0°23"W/YR (NOAA)	12°23'E	N/A
OBSTRUCTION SURVEY SOURCE AND TYPE	VERTICALLY GUIDED AIRSPACE ANALYSIS SURVEY 2011-2012, 2015	N/A
NPIAS SERVICE LEVEL	PRIMARY	SAME
STATE SERVICE ROLE	REGIONAL HUB	SAME

AIRPORT SURVEY CONTROL				
MONUMENT	LATITUDE	LONGITUDE	ELEVATION	DESCRIPTION
(PACS) KOTZ 2006 PID: D13735	66°53'27.30"N	162°36'29.54"W	10.09'	9/16" X 12" SS ROD W/ GREASED SLEEVE IN MONUMENT CASE W/ CONCRETE COLLAR
(SACS) OTZ A PID: D13734	66°53'18.91"N	162°36'36.40"W	12.84'	3 1/4" BRASS CAP MONUMENT ON 2 1/2" X 30" SS POST, 0.3" BELOW GROUND
(SACS) OTZ B PID: D13736	66°53'21.16"N	162°35'45.03"W	10.23'	3 1/4" BRASS CAP MONUMENT ON 2 1/2" X 30" SS POST, 0.3" BELOW GROUND

LATITUDE AND LONGITUDES BASED ON NAD 83. ELEVATIONS BASED ON NAVD 88.

DESIGN SLM
DRAWN SLM
CHECKED JJH

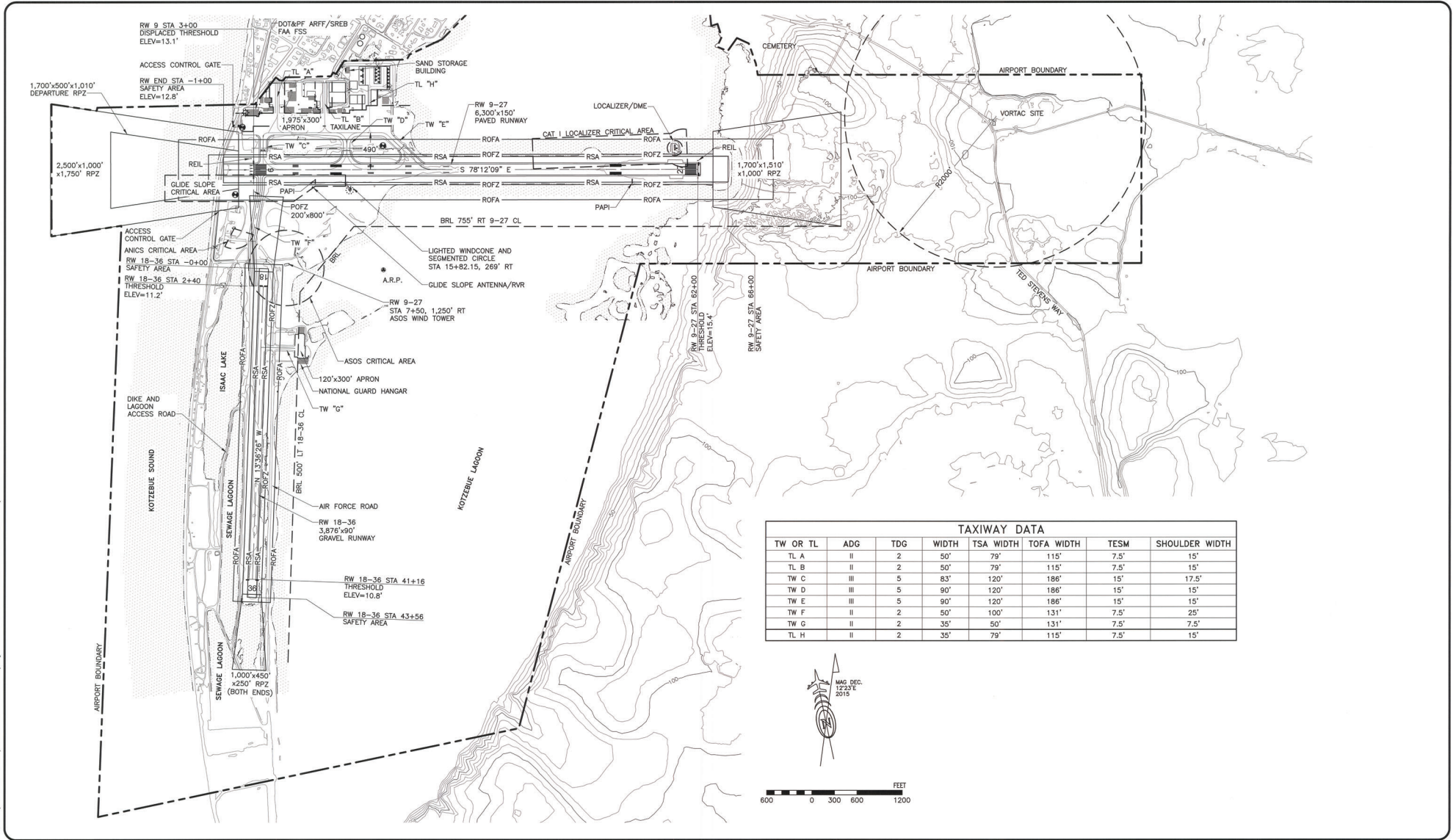
STATE OF ALASKA
DEPARTMENT OF TRANSPORTATION AND PUBLIC FACILITIES
NORTHERN REGION-AVIATION

APPROVED: *Albert M.L. Beck* DATE: 11/6/18
ALBERT M.L. BECK, P.E. PROJECT DELIVERY LEAD

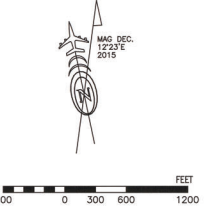
SCH	DATE	NO.	REVISIONS	FAA
SCH	3/18/13		UPDATE	
JGL	1/7/16		AS-BUILT	
KAR	11/18/16		UPDATE	

BY	DATE	NO.	REVISIONS	FAA

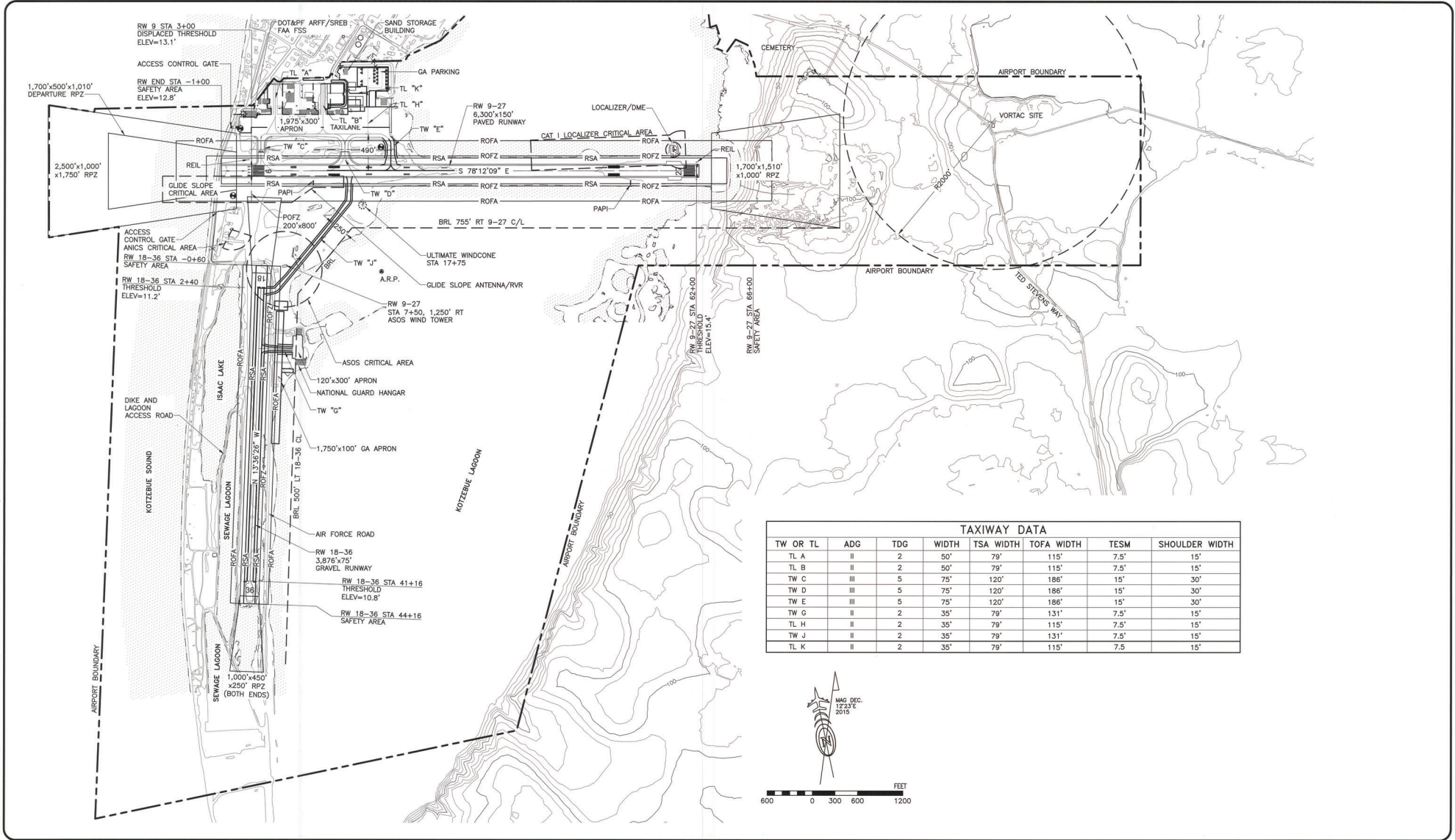
RALPH WIEN MEMORIAL AIRPORT
KOTZBUE, ALASKA
AIRPORT DATA SHEET



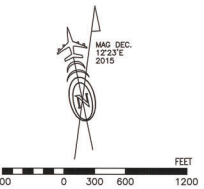
TAXIWAY DATA							
TW OR TL	ADG	TDG	WIDTH	TSA WIDTH	TOFA WIDTH	TESM	SHOULDER WIDTH
TL A	II	2	50'	79'	115'	7.5'	15'
TL B	II	2	50'	79'	115'	7.5'	15'
TW C	III	5	83'	120'	186'	15'	17.5'
TW D	III	5	90'	120'	186'	15'	15'
TW E	III	5	90'	120'	186'	15'	15'
TW F	II	2	50'	100'	131'	7.5'	25'
TW G	II	2	35'	50'	131'	7.5'	7.5'
TL H	II	2	35'	79'	115'	7.5'	15'



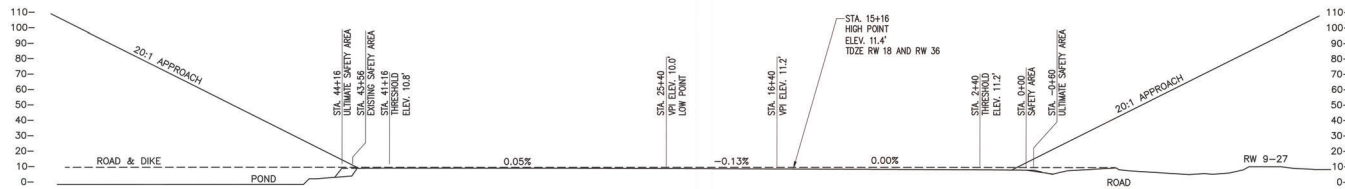
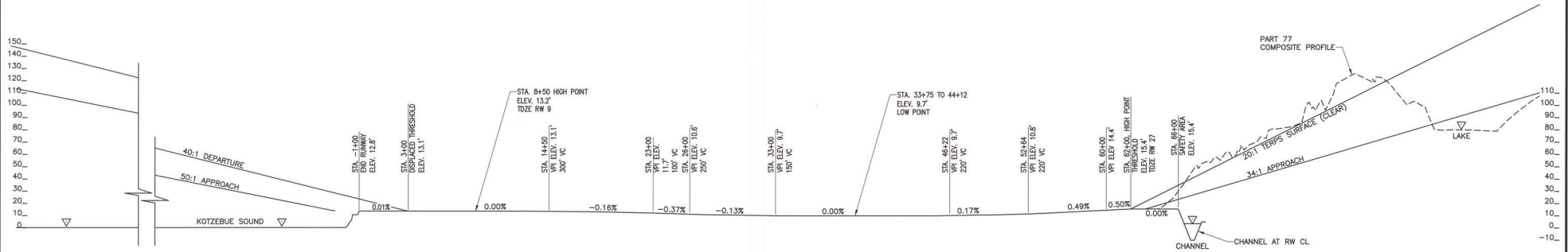
DESIGN <u>SLM</u> DRAWN <u>SLM</u> CHECKED <u>JJH</u>	STATE OF ALASKA DEPARTMENT OF TRANSPORTATION AND PUBLIC FACILITIES NORTHERN REGION-AVIATION APPROVED: <u>Albert M.L. Beck</u> DATE <u>11/6/18</u> ALBERT M.L. BECK, P.E. PROJECT DELIVERY LEAD	SCH 3/18/13 UPDATE JCL 1/7/16 AS-BUILT KAR 11/18/16 UPDATE SLM 6/26/18 AS-BUILT	BY DATE NO. REVISIONS FAA	BY DATE NO. REVISIONS FAA	RALPH WIEN MEMORIAL AIRPORT KOTZEBUE, ALASKA AIRPORT LAYOUT - EXISTING	SHEET 3 OF 15
---	---	--	---------------------------	---------------------------	---	--------------------------------------



TAXIWAY DATA							
TW OR TL	ADG	TDG	WIDTH	TSA WIDTH	TOFA WIDTH	TESM	SHOULDER WIDTH
TL A	II	2	50'	79'	115'	7.5'	15'
TL B	II	2	50'	79'	115'	7.5'	15'
TW C	III	5	75'	120'	186'	15'	30'
TW D	III	5	75'	120'	186'	15'	30'
TW E	III	5	75'	120'	186'	15'	30'
TW G	II	2	35'	79'	131'	7.5'	15'
TL H	II	2	35'	79'	115'	7.5'	15'
TW J	II	2	35'	79'	131'	7.5'	15'
TL K	II	2	35'	79'	115'	7.5'	15'



DESIGN <u>SLM</u> DRAWN <u>SLM</u> CHECKED <u>JJH</u>	STATE OF ALASKA DEPARTMENT OF TRANSPORTATION AND PUBLIC FACILITIES NORTHERN REGION-AVIATION APPROVED: <i>Albert M.L. Beck</i> DATE <u>11/6/18</u> ALBERT M.L. BECK, P.E. PROJECT DELIVERY LEAD	SCH 3/18/13 UPDATE JGL 1/7/16 AS-BUILT KAR 11/18/16 UPDATE SLM 6/26/18 AS-BUILT BY DATE NO. REVISIONS FAA	BY DATE NO. REVISIONS FAA	RALPH WIEN MEMORIAL AIRPORT KOTZEBUE, ALASKA AIRPORT LAYOUT - ULTIMATE	SHEET 4 OF 15
---	---	---	---------------------------	---	------------------



NOTES:

- AIRPORT ELEVATION IS 15.4'.
- FOR CLOSE-IN OBSTRUCTIONS, SEE INNER PORTION OF THE APPROACH SURFACE DRAWINGS.

DESIGN SLM
DRAWN SLM
CHECKED JJH

STATE OF ALASKA
DEPARTMENT OF TRANSPORTATION AND PUBLIC FACILITIES
NORTHERN REGION-AVIATION

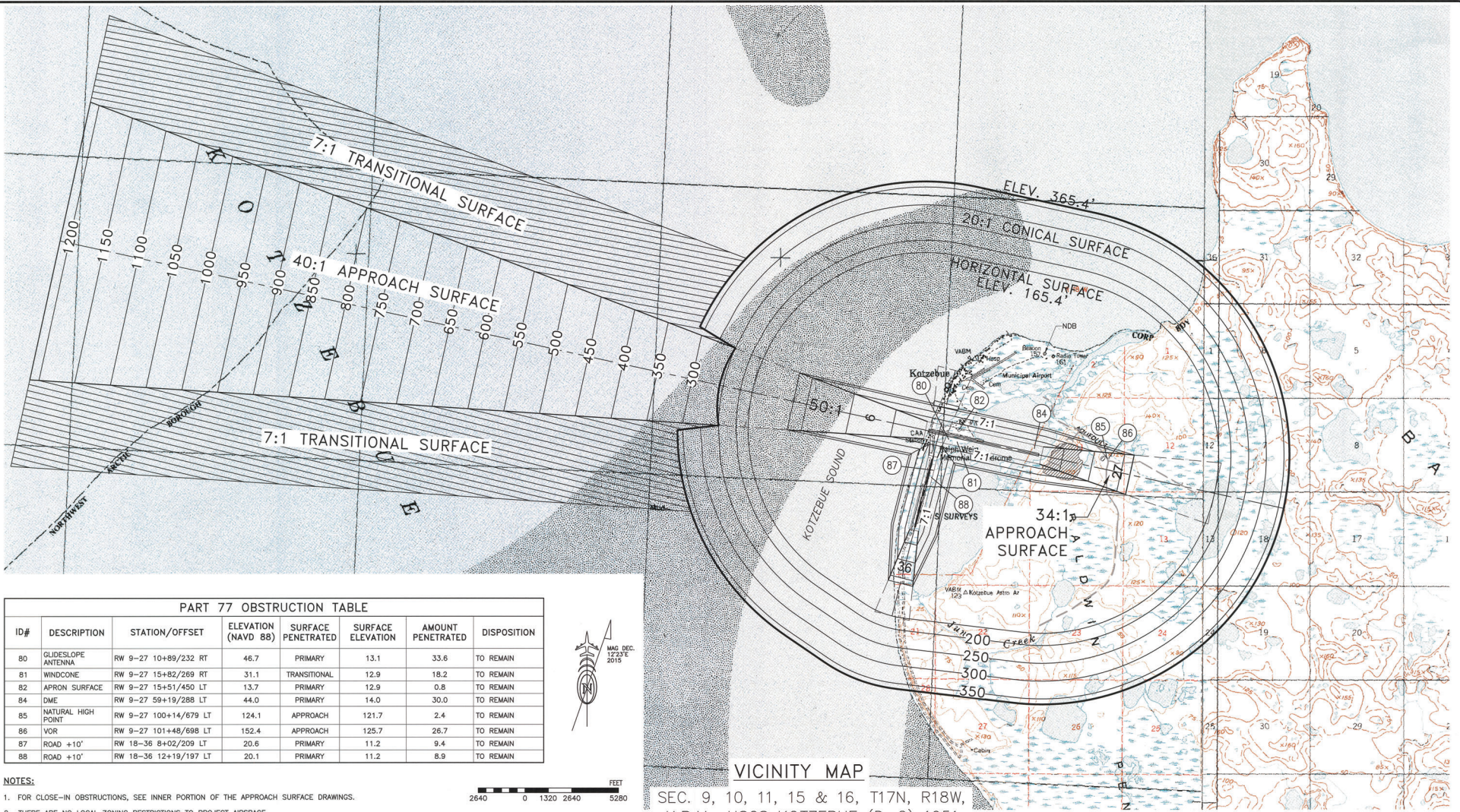
APPROVED: *Albert M.L. Beck* DATE 11/6/18
ALBERT M.L. BECK, P.E. PROJECT DELIVERY LEAD

BY	DATE	NO.	REVISIONS	FAA
SCH	3/18/13		UPDATE	
JGL	1/7/16		AS-BUILT	
KAR	11/18/16		UPDATE	

BY	DATE	NO.	REVISIONS	FAA

RALPH WIEN MEMORIAL AIRPORT
KOTZEBUE, ALASKA
ULTIMATE & EXISTING APPROACH PROFILES
18-36 & 9-27

SHEET 5 OF 15



PART 77 OBSTRUCTION TABLE							
ID#	DESCRIPTION	STATION/OFFSET	ELEVATION (NAVD 88)	SURFACE PENETRATED	SURFACE ELEVATION	AMOUNT PENETRATED	DISPOSITION
80	GLIDESLOPE ANTENNA	RW 9-27 10+89/232 RT	46.7	PRIMARY	13.1	33.6	TO REMAIN
81	WINDCONE	RW 9-27 15+82/269 RT	31.1	TRANSITIONAL	12.9	18.2	TO REMAIN
82	APRON SURFACE	RW 9-27 15+51/450 LT	13.7	PRIMARY	12.9	0.8	TO REMAIN
84	DME	RW 9-27 59+19/288 LT	44.0	PRIMARY	14.0	30.0	TO REMAIN
85	NATURAL HIGH POINT	RW 9-27 100+14/679 LT	124.1	APPROACH	121.7	2.4	TO REMAIN
86	VOR	RW 9-27 101+48/698 LT	152.4	APPROACH	125.7	26.7	TO REMAIN
87	ROAD +10'	RW 18-36 8+02/209 LT	20.6	PRIMARY	11.2	9.4	TO REMAIN
88	ROAD +10'	RW 18-36 12+19/197 LT	20.1	PRIMARY	11.2	8.9	TO REMAIN

NOTES:

- FOR CLOSE-IN OBSTRUCTIONS, SEE INNER PORTION OF THE APPROACH SURFACE DRAWINGS.
- THERE ARE NO LOCAL ZONING RESTRICTIONS TO PROJECT AIRSPACE.
- OBSTRUCTIONS PROVIDED IN THE AERONAUTICAL SURVEY, UPDATED IN 2015, WERE REVIEWED FOR PART 77 AIRSPACE CLEARANCE. WHERE MULTIPLE OBSTRUCTIONS OF THE SAME TYPE WERE FOUND IN CLOSE PROXIMITY, A REPRESENTATIVE POINT WITH THE GREATEST PENETRATION WAS INCLUDED IN THE OBSTRUCTION TABLE TO REPRESENT THE CLUSTER OF SIMILAR OBSTRUCTIONS.



VICINITY MAP
 SEC. 9, 10, 11, 15 & 16, T17N, R18W,
 K.R.M., USGS KOTZEBUE (D-2) 1951

DESIGN SLM

DRAWN SLM

CHECKED JJH

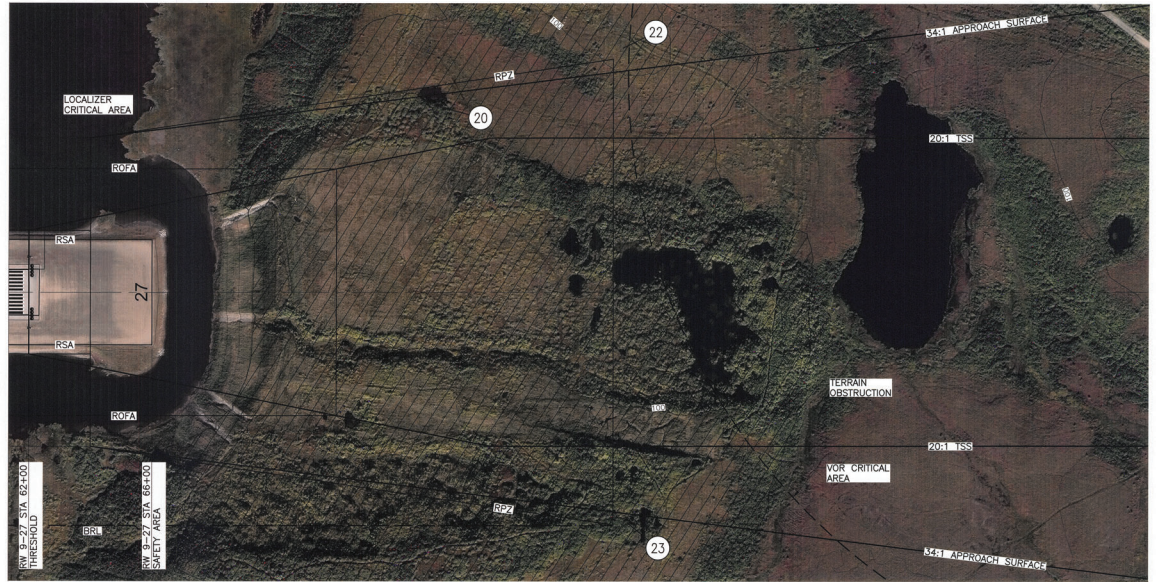
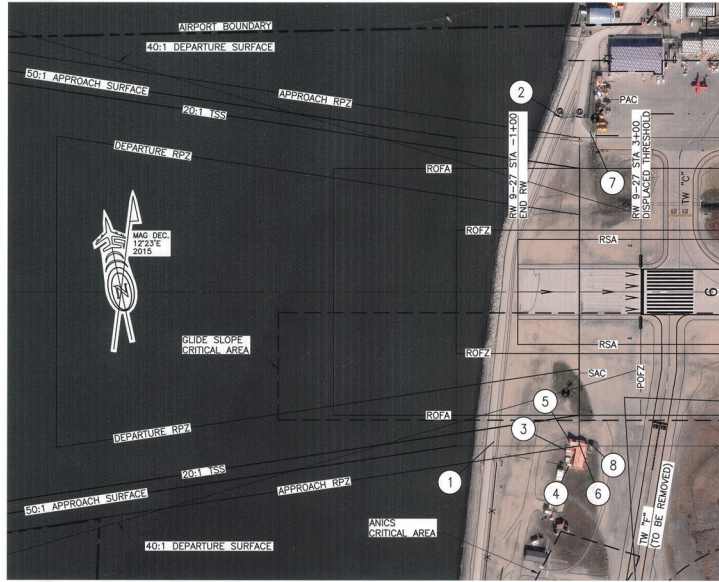
STATE OF ALASKA
 DEPARTMENT OF TRANSPORTATION AND PUBLIC FACILITIES
 NORTHERN REGION-AVIATION

APPROVED: Albert M.L. Beck DATE 11/6/18
 ALBERT M.L. BECK, P.E. PROJECT DELIVERY LEAD

BY	DATE	NO.	REVISIONS	FAA
SCH	3/18/13		UPDATE	
JUL	1/7/16		AS-BUILT	
KAR	11/18/16		UPDATE	

BY	DATE	NO.	REVISIONS	FAA

RALPH WIEN MEMORIAL AIRPORT
 KOTZEBUE, ALASKA
 AIRPORT AIRSPACE - PLAN

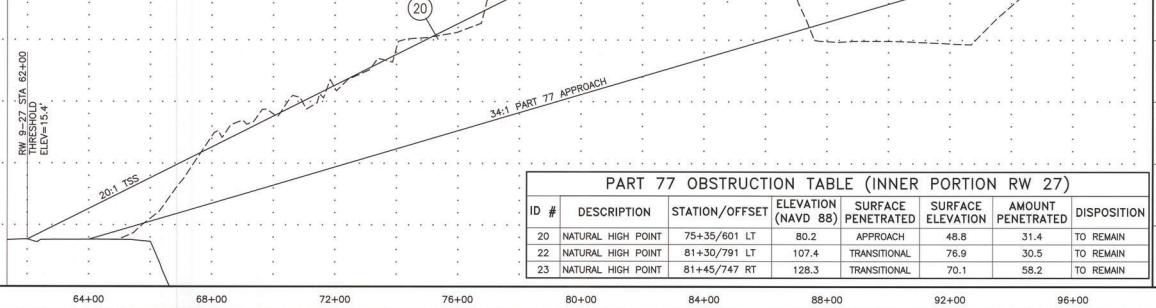
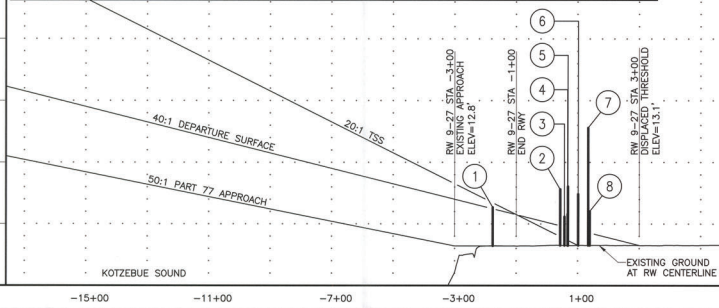


PART 77 OBSTRUCTION TABLE (INNER PORTION RW 9)

ID #	DESCRIPTION	STATION/OFFSET	ELEVATION (NAVD 88)	SURFACE PENETRATED	SURFACE ELEVATION	AMOUNT PENETRATED	DISPOSITION
1	ROAD + 15'	-1+77/486 RT	25.4	PRIMARY	12.8	12.6	TO REMAIN
2	STREET CROSSING ARM UP POSITION	0+43/565 LT	31.3	TRANSITIONAL	22.2	9.1	TO REMAIN
3	BUILDING	0+56/514 RT	22.4	TRANSITIONAL	14.9	7.5	TO BE REMOVED
4	BUILDING	0+66/566 RT	23.2	TRANSITIONAL	22.4	0.8	TO BE REMOVED
5	BUILDING	0+67/482 RT	32.2	PRIMARY	12.9	19.3	TO BE REMOVED
6	BUILDING	1+01/494 RT	29.7	PRIMARY	13.0	16.7	TO BE REMOVED
7	STREET CROSSING ARM UP POSITION	1+34/519 LT	51.2	TRANSITIONAL	15.7	35.5	TO REMAIN
8	BUILDING	1+38/494 RT	24.1	PRIMARY	13.0	11.1	TO BE REMOVED

NOTES:

1. RW 9 TSS DIMENSIONS 800'x3,800'x10,000' (TYPE 6, TABLE 3-2, AC 150/5300-13A).
2. RW 27 TSS DIMENSIONS 400'x1,000'x8,500' (TYPE 3, TABLE 3-2, AC 150/5300-13A).
3. RW 9 PART 77 APPROACH SURFACE IS ENTIRELY OVER THE OCEAN; THERE ARE NO OBSTRUCTIONS.
4. ROAD OBSTRUCTIONS INCLUDE HEIGHT OF VEHICLES.
5. OBSTRUCTIONS PROVIDED IN THE AERONAUTICAL SURVEY, UPDATED IN 2015, WERE REVIEWED FOR PART 77 AIRSPACE CLEARANCE. WHERE MULTIPLE OBSTRUCTIONS OF THE SAME TYPE WERE FOUND IN CLOSE PROXIMITY, A REPRESENTATIVE POINT WITH THE GREATEST PENETRATION WAS INCLUDED IN THE OBSTRUCTION TABLE TO REPRESENT THE CLUSTER OF SIMILAR OBSTRUCTIONS.



PART 77 OBSTRUCTION TABLE (INNER PORTION RW 27)

ID #	DESCRIPTION	STATION/OFFSET	ELEVATION (NAVD 88)	SURFACE PENETRATED	SURFACE ELEVATION	AMOUNT PENETRATED	DISPOSITION
20	NATURAL HIGH POINT	75+35/601 LT	80.2	APPROACH	48.8	31.4	TO REMAIN
22	NATURAL HIGH POINT	81+30/791 LT	107.4	TRANSITIONAL	76.9	30.5	TO REMAIN
23	NATURAL HIGH POINT	81+45/747 RT	128.3	TRANSITIONAL	70.1	58.2	TO REMAIN

DESIGN SLM
DRAWN SLM
CHECKED JJH

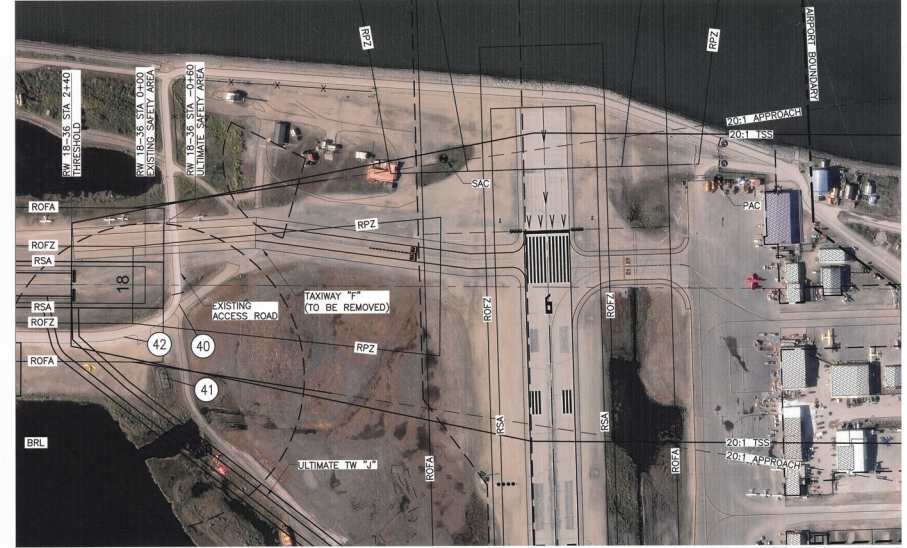
STATE OF ALASKA
DEPARTMENT OF TRANSPORTATION AND PUBLIC FACILITIES
NORTHERN REGION-AVIATION
APPROVED: *Albert M.L. Beck* DATE *11/6/18*
ALBERT M.L. BECK, P.E. PROJECT DELIVERY LEAD

BY	DATE	NO.	REVISIONS	FAA
SCH	3/18/13		UPDATE	
JGL	1/7/16		AS-BUILT	
KAR	11/18/16		UPDATE	

BY	DATE	NO.	REVISIONS	FAA

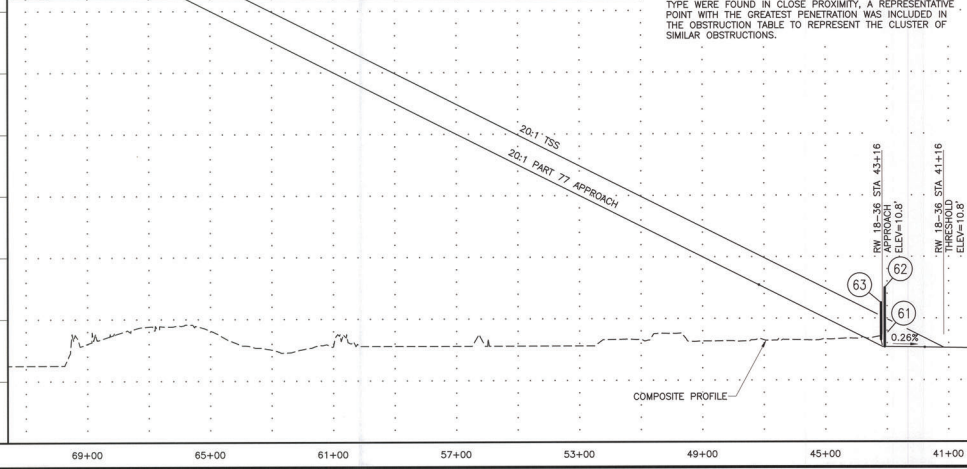
RALPH WIEN MEMORIAL AIRPORT
KOTZEBUE, ALASKA
EXISTING & ULTIMATE INNER PORTION
OF APPROACH SURFACE 9-27

SHEET
7 OF
15

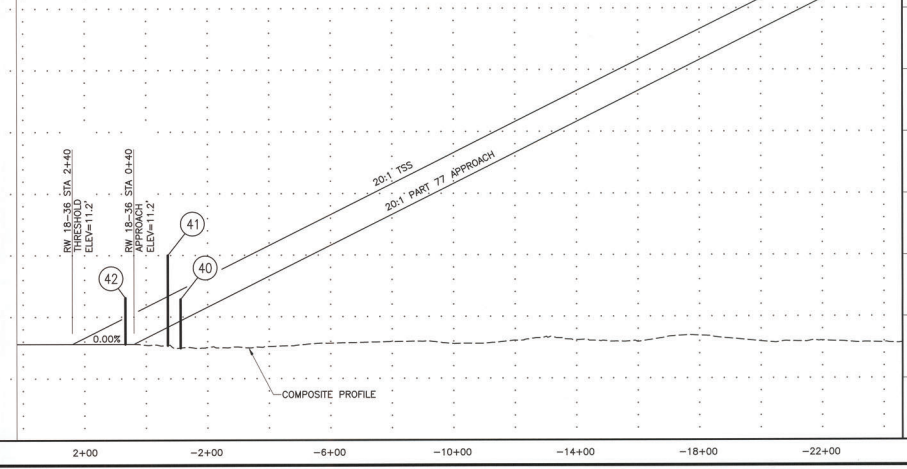


ID #	DESCRIPTION	STATION/OFFSET	ELEVATION (NAVD 88)	SURFACE PENETRATED	SURFACE ELEVATION	AMOUNT PENETRATED	DISPOSITION
61	NATURAL HIGH POINT	42+97/161 RT	15.5	PRIMARY	10.8	4.7	TO REMAIN
62	ROAD +15'	43+07/167 RT	29.9	PRIMARY	10.8	19.1	TO REMAIN
63	ROAD +15'	43+16/190 LT	25.0	PRIMARY	10.8	14.2	TO REMAIN

- NOTES:**
1. RUNWAY 18-36 TSS DIMENSIONS: 400'x1,000'x1,500'x8,500' (TYPE 3, TABLE 3-2, AC 150/5300-13A).
 2. ROAD OBSTRUCTIONS INCLUDE HEIGHT OF VEHICLES.
 3. OBSTRUCTIONS PROVIDED IN THE AERONAUTICAL SURVEY, UPDATED IN 2015, WERE REVIEWED FOR PART 77 AIRSPACE CLEARANCE. WHERE MULTIPLE OBSTRUCTIONS OF THE SAME TYPE WERE FOUND IN CLOSE PROXIMITY, A REPRESENTATIVE POINT WITH THE GREATEST PENETRATION WAS INCLUDED IN THE OBSTRUCTION TABLE TO REPRESENT THE CLUSTER OF SIMILAR OBSTRUCTIONS.



ID#	DESCRIPTION	STATION/OFFSET	ELEVATION (NAVD 88)	SURFACE PENETRATED	SURFACE ELEVATION	AMOUNT PENETRATED	DISPOSITION
40	ROAD +15'	-1+11/62 LT	25.7	APPROACH	19.0	6.7	TO REMAIN
41	ASOS	-0+72/303 LT	40.0	TRANSITIONAL	22.0	18.0	TO REMAIN
42	ROAD +15'	0+67/169 LT	26.2	PRIMARY	11.2	15.0	TO REMAIN



DESIGN SLM
DRAWN SLM
CHECKED JJH

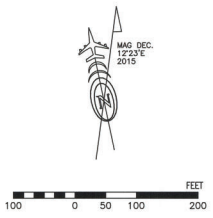
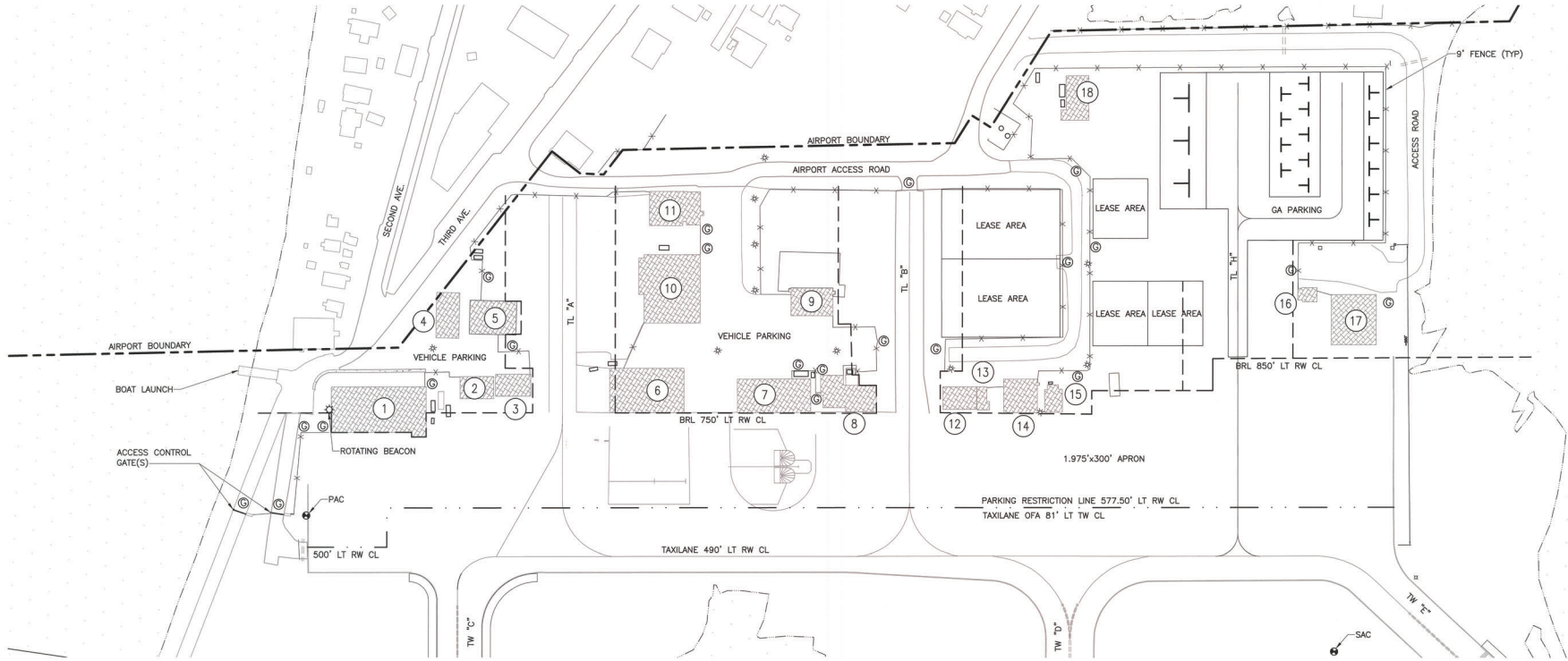
STATE OF ALASKA
DEPARTMENT OF TRANSPORTATION AND PUBLIC FACILITIES
NORTHERN REGION-AVIATION

APPROVED: *Albert M. Beck* DATE: *11/6/18*
ALBERT M.L. BECK, P.E. PROJECT DELIVERY LEAD

BY	DATE	NO.	REVISIONS	FAA
SCH	3/18/13		UPDATE	
JGL	1/7/16		AS-BUILT	
KAR	11/18/16		UPDATE	

BY	DATE	NO.	REVISIONS	FAA

RALPH WIEN MEMORIAL AIRPORT
KOTZEBUE, ALASKA
EXISTING & ULTIMATE INNER PORTION
OF APPROACH SURFACE 18-36



BUILDING DATA TABLE					
#	STRUCTURE NAME	TOP ELEV (NAVD 88)	OBSTRUCTION MARKING (Y/N)		REMARKS
			EXISTING	ULTIMATE	
1	DOT ARFF/SREB	35.2	N	N	
2	OFFICE	25.9	N	N	
3	TERMINAL	32.5	N	N	
4	DOT STORAGE	30.7	N	N	
5	OFFICE	31.4	N	N	
6	HANGAR/TERMINAL	30.5	N	N	
7	TERMINAL	28.2	N	N	
8	HANGAR/TERMINAL	23.3	N	N	
9	TERMINAL	29.1	N	N	
10	HANGAR/TERMINAL	33.6	N	N	
11	HANGAR/TERMINAL	26.2	N	N	
12	HANGAR/TERMINAL	24.1	N	N	
13	HANGAR/TERMINAL	36.8	N	N	
14	OFFICE/TERMINAL	30.2	N	N	
15	STORAGE	28.4	N	N	
16	OFFICE	29.3	N	N	

BUILDINGS DO NOT PENETRATE TRANSITIONAL SURFACE

BUILDING DATA TABLE					
#	STRUCTURE NAME	TOP ELEV (NAVD 88)	OBSTRUCTION MARKING (Y/N)		REMARKS
			EXISTING	ULTIMATE	
17	OFFICE/HANGAR	35.9	N	N	
18	SAND STORAGE BLDG	36.5	N	N	

BUILDINGS DO NOT PENETRATE TRANSITIONAL SURFACE

DESIGN SLM
DRAWN SLM
CHECKED JJH

STATE OF ALASKA
DEPARTMENT OF TRANSPORTATION AND PUBLIC FACILITIES
NORTHERN REGION-AVIATION

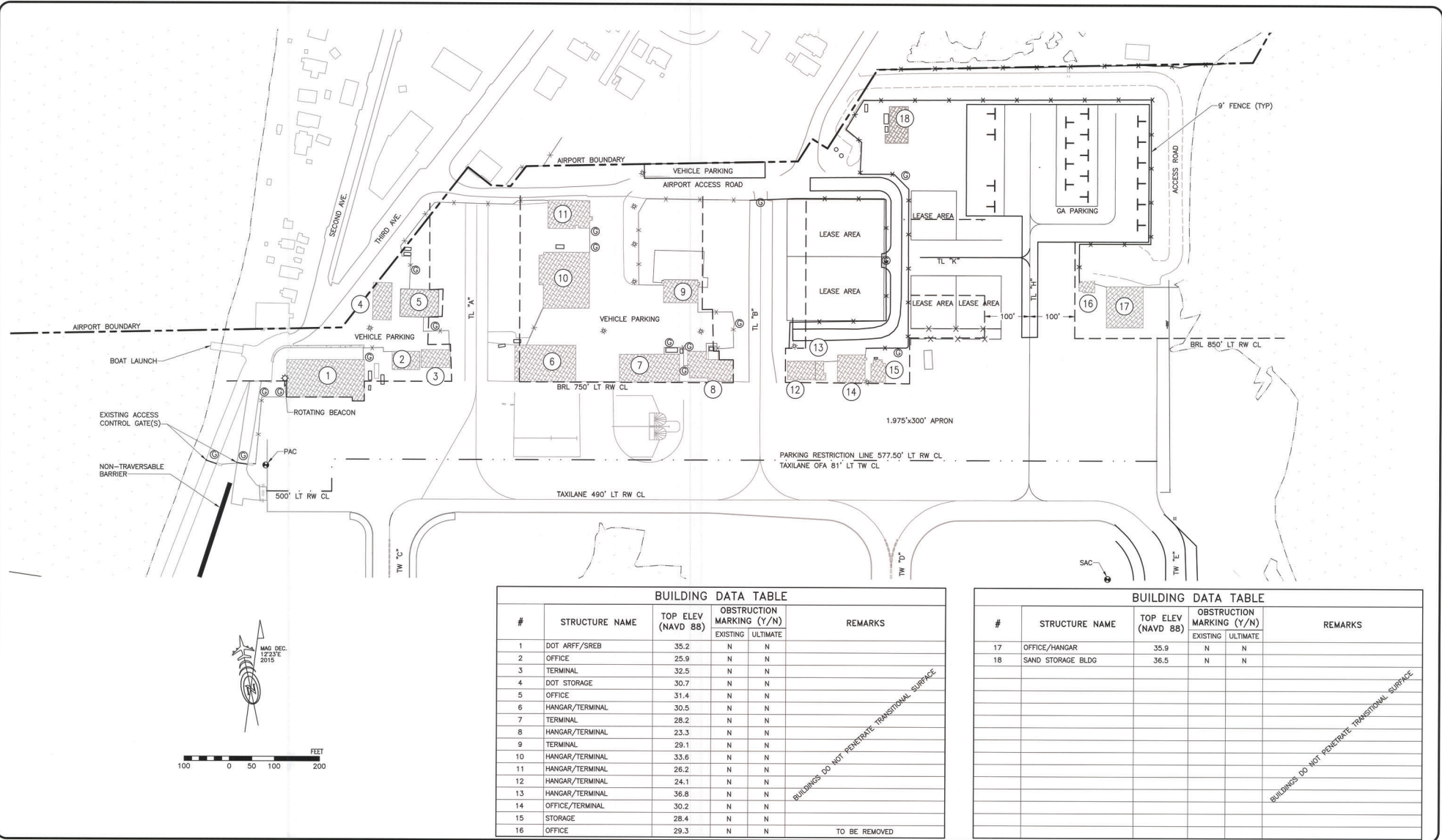
APPROVED: *Albert M. Beck* DATE *11/6/18*
ALBERT M.L. BECK, P.E. PROJECT DELIVERY LEAD

BY	DATE	NO.	REVISIONS	FAA
SCH	3/18/13		UPDATE	
JGL	1/7/16		AS-BUILT	
KAR	11/18/16		UPDATE	
JGL	6/26/18		AS-BUILT	

BY	DATE	NO.	REVISIONS	FAA

RALPH WIEN MEMORIAL AIRPORT
KOTZEBUE, ALASKA
RW 9-27 TERMINAL PLAN
EXISTING LAYOUT

SHEET
9 OF
15



BUILDING DATA TABLE					
#	STRUCTURE NAME	TOP ELEV (NAVD 88)	OBSTRUCTION MARKING (Y/N)		REMARKS
			EXISTING	ULTIMATE	
1	DOT ARFF/SREB	35.2	N	N	
2	OFFICE	25.9	N	N	
3	TERMINAL	32.5	N	N	
4	DOT STORAGE	30.7	N	N	
5	OFFICE	31.4	N	N	
6	HANGAR/TERMINAL	30.5	N	N	
7	TERMINAL	28.2	N	N	
8	HANGAR/TERMINAL	23.3	N	N	
9	TERMINAL	29.1	N	N	
10	HANGAR/TERMINAL	33.6	N	N	
11	HANGAR/TERMINAL	26.2	N	N	
12	HANGAR/TERMINAL	24.1	N	N	
13	HANGAR/TERMINAL	36.8	N	N	
14	OFFICE/TERMINAL	30.2	N	N	
15	STORAGE	28.4	N	N	
16	OFFICE	29.3	N	N	TO BE REMOVED

BUILDING DATA TABLE					
#	STRUCTURE NAME	TOP ELEV (NAVD 88)	OBSTRUCTION MARKING (Y/N)		REMARKS
			EXISTING	ULTIMATE	
17	OFFICE/HANGAR	35.9	N	N	
18	SAND STORAGE BLDG	36.5	N	N	

DESIGN SLM
DRAWN SLM
CHECKED JJH

STATE OF ALASKA
DEPARTMENT OF TRANSPORTATION AND PUBLIC FACILITIES
NORTHERN REGION-AVIATION

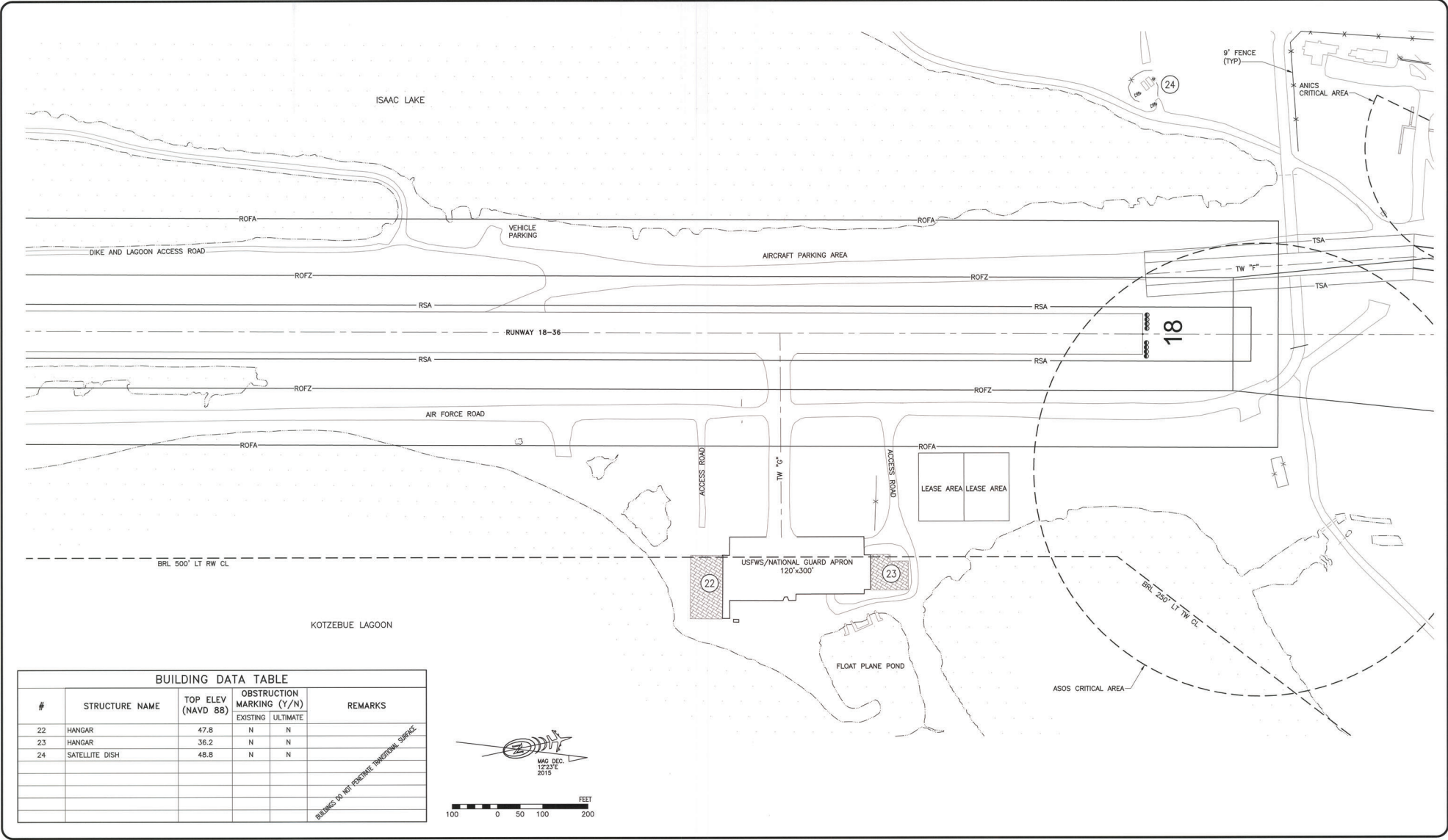
APPROVED: *Albert M.L. Beck* DATE *11/6/18*
ALBERT M.L. BECK, P.E. PROJECT DELIVERY LEAD

BY	DATE	NO.	REVISIONS	FAA
SCH	3/18/13		UPDATE	
JGL	1/7/16		AS-BUILT	
KAR	11/18/16		UPDATE	
SLM	6/26/18		AS-BUILT	

BY	DATE	NO.	REVISIONS	FAA

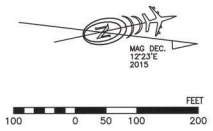
RALPH WIEN MEMORIAL AIRPORT
KOTZEBUE, ALASKA
RW 9-27 TERMINAL PLAN
ULTIMATE LAYOUT

SHEET 10 OF 15



BUILDING DATA TABLE					
#	STRUCTURE NAME	TOP ELEV (NAVD 88)	OBSTRUCTION MARKING (Y/N)		REMARKS
			EXISTING	ULTIMATE	
22	HANGAR	47.8	N	N	
23	HANGAR	36.2	N	N	
24	SATELLITE DISH	48.8	N	N	

BOUNDARIES DO NOT REPRESENT TERRITORIAL SOURCE



DESIGN SLM
DRAWN SLM
CHECKED JJH

STATE OF ALASKA
DEPARTMENT OF TRANSPORTATION AND PUBLIC FACILITIES
NORTHERN REGION-AVIATION

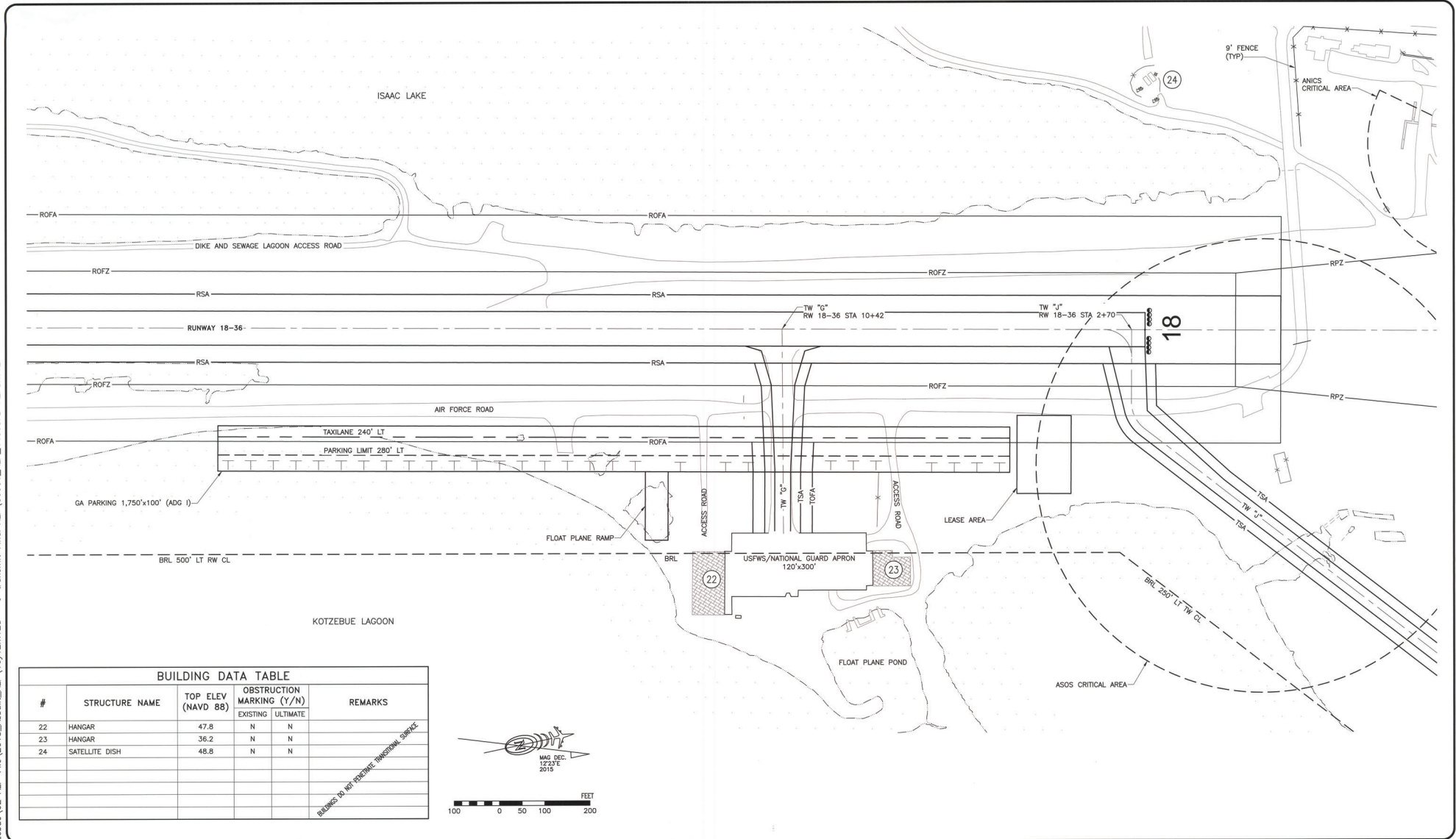
APPROVED: *Albert M.L. Beck* DATE *11/6/18*
ALBERT M.L. BECK, P.E. PROJECT DELIVERY LEAD

BY	DATE	NO.	REVISIONS	FAA
SCH	3/18/13		UPDATE	
JGL	1/7/16		AS-BUILT	
KAR	11/18/16		UPDATE	
SLM	6/26/18		AS-BUILT	

BY	DATE	NO.	REVISIONS	FAA

RALPH WIEN MEMORIAL AIRPORT
KOTZEBUE, ALASKA
RW 18-36 TERMINAL PLAN
EXISTING LAYOUT

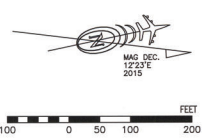
SHEET
11 OF
15



BUILDING DATA TABLE

#	STRUCTURE NAME	TOP ELEV (NAVD 88)	OBSTRUCTION MARKING (Y/N)		REMARKS
			EXISTING	ULTIMATE	
22	HANGAR	47.8	N	N	
23	HANGAR	36.2	N	N	
24	SATELLITE DISH	48.8	N	N	

BUILDINGS DO NOT PERMITTE INSURANCE SERVICE



DESIGN	SLM
DRAWN	SLM
CHECKED	JWH

STATE OF ALASKA
DEPARTMENT OF TRANSPORTATION AND PUBLIC FACILITIES
NORTHERN REGION-AVIATION

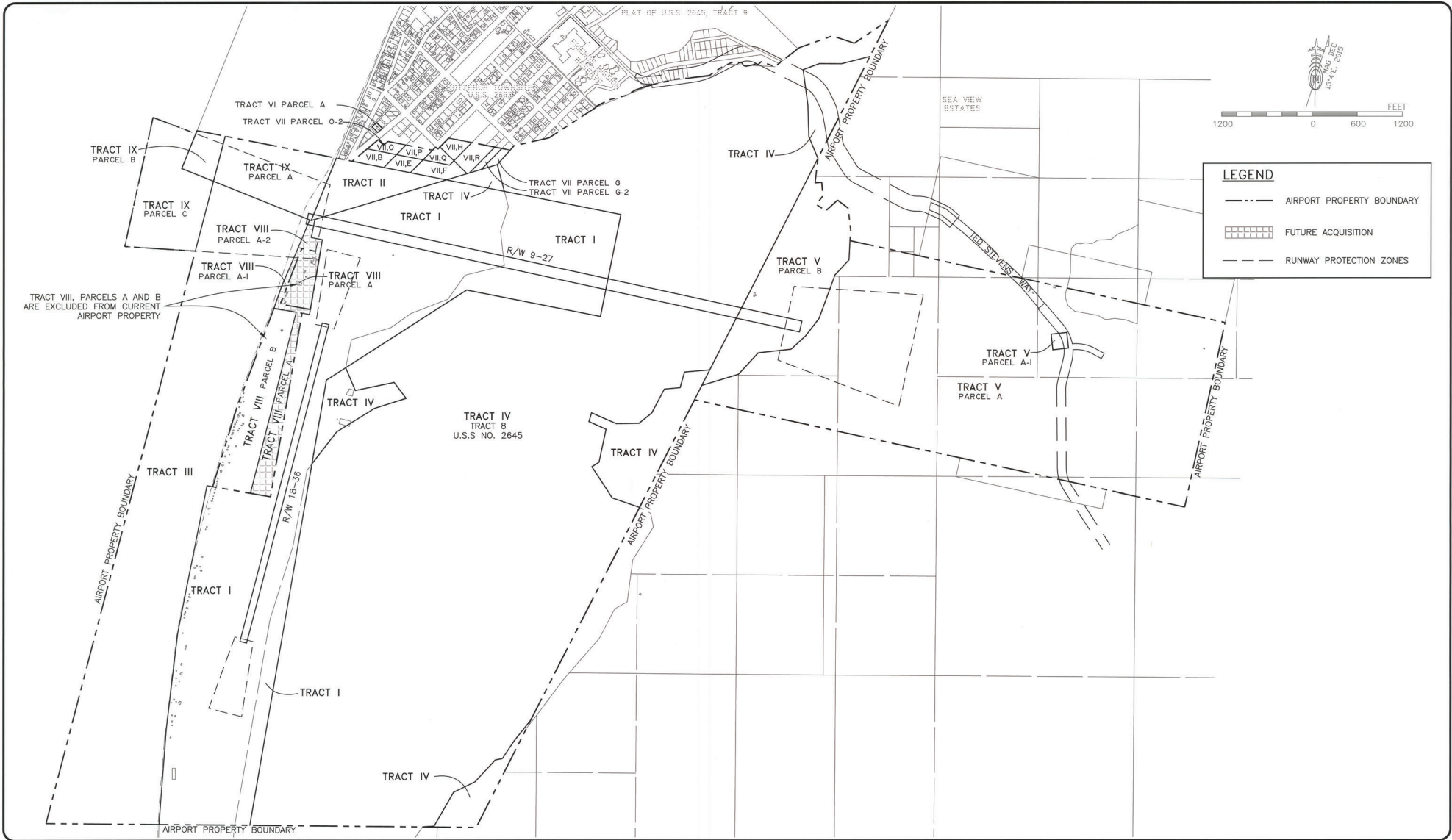
APPROVED: *Albert M.L. Beck* DATE: *11/6/18*
ALBERT M.L. BECK, P.E. PROJECT DELIVERY LEAD

SCH	3/18/13	UPDATE		
JGL	1/7/16	AS-BUILT		
KAR	11/18/16	UPDATE		
BY	DATE	NO.	REVISIONS	FAA

BY	DATE	NO.	REVISIONS	FAA
----	------	-----	-----------	-----

RALPH WIEN MEMORIAL AIRPORT
KOTZEBUE, ALASKA
RW 18-36 TERMINAL PLAN
ULTIMATE LAYOUT

SHEET
12
OF
15



DESIGN SLM DRAWN SLM CHECKED JJH	STATE OF ALASKA DEPARTMENT OF TRANSPORTATION AND PUBLIC FACILITIES NORTHERN REGION-AVIATION APPROVED: <i>Albert M.L. Beck</i> DATE <i>11/6/16</i> ALBERT M.L. BECK, P.E. PROJECT DELIVERY LEAD	CFJ 11/18/16 UPDATED <table border="1" style="width: 100%; border-collapse: collapse;"> <tr> <th>BY</th> <th>DATE</th> <th>NO.</th> <th>REVISIONS</th> <th>FAA</th> </tr> <tr> <td> </td> <td> </td> <td> </td> <td> </td> <td> </td> </tr> </table>	BY	DATE	NO.	REVISIONS	FAA						<table border="1" style="width: 100%; border-collapse: collapse;"> <tr> <th>BY</th> <th>DATE</th> <th>NO.</th> <th>REVISIONS</th> <th>FAA</th> </tr> <tr> <td> </td> <td> </td> <td> </td> <td> </td> <td> </td> </tr> </table>	BY	DATE	NO.	REVISIONS	FAA						RALPH WIEN MEMORIAL AIRPORT KOTZEBUE, ALASKA AIRPORT PROPERTY MAP (1 OF 2)	SHEET 14 OF 15
BY	DATE	NO.	REVISIONS	FAA																					
BY	DATE	NO.	REVISIONS	FAA																					

PROPERTY STATUS

TRACT	PARCEL	ACRES	GRANTOR	INTEREST	CONVEYANCE DOC	ACQ DATE	FAA GRANT #	RD INFO
I		304.665	USA	FEE SIMPLE	PATENT	5/14/1964	FAAP 9-50-009-C304	NOATAK-KOBUK 28/198
II		14.956	TOWNSITE TRUSTEE	FEE SIMPLE	TRUSTEE DEED	6/28/1956	ADAP 8-02-0160-03	NOATAK-KOBUK 36/128
III		250.334	SOA-DNR	PERP MGMT AUTHORITY	ILMT	7/27/1962	ADAP 8-02-0160-03	NOATAK-KOBUK 28/251
IV		871.127	USA	FEE SIMPLE	PATENT	5/9/1963	FAAP 9-50-009-C304	NOATAK-KOBUK 28/253
IV	TR 8 OF USS 2645		SOA-DNR	PERP MGMT AUTHORITY	ILMT	10/9/1963	FAAP 9-50-009-C304	NOATAK-KOBUK 28/253
V	A & A1	320.793	KIKIKTAGRUK INUPIAT CORP	AV EASEMENT	PAHE & ROW	8/25/1982	AIP 3-02-0160-01	KOTZEBUE 23/765
V	A-1	1.000	KIKIKTAGRUK INUPIAT CORP	FEE SIMPLE	QCD	8/25/1982	AIP 3-02-0160-01	KOTZEBUE 23/760
V	B	41.392	SOA-DNR	PERP MGMT AUTHORITY	ILMT	10/9/1963	AIP 3-02-0160-05	NOATAK-KOBUK 28/253
VI	A	0.202	SOA-DEPT. OF TRANSPORTATION & PUBLIC FAC.	* RELINGUISHED	COMMISSIONER'S QCD	9/14/2005	AIP 3-02-0160-03	KOTZEBUE 2007-000271-0
VII	B	1.890	NANA REGIONAL CORP	FEE SIMPLE	STAT WARR DEED	9/11/1975	ADAP 8-02-0160-01	KOTZEBUE 2/22
VII	E	1.650	NELSON WALKER	FEE SIMPLE	FINAL JUDGMENT	7/21/1977	ADAP 6-02-0160-04	KOTZEBUE 5/601
VII	F	2.746	EDITH BULLOCK	FEE SIMPLE	STAT WARR DEED	3/6/1975	ADAP 8-02-0160-03	KOTZEBUE 7/288
VII	G	0.755	J & M LATHROP	FEE SIMPLE	WARRANTY DEED	1/4/1984	AIP 3-02-0160-01	KOTZEBUE 26/351
VII	G-2	0.802	CITY OF KOTZEBUE	FEE SIMPLE	DEED OF VACATION	6/22/1987	AIP 3-02-0160-01	KOTZEBUE 33/196
VII	H	1.51	KOTZEBUE ELECTRIC ASSOC.	FEE SIMPLE	CORP WARR DEED	1/9/1985	AIP 3-02-0160-01	KOTZEBUE 28/498
VII	O	1.229	NANA REGIONAL CORP	FEE SIMPLE	CORP WARR DEED	10/7/1985	AIP 3-02-0160-01	KOTZEBUE 29/744
VII	O-2	0.010	NANA REGIONAL CORP	FEE SIMPLE	CORP WARR DEED	5/28/1990	AIP 3-02-0160-05	KOTZEBUE 37/856
VII	P	1.238	NELSON WALKER	FEE SIMPLE	WARRANTY DEED	1/19/1984	AIP 3-02-0160-01	KOTZEBUE 26/447
VII	Q	1.201	1ST NAT'L BANK, CONNOLLY, RICHARDS & RABEAU	FEE SIMPLE	WARRANTY DEED	12/2/1983	AIP 3-02-0160-01	KOTZEBUE 26/343
VII	R	2.529	1ST NAT'L BANK, CONNOLLY, RICHARDS & RABEAU	FEE SIMPLE	WARRANTY DEED	12/2/1983	AIP 3-02-0160-01	KOTZEBUE 26/347
VIII	A	13.302	USA	FUTURE FEE	SIMPLE ACQUISITION FOR ULTIMATE			RUNWAY 18-36 PART 77 SURFACE

TRACT	PARCEL	ACRES	GRANTOR	INTEREST	CONVEYANCE DOC	ACQ DATE	FAA GRANT #	RD INFO
VIII	A-1	1.765	USA-FAA	PERMIT**	PERMIT	8/28/2012	AIP 3-02-0160-18	KOTZEBUE 2013-000071-0
VIII	A-2	1.539	USA-FAA	PERMIT**	PERMIT	8/28/2012	AIP 3-02-0160-18	KOTZEBUE 2013-000071-0
IX	A	24.862	CITY OF KOTZEBUE	LEASE	PERP AIRPORT LEASE	8/8/2012	AIP 3-02-0160-18	KOTZEBUE 2012-000429-0
IX	B	5.523	CITY OF KOTZEBUE	LEASE	PERP AIRPORT LEASE	8/8/2012	AIP 3-02-0160-18	KOTZEBUE 2012-000429-0
IX	C	30.422	SOA-DNR	PERP MGMT AUTHORITY	ILMA	10/24/2012	AIP 3-02-0160-18	KOTZEBUE 2016-000244-0

* CONVEYED TO NATIONAL PARK SERVICE. NO LONGER PART OF THE KOTZEBUE AIRPORT. RETAINED AVIGATION EASEMENT.
 ** FEE SIMPLE ACQUISITION OF PARCELS CURRENTLY UNDER REVOCABLE USE PERMIT AS THE ULTIMATE
 DNR = STATE OF ALASKA, DEPT. OF NATURAL RESOURCES
 ILMA = INTERAGENCY LAND MANAGEMENT ASSIGNMENT
 ILMT = INTERAGENCY LAND MANAGEMENT TRANSFER
 PAHE & ROW = PERMIT, AVIGATION AND HAZARD EASEMENT AND RIGHT OF WAY

DESIGN SLM
 DRAWN SLM
 CHECKED JJH

STATE OF ALASKA
 DEPARTMENT OF TRANSPORTATION AND PUBLIC FACILITIES
 NORTHERN REGION-AVIATION
 APPROVED: *Albert M. Beck* DATE *11/6/18*
 ALBERT M.L. BECK, P.E. PROJECT DELIVERY LEAD

CFJ	11/18/16		UPDATED	
BY	DATE	NO.	REVISIONS	FAA

BY	DATE	NO.	REVISIONS	FAA
----	------	-----	-----------	-----

RALPH WIEN MEMORIAL AIRPORT
 KOTZEBUE, ALASKA
 AIRPORT PROPERTY MAP (2 OF 2)

SHEET
 15
 OF
 15