



U.S. Department
of Transportation
**Federal Aviation
Administration**

Alaskan Region Airports Division

222 W. 7th Avenue, #14
Anchorage, Alaska 99513-7587
Tel. (907) 271-5438 / Fax (907) 271-2851

September 30, 2020

Phil Cheasebro
ADOT&PF Aviation Design
4111 Aviation Ave
Anchorage, AK 99519-6900

Dear Mr. Cheasebro:

**Nightmute Airport
Nightmute, Alaska
As-Built Airport Layout Plan (10 July 2020)
(Original ALP Airspace #05-AAL-33-NRA)**

We have completed our review of the Nightmute Airport As-Built Airport Layout Plan (ALP) dated 10 July 2020, and find it acceptable for documenting the existing conditions of the airport.

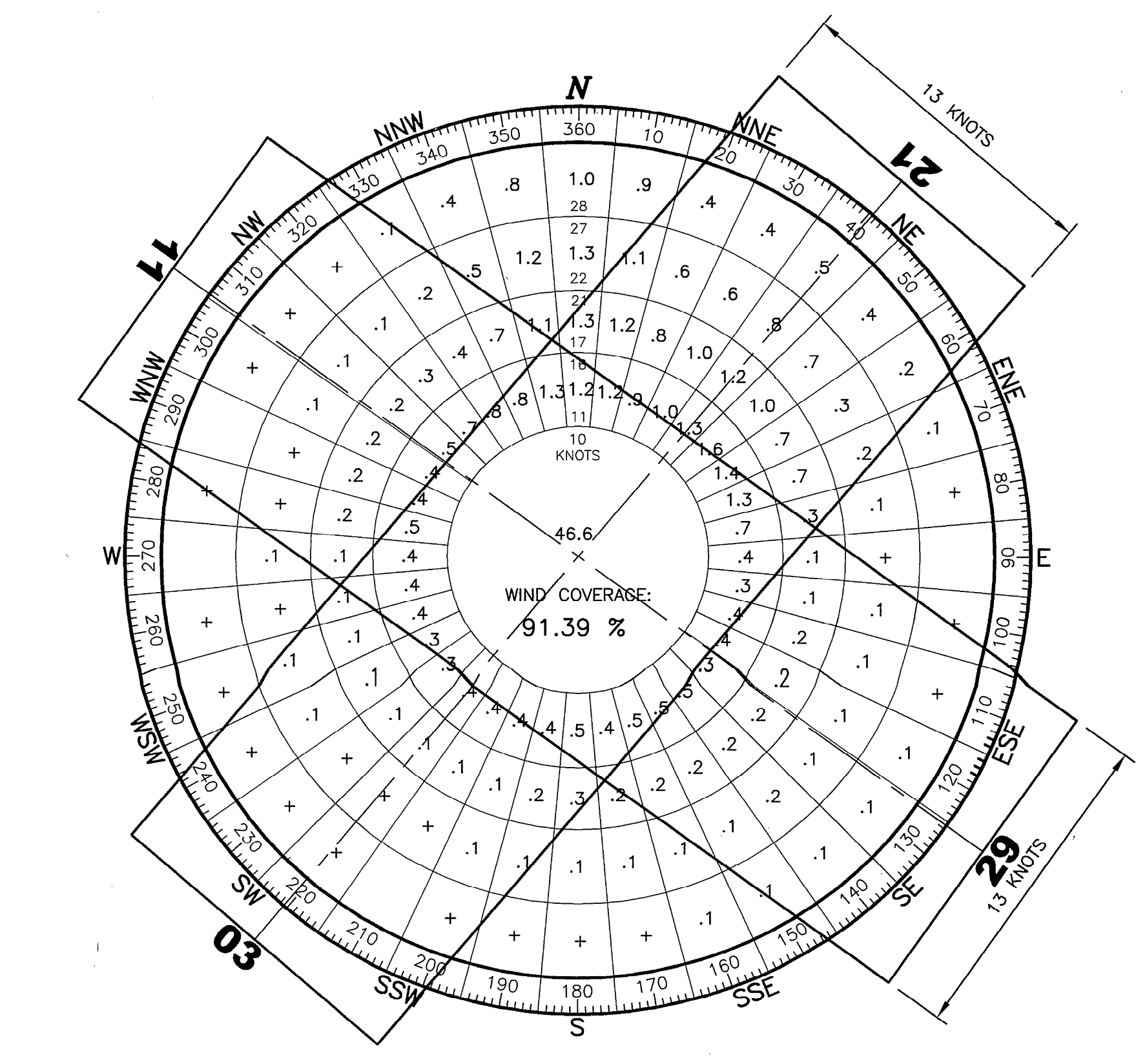
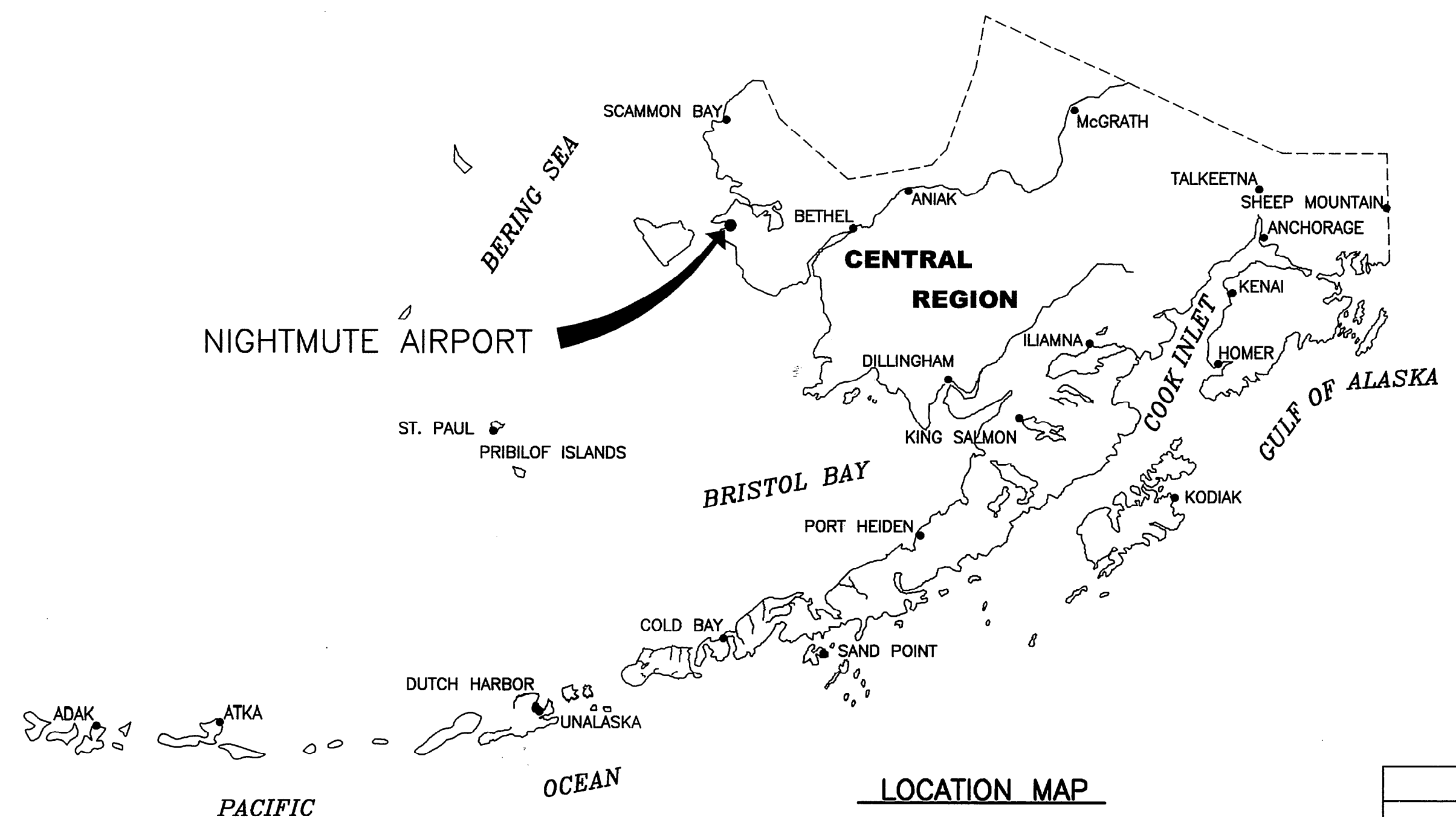
Please retain this letter in your files for future reference.

Sincerely,

PATRICK J Digitally signed by
ZETTLER PATRICK J ZETTLER
Date: 2020.09.30
17:53:26 -08'00'

Pat Zettler, P.E., Lead Engineer
Airports Division

Date Plotted: 10/25/2005, 11:05 AM
 Layout Name: W:\Projects\Nightmute\ALP\Final Drawings\new_01p_base_04.dwg
 File Name:
 Designed By: BJOHNSON
 Drawn By: MGTorman
 Checked By: RKEHL



WIND DATA TABLE				
RUNWAY	10.5 kt	13 kt	16 kt	20 kt
3/21	74.7%	82.4%	89.6%	-
11/29	66.9%	75.8%	85.0%	-
3/21 & 11/29	86.0%	91.4%	95.51%	-

SOURCE: UNIV. OF ALASKA STATE CLIMATE CENTER
 PERIOD: 5/1995 - 5/1997

LEGEND		
ITEM	EXISTING	ULTIMATE
AIRPORT REFERENCE POINT (A.R.P.)		
ANTENNA		
BLUFF		
BUILDINGS		
BUILDING RESTRICTION LINE		
FENCE		
PAPI		
PROPERTY LINE		
REIL		
ROADWAYS		
ROTATING BEACON		
SHORELINE		
SURVEY MONUMENT		
THRESHOLD MARKERS/LIGHTS		
TOPOGRAPHIC CONTOURS		
TREE (LARGE SINGLE)		
TREELINE		
VASI		
WIND CONE		
WIND CONE AND SEGMENTED CIRCLE		

AIRPORT DATA TABLE		
ITEM	EXISTING	ULTIMATE
ICAO IDENTIFIER	NONE	NONE
NATIONAL AIRPORT IDENTIFIER	IGT	IGT
FAA SITE NUMBER	50529.75*A	50529.75*A
AIRPORT ELEVATION (NAVD88)	7.15'	7.15'
AIRPORT REFERENCE CODE	A I	B II
MEAN MAX. TEMPERATURE, HOTTEST MONTH	52 F JULY	52 F JULY
AIRPORT AND TERMINAL NAVIGATION AIDS	NONE	GPS
	ROTATING BEACON	ROTATING BEACON
TAXIWAY LIGHTING/MARKING	NONE	M. I. / NA
OBSTRUCTION SURVEY SOURCE & TYPE	NONE	ANP
MAGNETIC DECLINATION, YEAR, RATE OF CHANGE	13°40'E, 2005,	-0°9' (W)/YEAR
	12°34'E, 2010,	-0°10' (W)/YEAR

GEOGRAPHIC COORDINATES TABLE				
ITEM	EXISTING LATITUDE	EXISTING LONGITUDE	ULTIMATE LATITUDE	ULTIMATE LONGITUDE
ARP	60°28'09.02"	164°42'14.54"	60°28'6.83"	164°41'59.99"
THRESHOLD RW 03	60°27'56.99"	164°42'35.15"	60°27'56.99"	164°42'35.15"
THRESHOLD RW 21	60°28'21.05"	164°41'53.92"	60°28'21.05"	164°41'53.92"
THRESHOLD RW 11	60°28'11.43"	164°42'2.58"	60°28'11.43"	164°42'2.58"
THRESHOLD RW 29		60°27'56.77"	164°41'21.05"	

SURVEY DATA SOURCE: MCCLINTOCK FIELD SURVEY (1998 & 2004)

RUNWAY 11/29 DATA TABLE		
ITEM	EXISTING	ULTIMATE
RUNWAY TYPE	ENTER UTILITY OR >UTILITY	UTILITY
FAR PART 77 APPROACH CATEGORY (V, NPI, P)	N/A	NPI / NPI
APPROACH SURFACES	N/A	20:1 / 34:1
VISIBILITY MINIMUM	N/A	> 1 SM
RUNWAY SURFACE	N/A	GRAVEL
PAVEMENT STRENGTH SW,DW,DTW,DDTW 1000lbs	N/A	N/A
AIRCRAFT APPROACH CATEGORY	N/A	B
AIRPLANE DESIGN GROUP	N/A	II
RUNWAY DIMENSIONS	N/A	75' x 2560'
TRUE BEARING	N/A	N55°33'51"W
EFFECTIVE GRADE	N/A	0 %
TOUCHDOWN ELEVATION (MSL NAVD88)	N/A	6.25' / 6.25'
RUNWAY SAFETY AREA (RSA)	N/A	150' x 3160'
LENGTH BEYOND R/W END	N/A	300' / 300'
RUNWAY PROTECTION ZONE (RPZ)	N/A	500' X 700' X 1000'
RUNWAY OBJECT FREE AREA (OFA)	N/A	500' x 3160'
RUNWAY OBSTACLE FREE ZONE (OFZ)	N/A	250' x 2960'
RUNWAY LIGHTING	N/A	M.I.
RUNWAY MARKING TYPE	N/A	NONE
RUNWAY VISUAL APPROACH AIDS	N/A	REIL / PAPI, REIL

RUNWAY 03/21 DATA TABLE			
ITEM	EXISTING	EXISTING	ULTIMATE
RUNWAY TYPE	ENTER UTILITY OR >UTILITY	UTILITY	UTILITY
FAR PART 77 APPROACH CATEGORY (V, NPI, P)	N/A	NPI / NPI	NPI / NPI
APPROACH SURFACES	N/A	34:1 / 34:1	34:1 / 34:1
VISIBILITY MINIMUM	N/A	> 1 SM	> 1 SM
RUNWAY SURFACE	N/A	GRAVEL	GRAVEL
PAVEMENT STRENGTH SW,DW,DTW,DDTW 1000lbs	N/A	N/A	N/A
AIRCRAFT APPROACH CATEGORY	N/A	B	B
AIRPLANE DESIGN GROUP	N/A	II	II
RUNWAY DIMENSIONS	N/A	75' X 3200'	75' X 3200'
TRUE BEARING	N/A	N39°06'05"E	N39°06'05"E
EFFECTIVE GRADE	N/A	0 %	0 %
TOUCHDOWN ELEVATION (MSL NAVD88)	N/A	7.15' / 6.25'	7.15' / 6.25'
RUNWAY SAFETY AREA (RSA)	N/A	150' x 3800'	150' x 3800'
LENGTH BEYOND R/W END	N/A	300' / 300'	300' / 300'
RUNWAY PROTECTION ZONE (RPZ)	N/A	500' X 700' X 1000'	500' X 700' X 1000'
RUNWAY OBJECT FREE AREA (OFA)	N/A	500' x 3800'	500' x 3800'
RUNWAY OBSTACLE FREE ZONE (OFZ)	N/A	250' x 3600'	250' x 3600'
RUNWAY LIGHTING	N/A	M.I.	M.I.
RUNWAY MARKING TYPE	N/A	NONE	NONE
RUNWAY VISUAL APPROACH AIDS	N/A	PAPI, REIL / PAPI, REIL	PAPI, REIL / PAPI, REIL



VICINITY MAP

T 5 N, R 88 W, SEC. 34
 T 4 N, R 89 W, SEC. 2 & 3
 SEWARD MERIDIAN
 U.S.G.S. BAIRD INLET (B-7, B-8, C-7, C-8) ALASKA

As-Built Accepted

PATRICK J ZETTLER
 Digitally signed by PATRICK J ZETTLER
 Date: 2020.09.30 17:05:09 -08'00'

MODIFICATION TO STANDARDS/ NON STANDARD CONDITIONS			
DESCRIPTION	STANDARD	EXISTING	ULTIMATE
WIND COVERAGE	95%	74.7%	91.4%
RUNWAY TO SEWAGE LAGOON SEPARATION	5000'	2850'	5000'
RUNWAY TO LANDFILL SEPARATION	5000'	4100'	9700'

DRAWING INDEX	
SHT #	TITLE
1	VICINITY MAP AND DATA TABLES
2	AIRPORT LAYOUT PLAN
3	RUNWAY PROFILES
4	INNER APPROACH SURFACE PLAN 03/21
5	INNER APPROACH SURFACE PLAN 11/29
6	FAA PART 77 SURFACES
7	PROPERTY MAP

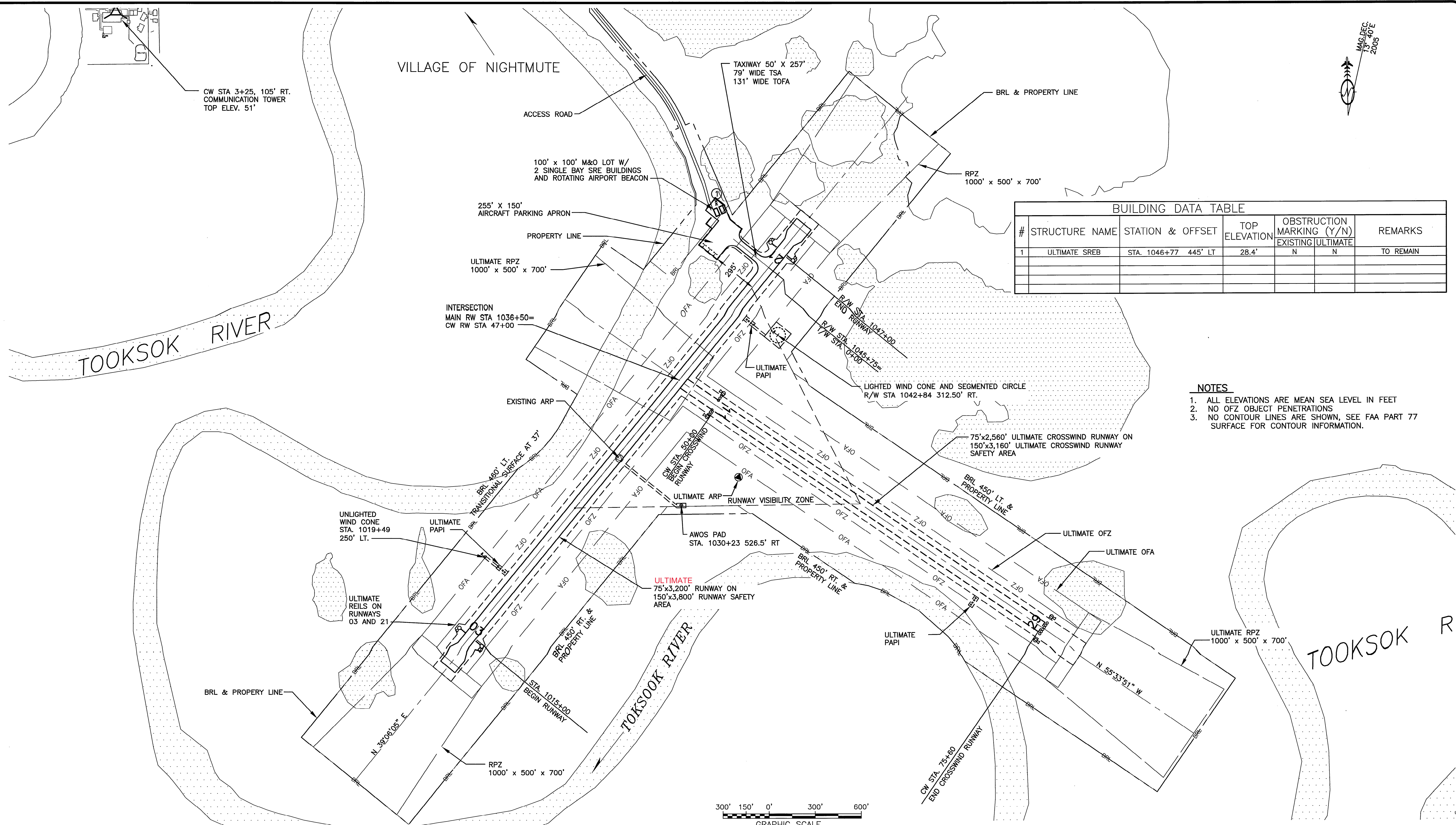
APPROVED:	DATE: 11/4/08
RECOMMENDED:	DATE: 2/8/09 05
ROBERT CAMPBELL, P.E. PRECONSTRUCTION ENGINEER	
HARVEY M. DOUTHITT, P.E. DESIGN SECTION CHIEF	

07/10/2020 CORRECTED RSA EXISTING CONDITIONS
04/08/14 AS-BUILT (AKSAS 518.09)

STATE OF ALASKA DEPARTMENT OF TRANSPORTATION AND PUBLIC FACILITIES CENTRAL REGION	
NIGHTMUTE AIRPORT NIGHTMUTE, ALASKA VICINITY MAP AND DATA TABLES	
DATE: 10/25/05	SHEET: 1 OF 7



Date Plotted: 14/08/2014 8:12 AM
 Layout Name: ALP
 File Name: W:\Projects\Nightmute\ALP\Final Drawings\new_elp_base_04.dwg
 Designed By: rjburnett
 Drawn By: rjburnett
 Checked By: JW



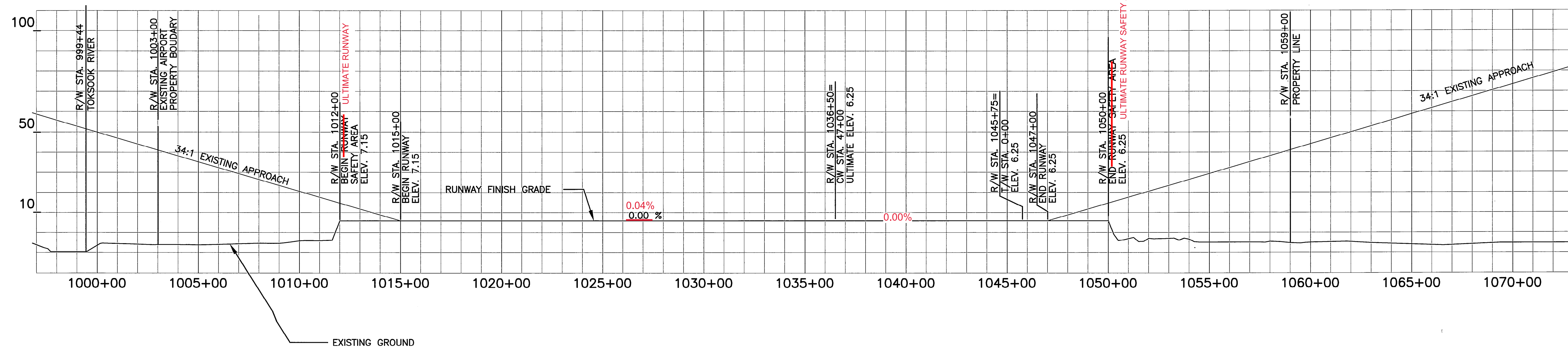
BUILDING DATA TABLE						
#	STRUCTURE NAME	STATION & OFFSET	TOP ELEVATION	OBSTRUCTION MARKING (Y/N)		REMARKS
				EXISTING	ULTIMATE	
1	ULTIMATE SREB	STA. 1046+77 445' LT	28.4'	N	N	TO REMAIN

- NOTES**
1. ALL ELEVATIONS ARE MEAN SEA LEVEL IN FEET
 2. NO OFZ OBJECT PENETRATIONS
 3. NO CONTOUR LINES ARE SHOWN, SEE FAA PART 77 SURFACE FOR CONTOUR INFORMATION.

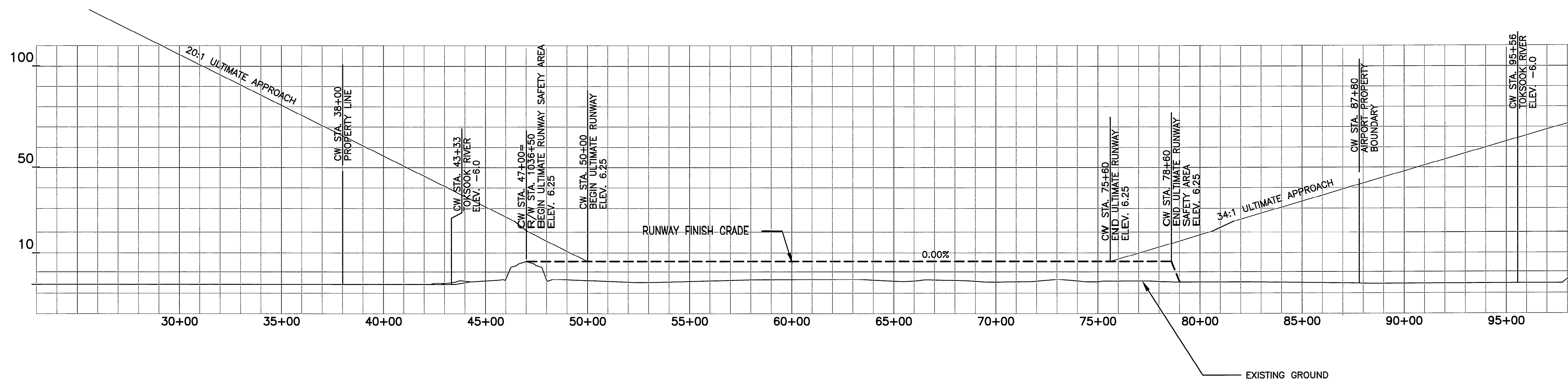


STATE OF ALASKA DEPARTMENT OF TRANSPORTATION AND PUBLIC FACILITIES CENTRAL REGION		DATE:
		04/08/2014
NIGHTMUTE AIRPORT NIGHTMUTE, ALASKA AIRPORT LAYOUT PLAN		SHEET:
		2 OF 7
07/10/2020 RJB BY	04/08/14 DATE	CORRECTED BSA EXISTING CONDITIONS AS-BUILT (AKSAS 51809) REVISION

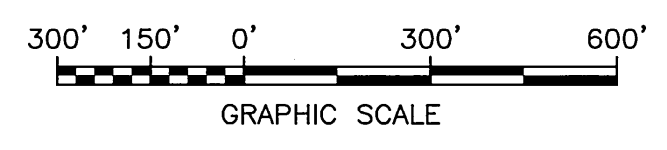
Date Plotted: 4/08/2014, 8:19 AM
 Layout Name: Profiles
 File Name: W:\Projects\Nightmute\ALP\Final Drawings\new_alp_base_04.dwg
 Designed By: rburnett
 Drawn By: JW
 Checked By: JW



RUNWAY 03-21

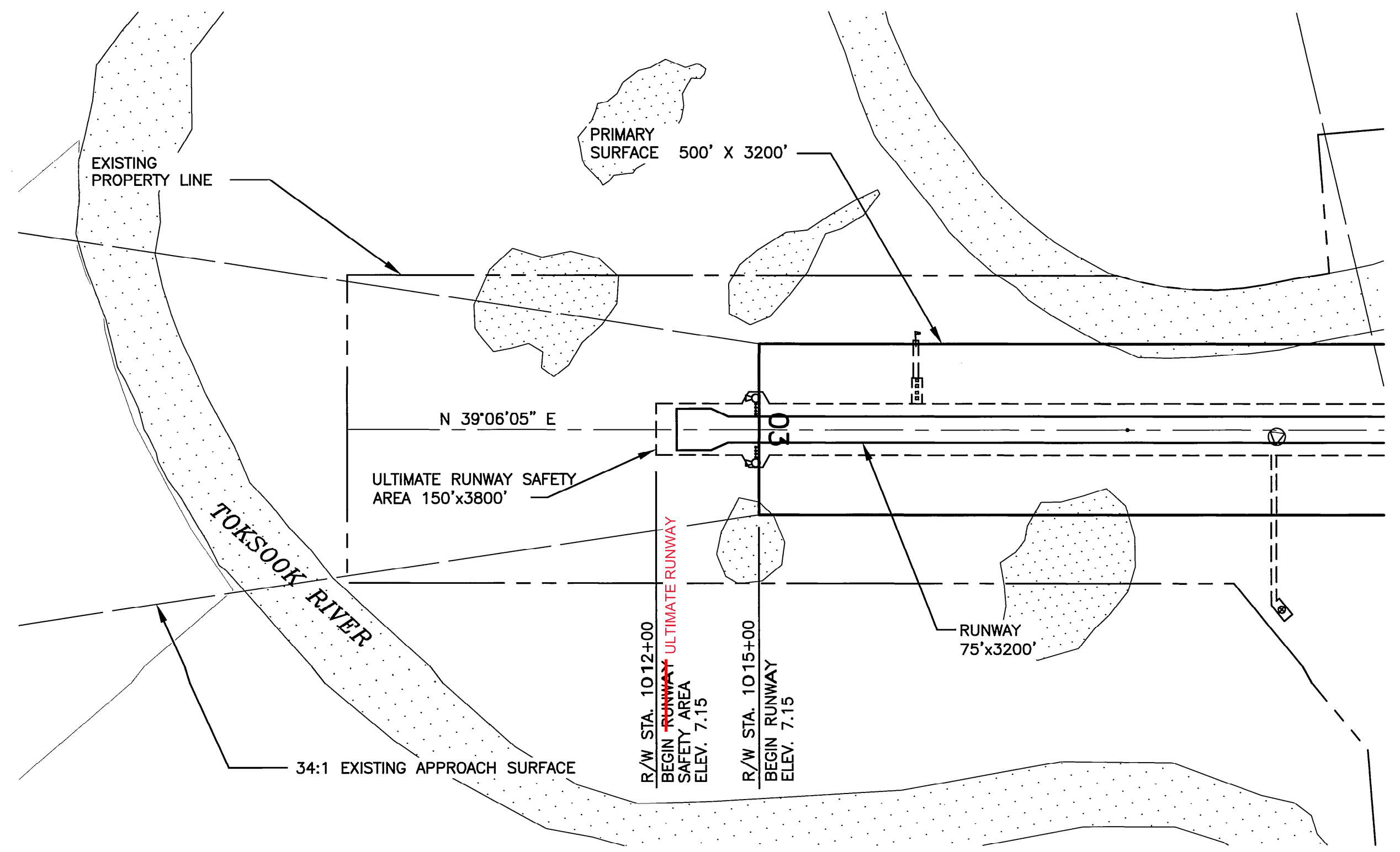


RUNWAY 11-29 (CROSSWIND RUNWAY)



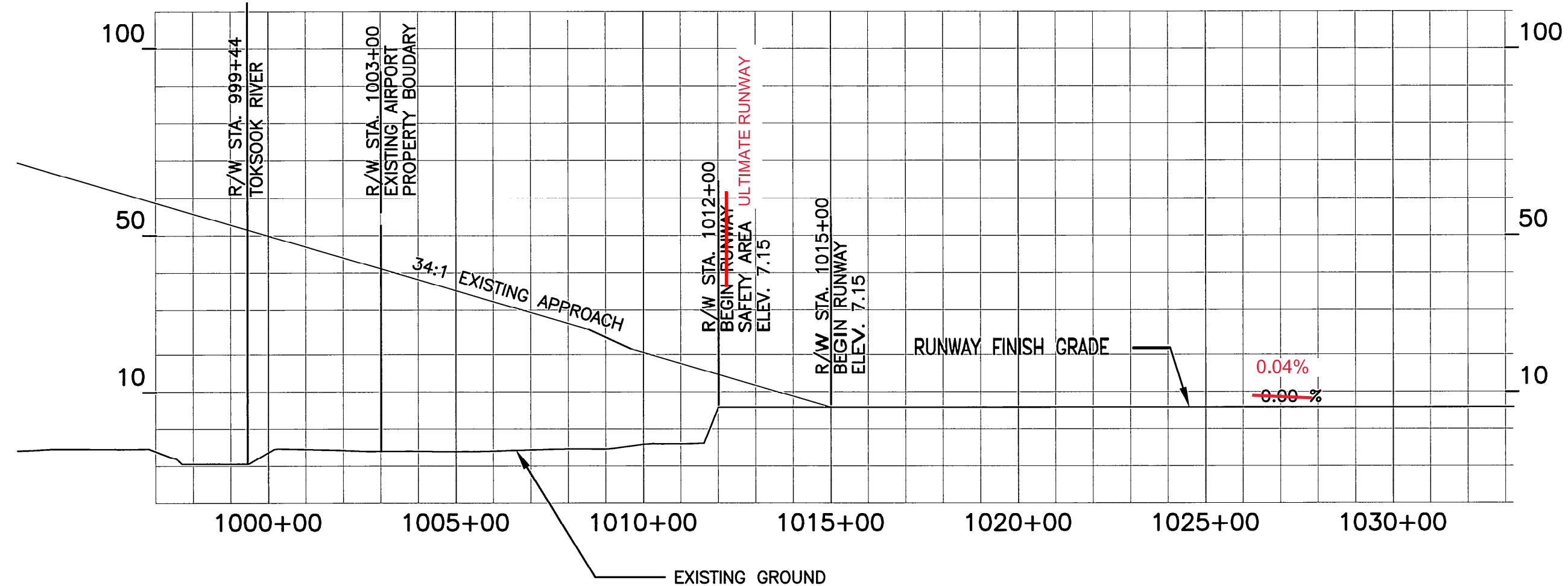
		STATE OF ALASKA DEPARTMENT OF TRANSPORTATION AND PUBLIC FACILITIES CENTRAL REGION	
		NIGHTMUTE AIRPORT NIGHTMUTE, ALASKA RUNWAY PROFILES	
		DATE: 04/08/2014	
		SHEET: 3 OF 7	
BY: RJB	DATE: 04/08/14	REVISION: 07/10/2011 CORRECTED RSA EXISTING CONDITIONS	
BY:	DATE:	REVISION:	

Date Plotted: 4/08/2014, 8:25 AM
 Layout Name: InAPP20
 File Name: W:\Projects\Nightmute\APP20\Drawings\new_olp_base_04.dwg
 Designed By: rburnett
 Drawn By: rburnett
 Checked By: JW

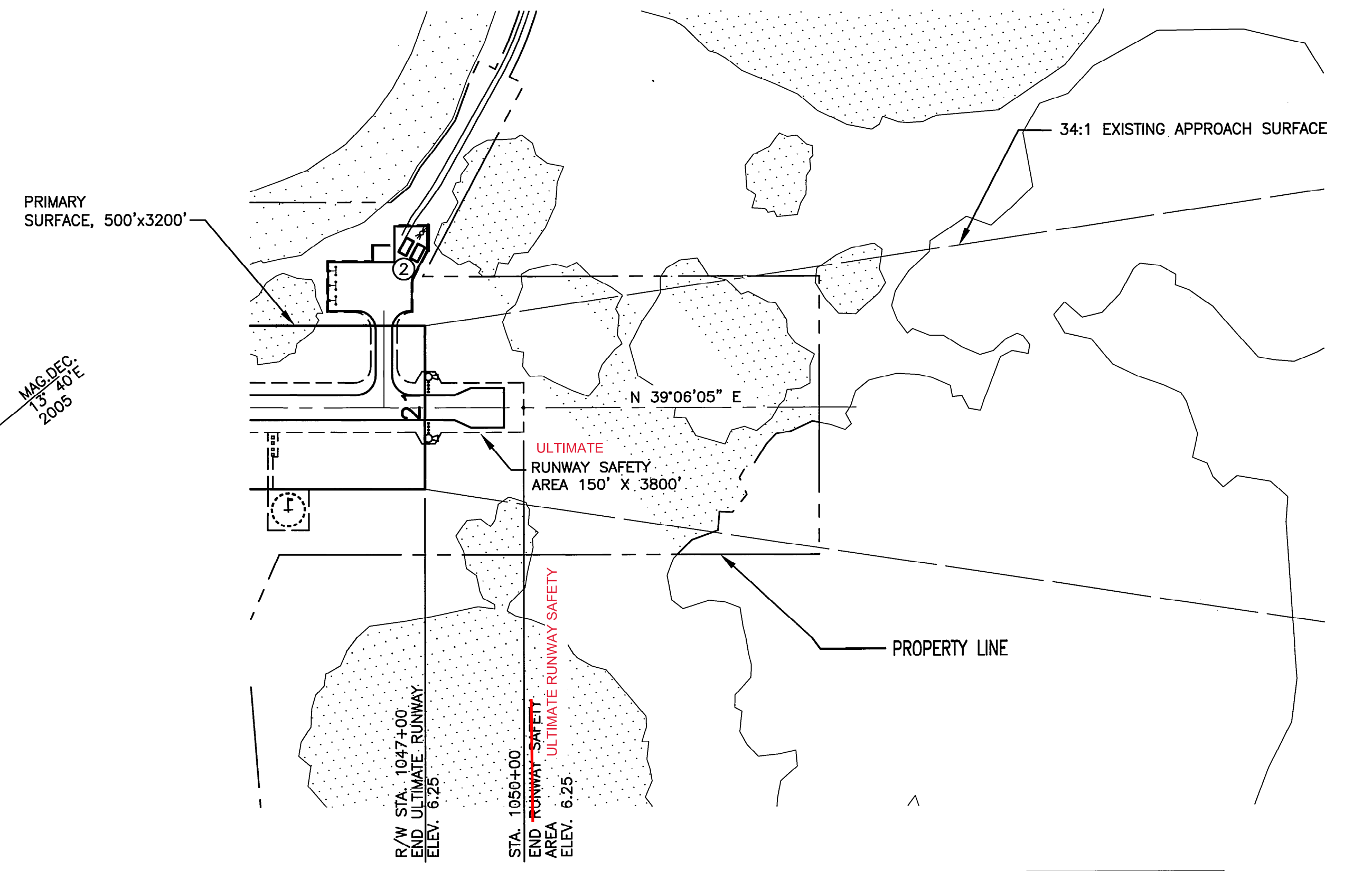
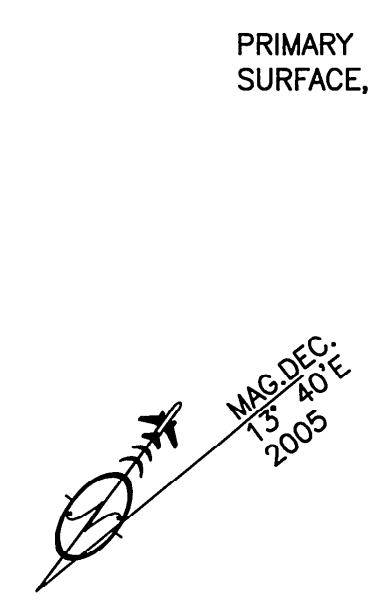
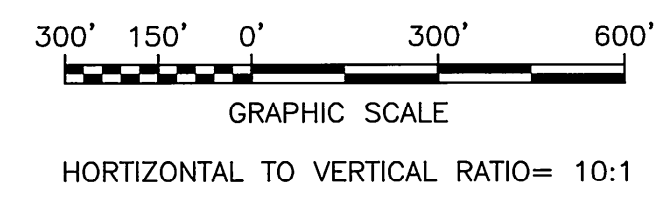


F.A.R. PART 77 APPROACH SURFACE OBSTRUCTION TABLE (INNER PORTION RW 3)

OBSTRUCTION ID	DESCRIPTION	OBSTRUCTION DIST/OFFSET	OBSTRUCTION ELEVATION	SURFACE PENETRATED	SURFACE ELEVATION	AMOUNT OF PENETRATION	DISPOSITION	STAGE TO BE CORRECTED
NO OBSTRUCTIONS								

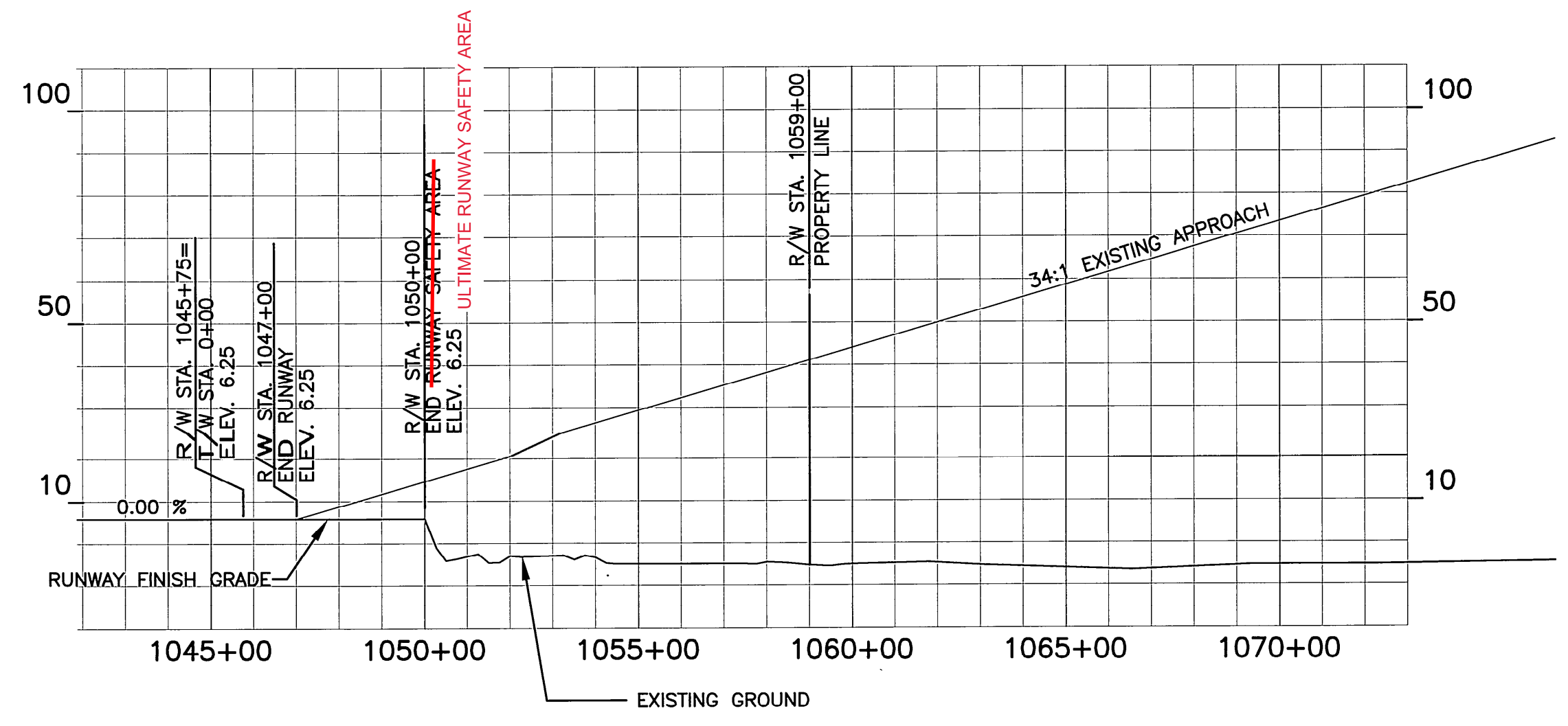


- NOTES:
- THERE ARE NO OBSTRUCTIONS IN THE APPROACH OF RUNWAY 03, THEREFORE THE OBSTRUCTION CLEARANCE SLOPE IS ESTABLISHED AS 50:1 PER ORDER 5010, APPENDIX 1, PARA 57.
 - THERE ARE NO OBJECT PENETRATIONS IN THE THRESHOLD SITING SURFACES OF RUNWAY 03, AS DEFINED IN FAA AC 150/5300-13, chg 9, APPENDIX 2.



F.A.R. PART 77 APPROACH SURFACE OBSTRUCTION TABLE (INNER PORTION RW 21)

OBSTRUCTION ID	DESCRIPTION	OBSTRUCTION DIST/OFFSET	OBSTRUCTION ELEVATION	SURFACE PENETRATED	SURFACE ELEVATION	AMOUNT OF PENETRATION	DISPOSITION	STAGE TO BE CORRECTED
2	SREB	445'	28.4'	TRANSITIONAL	27.85'	0.55'	TO REMAIN	N/A



- NOTES:
- THE CONTROLLING OBSTRUCTION FOR RUNWAY 21 IS TOKSOOK HILL STA 1101+91 1074' LT, ELEVATION IS 157'. THE OBSTRUCTION CLEARANCE SLOPE IS ESTABLISHED AS 36:1 PER ORDER 5010, APPENDIX 1, PARA 57.
 - THERE ARE NO OBJECT PENETRATIONS IN APPROACH SURFACES OF RUNWAY 21, AS DEFINED IN FAA AC 150/5300-13, chg 9, APPENDIX 2. TOKSOOK MOUNTAIN PENETRATES THE DEPARTURE SURFACE APPROXIMATELY 85'.

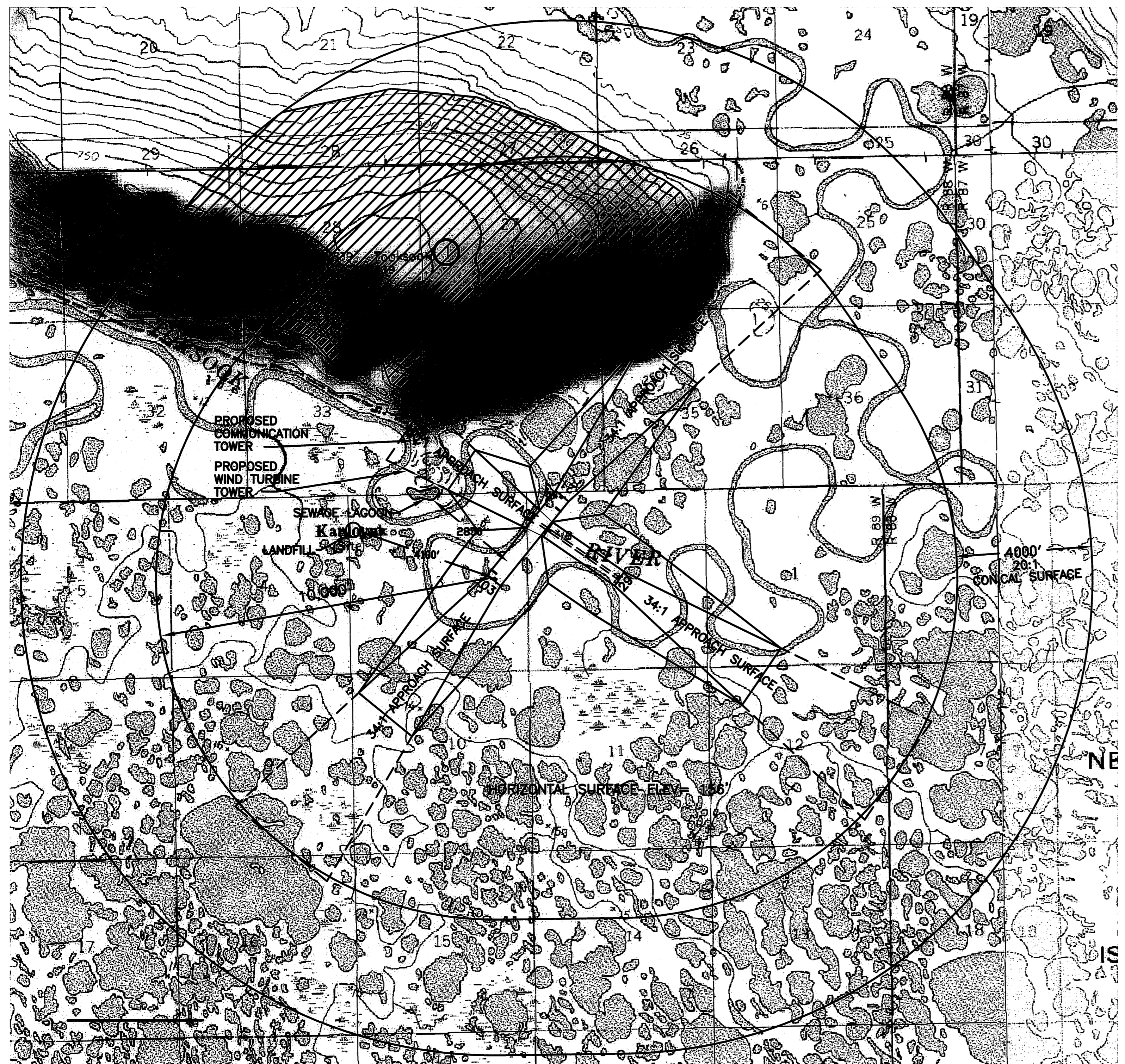
BY	DATE	REVISION
RJB	04/08/14	AS-BUILT (AKSAS 51809)
	07/10/2021	CORRECTED BSA EXISTING CONDITIONS

STATE OF ALASKA
DEPARTMENT OF TRANSPORTATION
AND PUBLIC FACILITIES
CENTRAL REGION

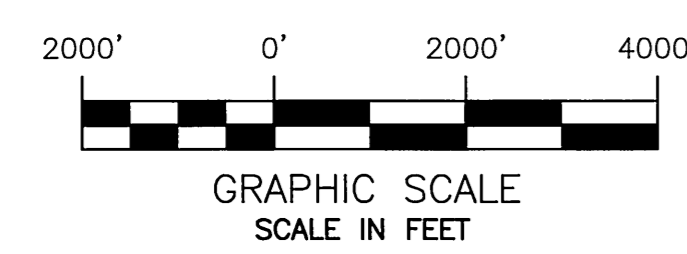
NIGHTMUTE AIRPORT
 NIGHTMUTE, ALASKA
 INNER APPROACH SURFACE PLAN
 RUNWAY 03/21

DATE: 04/08/2014
 SHEET: 4 OF 7

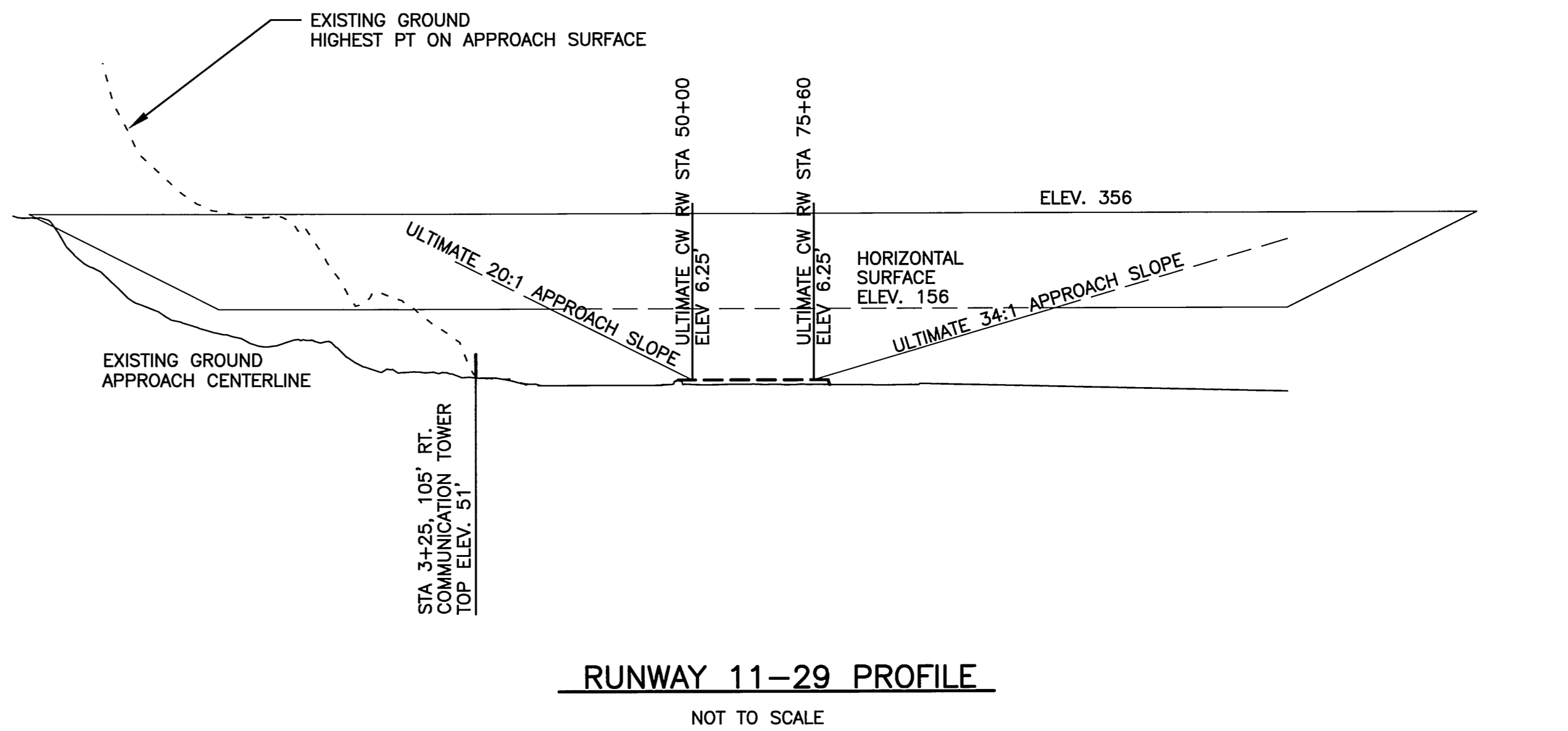
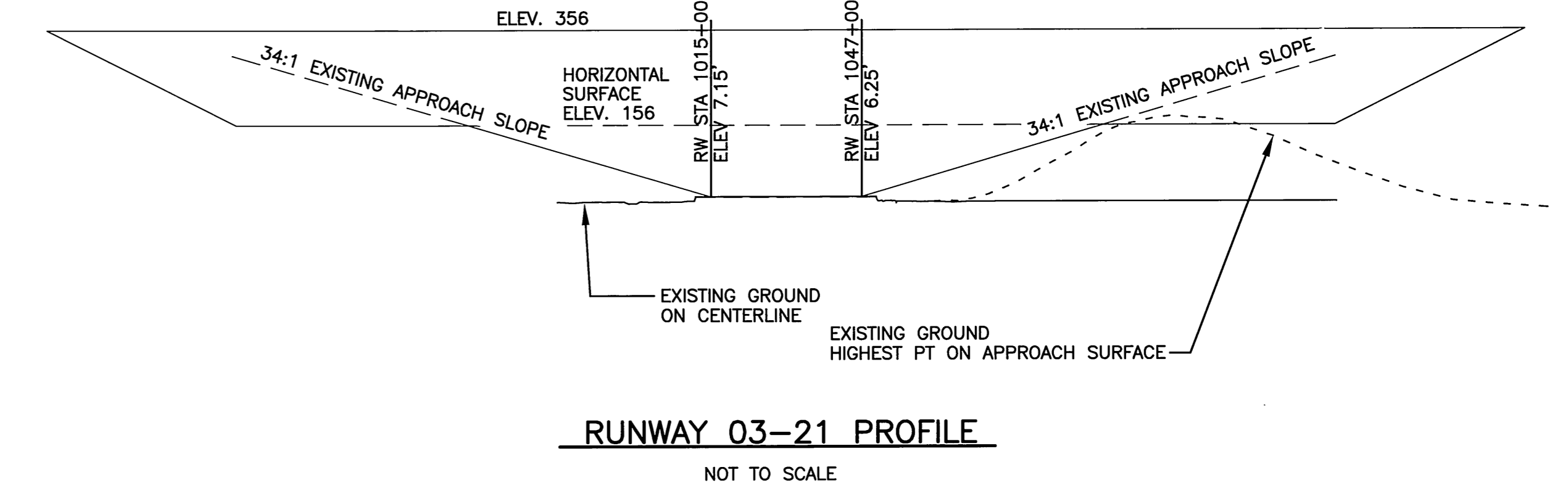
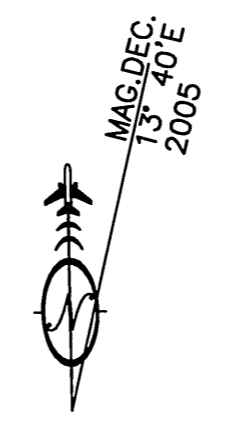
Date Plotted: 4/08/2014, 8:30 AM
 Layout Name: A:\space
 File Name: W:\Projects\Nightmute VLP\Final Drawings\new_clip_base_04.dwg
 Designed By: B.COHNSON
 Drawn By: C.Burnett
 Checked By: R.KIEHL



OBJECT PENETRATION AREAS (TERRAIN)



1. REFER TO INNER PORTION OF THE APPROACH SURFACE DRAWINGS FOR CLOSE IN OBSTRUCTIONS.
2. PRIMARY SURFACE WIDTH 500'.
3. ELEVATION DATUM IS NAVD88.



34:1 APPROACH SURFACE OBSTRUCTION TABLE (OUTER PORTION RW 03/21)

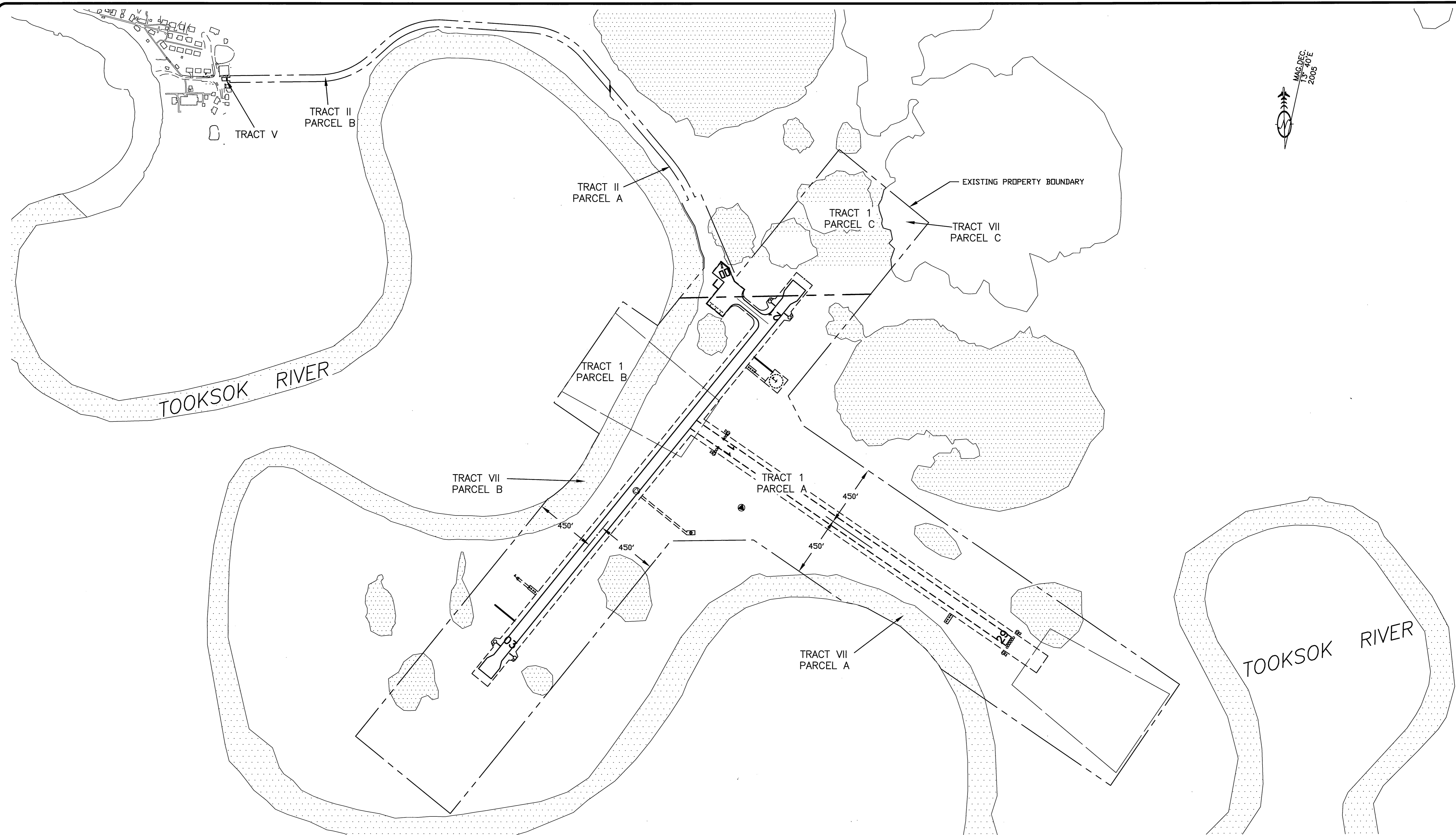
ID #	DESCRIPTION	STATION/OFFSET	ELEVATION (NAVD88)	SURFACE PENETRATED	SURFACE ELEVATION	AMOUNT PENETRATION	DISPOSITION	STAGE TO CORRECT
1	TERRAIN	1062+89/8825LT	839	HOR/CON	156-356'	0-678'	PERMANENT	N/A

20:1/34:1 APPROACH SURFACE OBSTRUCTION TABLE (OUTER PORTION RW 11/29)

ID #	DESCRIPTION	STATION/OFFSET	ELEVATION (NAVD88)	SURFACE PENETRATED	SURFACE ELEVATION	AMOUNT PENETRATION	DISPOSITION	STAGE TO CORRECT
1	TERRAIN	-38+81/3348'LT	839	HOR/CON	156-356'	0-678'	PERMANENT	N/A

STATE OF ALASKA DEPARTMENT OF TRANSPORTATION AND PUBLIC FACILITIES CENTRAL REGION		
NIGHTMUTE AIRPORT NIGHTMUTE, ALASKA FAA PART 77 SURFACES		DATE: 04/08/2014 SHEET: 6 OF 7
BY: RJB	DATE: 04/08/14	AS-BUILT (AKSAS 51809) REVISION

Date Plotted: 4/08/2014, 8:34 AM
 Layout Name: W:\Projects\Nightmute\ALP\Final Drawings\view_base_04.dwg
 File Name:
 Designed By: BJOHNSON
 Drawn By: rBurnett
 Checked By: RKEHL



PROPERTY STATUS							
ID #	INTEREST	GRANTOR	GRANTEE	PARCEL SIZE	DATE ACQUIRED	RECORDED DOC NO.	ACQUIRED AIP NO.
TR 1, PCL A	FEE - SURFACE ESTATE	NUNAKAUIAK YUPIK CORP	STATE OF ALASKA, DOT/PF	158.41 ac	8-22-2012	2007-000810-0	3-02-0195-001
TR 1, PCL B	FEE - SURFACE ESTATE	NUNAKAUIAK YUPIK CORP	STATE OF ALASKA, DOT/PF	7.31 ac	8-22-2012	2007-000810-0	3-02-0195-001
TR 1, PCL C	FEE - SURFACE ESTATE	CHINURUK, INC	STATE OF ALASKA, DOT/PF	21.15 ac	8-22-2012	2007-000598-0	3-02-0195-001
	QCD - SUBSURFACE ESTATE	CALISTA CORP.	STATE OF ALASKA, DOT/PF		8-22-2012	2007-000597-0	3-02-0195-001
TR II, PCL A	FEE - SURFACE ESTATE	CHINURUK, INC	STATE OF ALASKA, DOT/PF	1.14 ac	8-22-2012	2007-000598-0	3-02-0195-001
	QCD - SUBSURFACE ESTATE	CALISTA CORP.	STATE OF ALASKA, DOT/PF		8-22-2012	2007-000597-0	3-02-0195-001
TR II, PCL B	FEE - SURFACE ESTATE	CHINURUK, INC	STATE OF ALASKA, DOT/PF	3.52 ac	8-22-2012	2007-000598-0	3-02-0195-001
	QCD - SUBSURFACE ESTATE	CALISTA CORP.	STATE OF ALASKA, DOT/PF		8-22-2012	2007-000597-0	3-02-0195-001
TR V	FEE - SURFACE ESTATE	CHINURUK, INC	STATE OF ALASKA, DOT/PF	0.05 ac	8-22-2012	2007-000598-0	3-02-0195-001
	QCD - SUBSURFACE ESTATE	CALISTA CORP.	STATE OF ALASKA, DOT/PF		8-22-2012	2007-000597-0	3-02-0195-001
TR VII, PCL A	INTERAGENCY LAND MANAGEMENT AGREEMENT (ILMA)	STATE OF ALASKA, DNR	STATE OF ALASKA, DOT/PF	5.24 ac	8-22-2012	2008-000159-0	3-02-0195-001
TR VII, PCL B	INTERAGENCY LAND MANAGEMENT AGREEMENT (ILMA)	STATE OF ALASKA, DNR	STATE OF ALASKA, DOT/PF	9.51 ac	8-22-2012	2008-000159-0	3-02-0195-001
TR VII, PCL C	INTERAGENCY LAND MANAGEMENT AGREEMENT (ILMA)	STATE OF ALASKA, DNR	STATE OF ALASKA, DOT/PF	2.23 ac	8-22-2012	2008-000159-0	3-02-0195-001

BY	DATE	REVISION
RJB	04/08/14	AS-BUILT (AKSAS 51809)

STATE OF ALASKA
DEPARTMENT OF TRANSPORTATION
AND PUBLIC FACILITIES
CENTRAL REGION

NIGHTMUTE AIRPORT
 NIGHTMUTE, ALASKA
 PROPERTY MAP

DATE: 04/08/2014
 SHEET: 7 OF 7