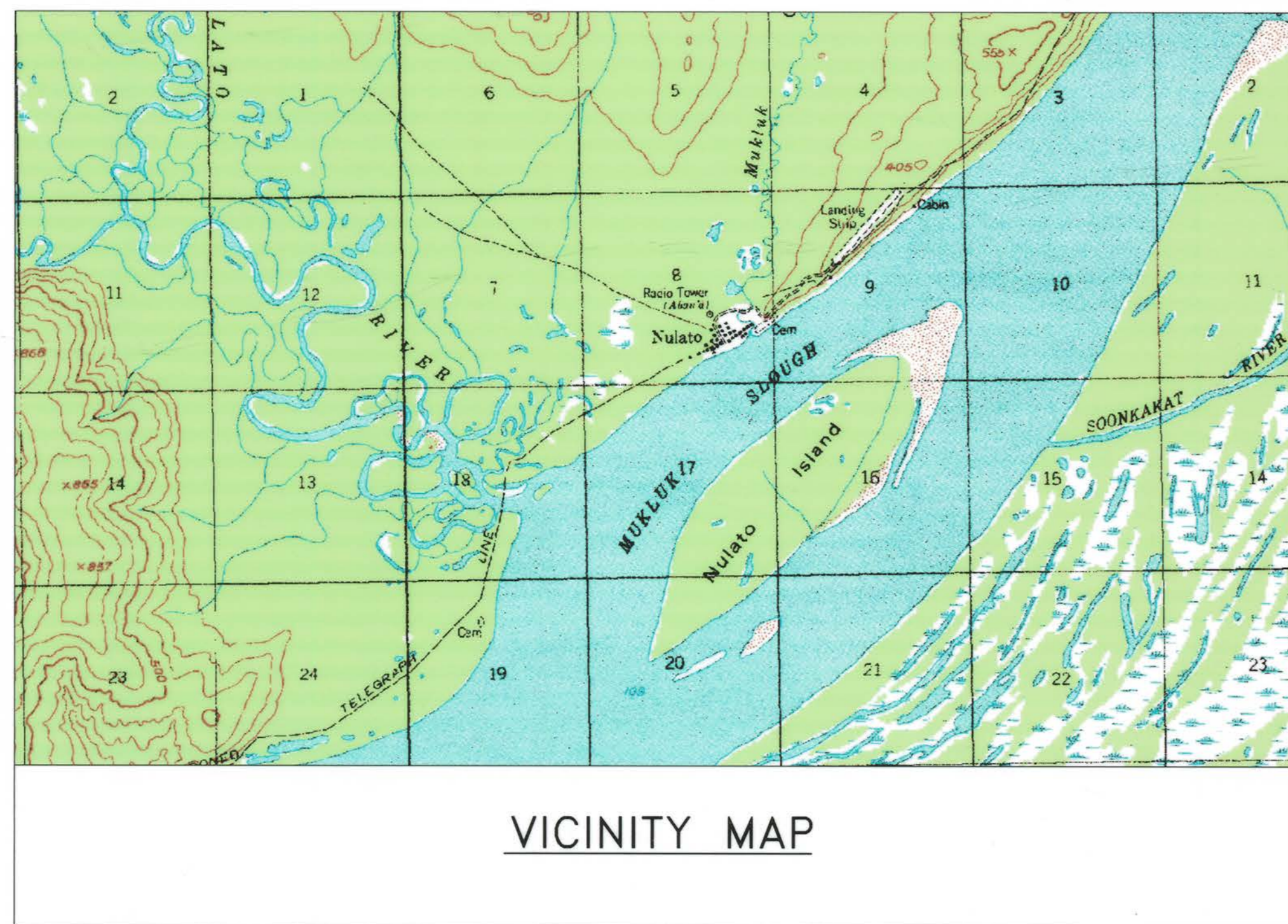


NULATO AIRPORT AIRPORT LAYOUT PLAN NULATO, ALASKA



LEGEND		
	EXISTING	ULTIMATE
PROPERTY LINE	---	---
BUILDING RESTRICTION LINE (BRL)	B.R.L.	SAME
DEVELOPMENT	[]	[]
WIND CONE & SEGMENTED CIRCLE	☼	SAME
BUILDINGS	□	SAME
ROADWAYS	====	====
AIRPORT REFERENCE POINT (ARP)	⊙	⊙
ROTATING BEACON	⊙	SAME
SHORELINE/ WATERLINE	~	SAME
TREELINE	~	SAME
THRESHOLD	---	SAME

SHEET INDEX	
SHEET NO.	DESCRIPTION
1	COVER SHEET
2	AIRPORT DATA & LAYOUT PLAN
3	INNER PORTION OF APPROACH SURFACES
4	AIRSPACE & COMPOSITE APPROACH PROFILES

THIS ALP IS BASED ON STANDARDS IN EFFECT AT THE TIME OF ORIGINAL FAA APPROVAL.

THIS ALP WAS PREPARED FROM AS-BUILT DATED 12/20/2012 AND FROM THE PROPERTY PLAN DATED 02/09/1990.

THE ALP BORDER WAS UPDATED 6/26/2015.

DESIGN CML
DRAWN CAT
CHECKED CML

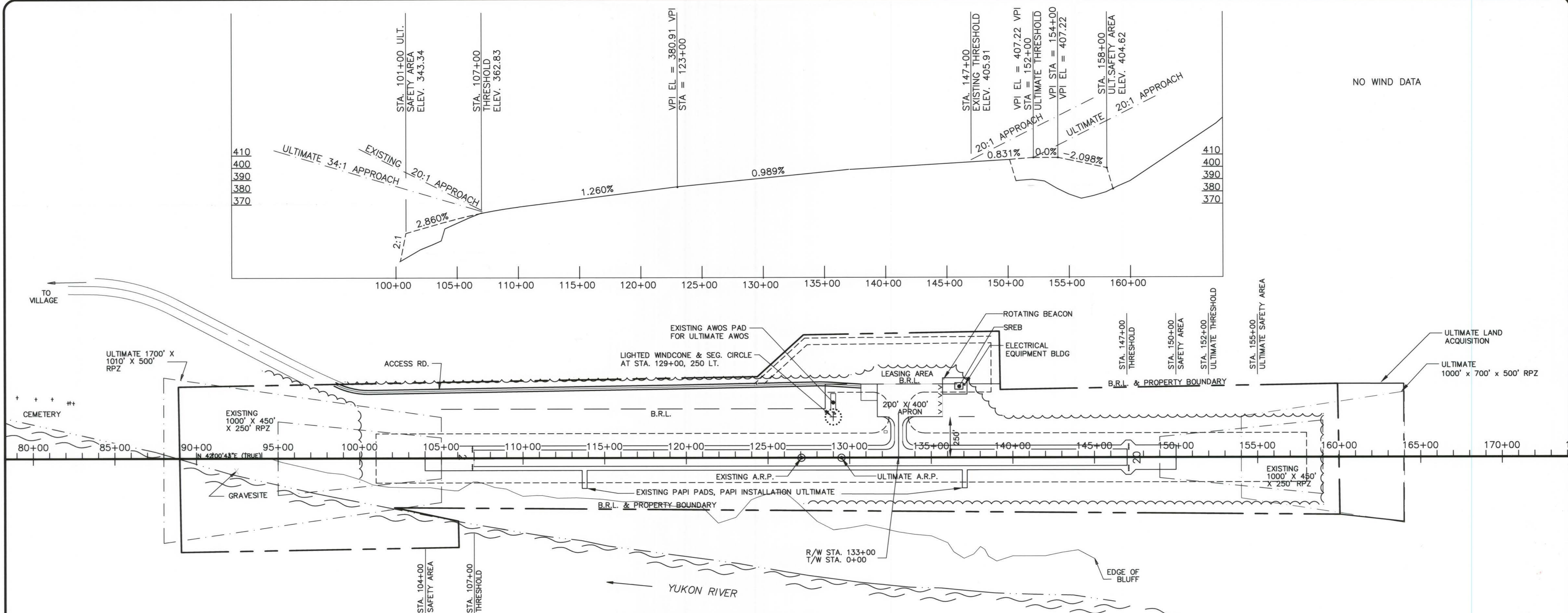
STATE OF ALASKA
DEPARTMENT OF TRANSPORTATION AND PUBLIC FACILITIES
NORTHERN REGION-AVIATION
APPROVED: Albert M.L. Beck DATE 7/23/15
ALBERT M.L. BECK, P.E. DESIGN GROUP CHIEF

AIRPORT LAYOUT PLAN CONDITIONAL APPROVAL SUBJECT TO ALP APPROVAL LETTER DATED ___/___/___
FAA AIRSPACE REVIEW NUMBER: 2012-BAI-06-14A
AS-BUILT
P. J. J. J. DATE 8/10/15
FAA, AIRPORTS DIVISION ALASKAN REGION, AAL-

DAP	DATE	REVISIONS
7/15/15	AS-BUILT	

NULATO AIRPORT
NULATO, ALASKA
COVER SHEET

SHEET
1 OF
4

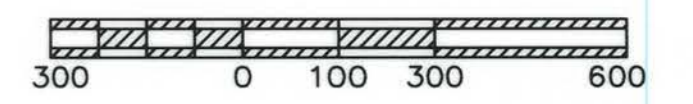


AIRPORT DATA			
		EXISTING	ULTIMATE
AIRPORT ELEVATION (MSL)		405.91'	407.22'
AIRPORT REFERENCE CODE		BII	SAME
MEAN MAX. DAILY TEMP & HOTTEST MONTH		72° JULY	N/A
TAXIWAY LIGHTING		MITL	SAME
RAMP LIGHTING		NONE	SAME
NAVIGATION AIDS		BEACON	SAME
COMMUNICATION AIDS		NONE	SAME
AIRPORT REFERENCE POINT (ARP)	STA. 129+50	LAT. LONG. N64°43'45.56" W158°04'27.16"	N64°43'47.35" W158°04'23.37"
THRESHOLD 2	STA. 107+00	LAT. LONG. N64°43'30.89" W158°04'58.06"	SAME
THRESHOLD 20	STA. 147+00 ULT. STA. 152+00	LAT. LONG. N64°44'00.22" W158°03'56.26"	N64°44'03.80" W158°03'48.67"
DATA BASE CONTROL YEAR: NAD83			
COORDS & ELEV BASIS: AGIS AS-BUILT SURVEY PROJECT # 142812			

RUNWAY DATA		
RUNWAY 2/20		
	EXISTING	ULTIMATE
% WIND COVERAGE	NO DATA	NO DATA
INSTRUMENT RUNWAY	N/A	NPI
RUNWAY SURFACE TYPE	GRAVEL	SAME
PAVEMENT STRENGTH	N/A	N/A
APPROACH SURFACE	20:1	34:1 / 20:1
APPROACH VISIBILITY MINIMUMS	≥ 1 MILE	SAME
RUNWAY LIGHTING	MIRL	SAME
RUNWAY MARKING	NONE	SAME
VISUAL APPROACH AIDS	NONE	PAPI / REIL
R/W DIMENSIONS	100'x4000'	100'x4500'
R/W SAFETY AREA	150'x4600'	150'x5100'
R/W OBJECT FREE AREA (ROFA)	500'x4600'	500'x5100'
R/W OBSTACLE FREE ZONE (ROFZ)	400'x4400'	400'x4900'

TAXIWAY DATA		
	EXISTING	ULTIMATE
T/W WIDTH	50'	SAME
T/W SAFETY AREA	120'	SAME
T/W OBJECT FREE AREA	186'	SAME

MODIFICATION TO STANDARD			
ITEM	STANDARD	EXISTING	ULTIMATE
RUNWAY SIDE SLOPES	4:1	1.5:1	1.5:1



H:\Info_Communities\Nulato\02_ALP_File\2014_AS-built\NUL_ALP-AVI_ALP_Data

DESIGN CML
 DRAWN CAT
 CHECKED CML

STATE OF ALASKA
 DEPARTMENT OF TRANSPORTATION AND PUBLIC FACILITIES
 NORTHERN REGION-AVIATION

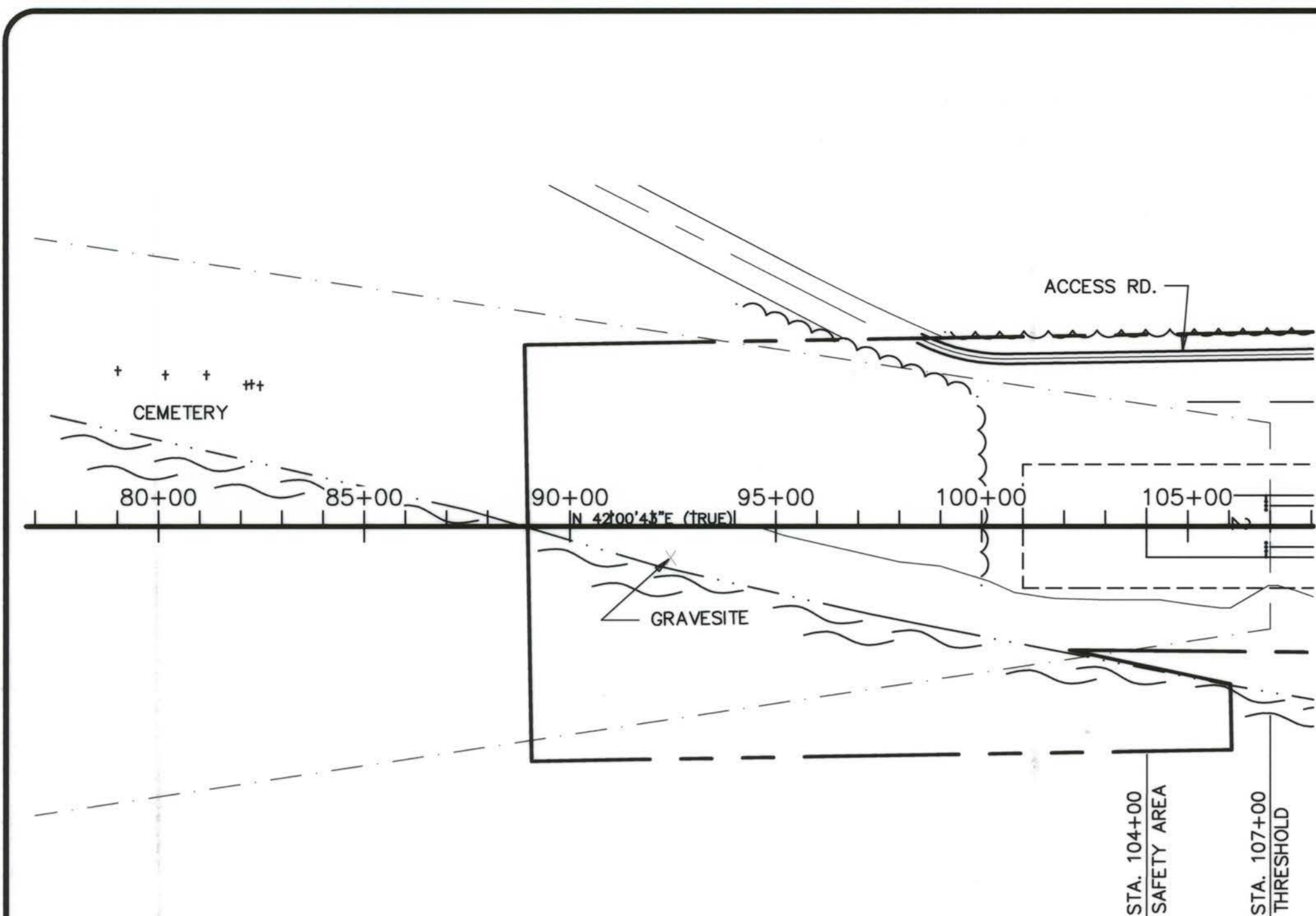
APPROVED: Albert M.L. Beck DATE 7/23/15
 ALBERT M.L. BECK, P.E. DESIGN GROUP CHIEF

BY	DATE	REVISIONS	FAA
	7/15/15	AS-BUILT	

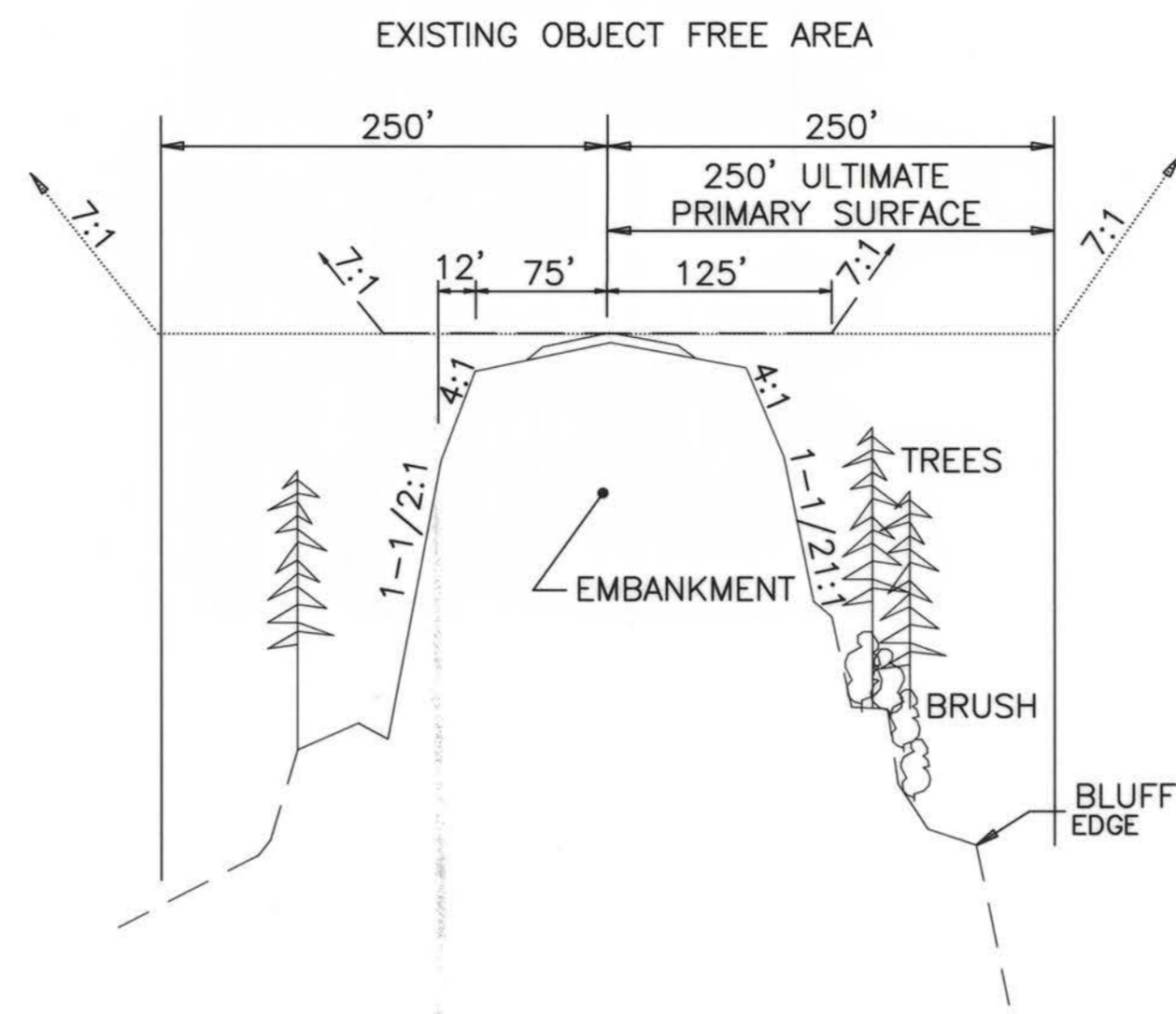
BY	DATE	REVISIONS	FAA

NULATO AIRPORT
 NULATO, ALASKA
 AIRPORT DATA & LAYOUT PLAN

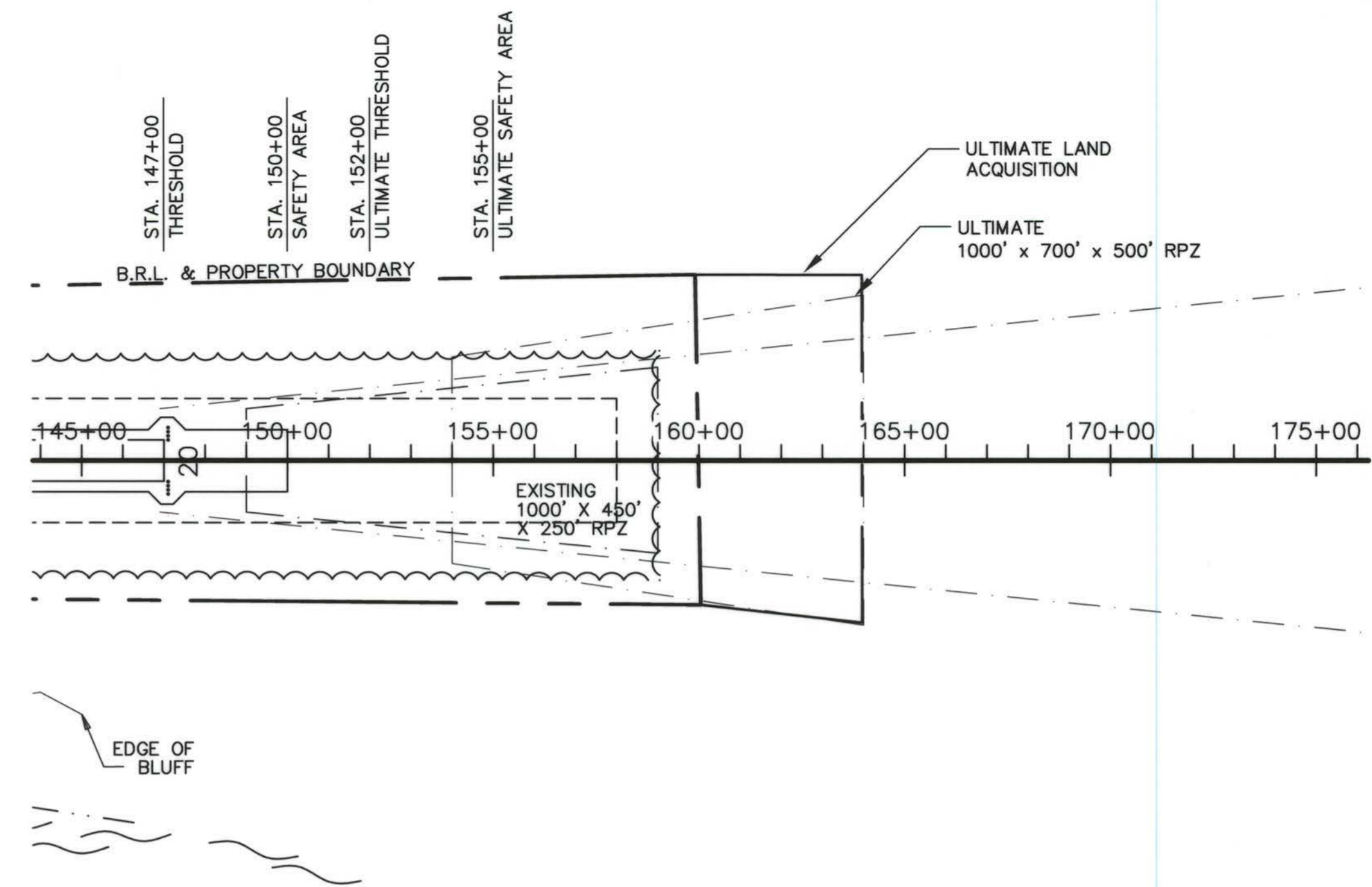
SHEET
2 OF
4



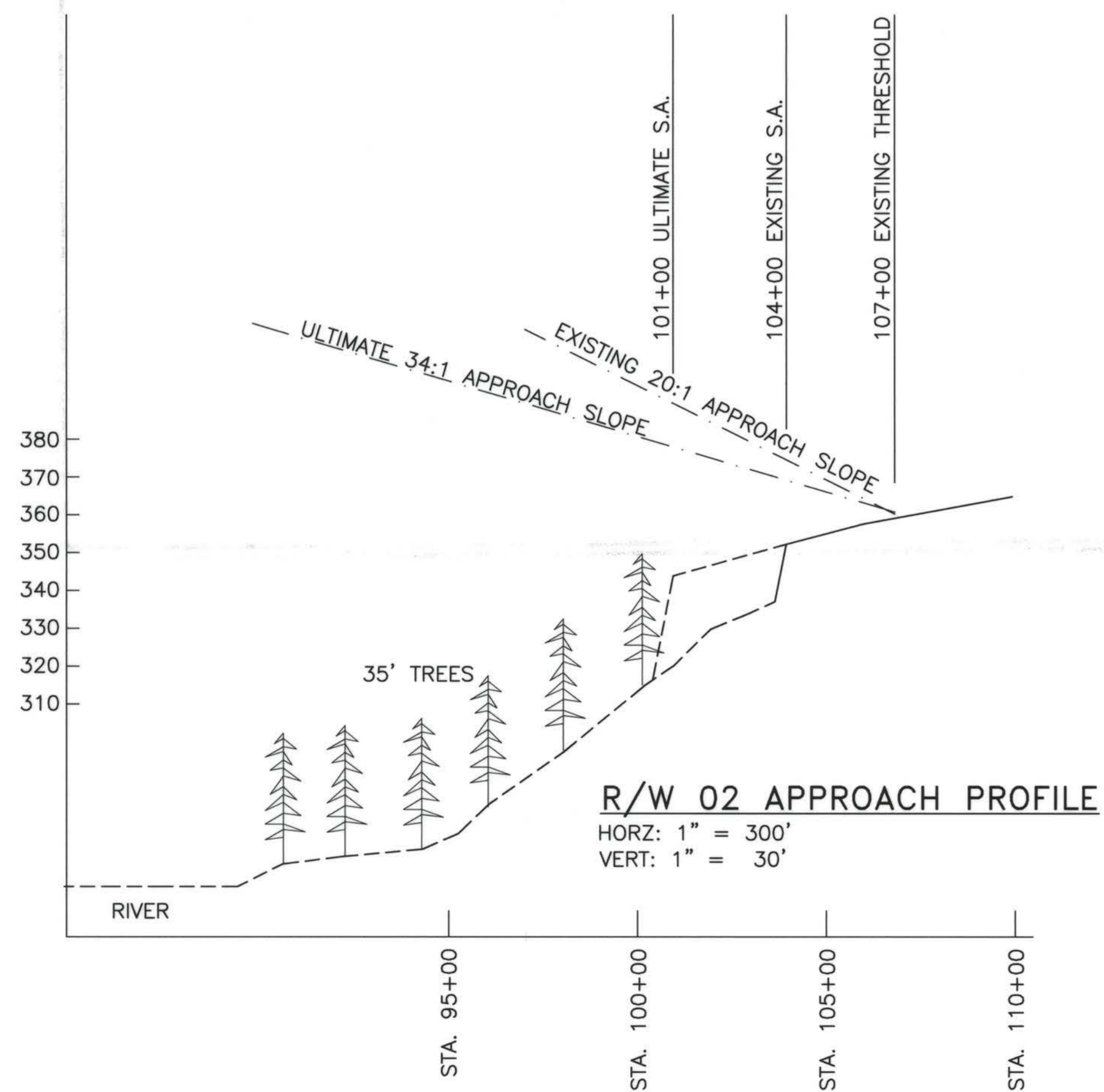
R/W 02 APPROACH PLAN



SECTION A - A

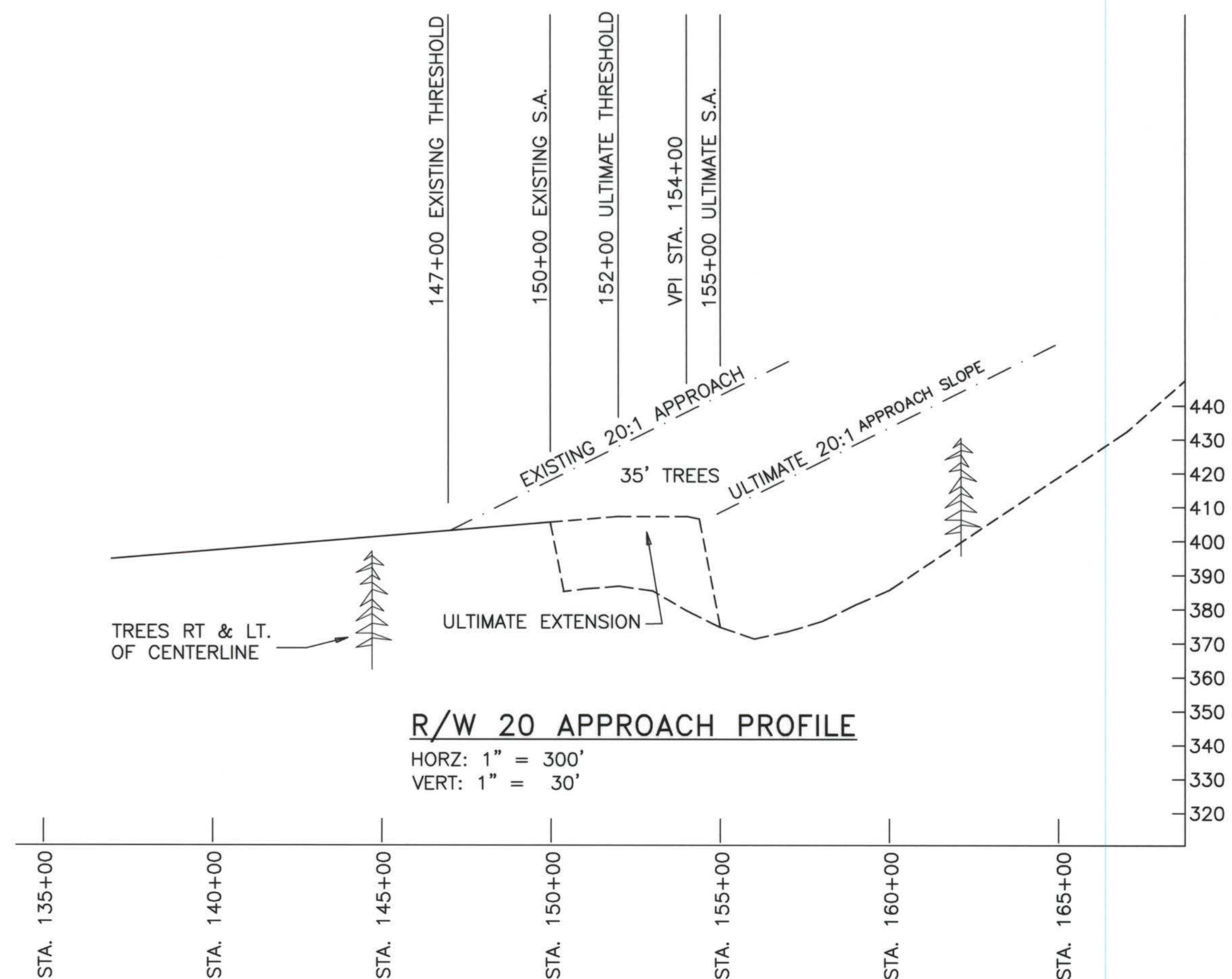


R/W 20 APPROACH PLAN



R/W 02 APPROACH PROFILE

HORZ: 1" = 300'
VERT: 1" = 30'



R/W 20 APPROACH PROFILE

HORZ: 1" = 300'
VERT: 1" = 30'

H:\Info_Communities\Nulato\02 ALP File\2014 AS-built\NUL_ALP-AV_ALP_Inner_Appr

DESIGN	CML
DRAWN	CAT
CHECKED	CML

STATE OF ALASKA
DEPARTMENT OF TRANSPORTATION AND PUBLIC FACILITIES
NORTHERN REGION-AVIATION

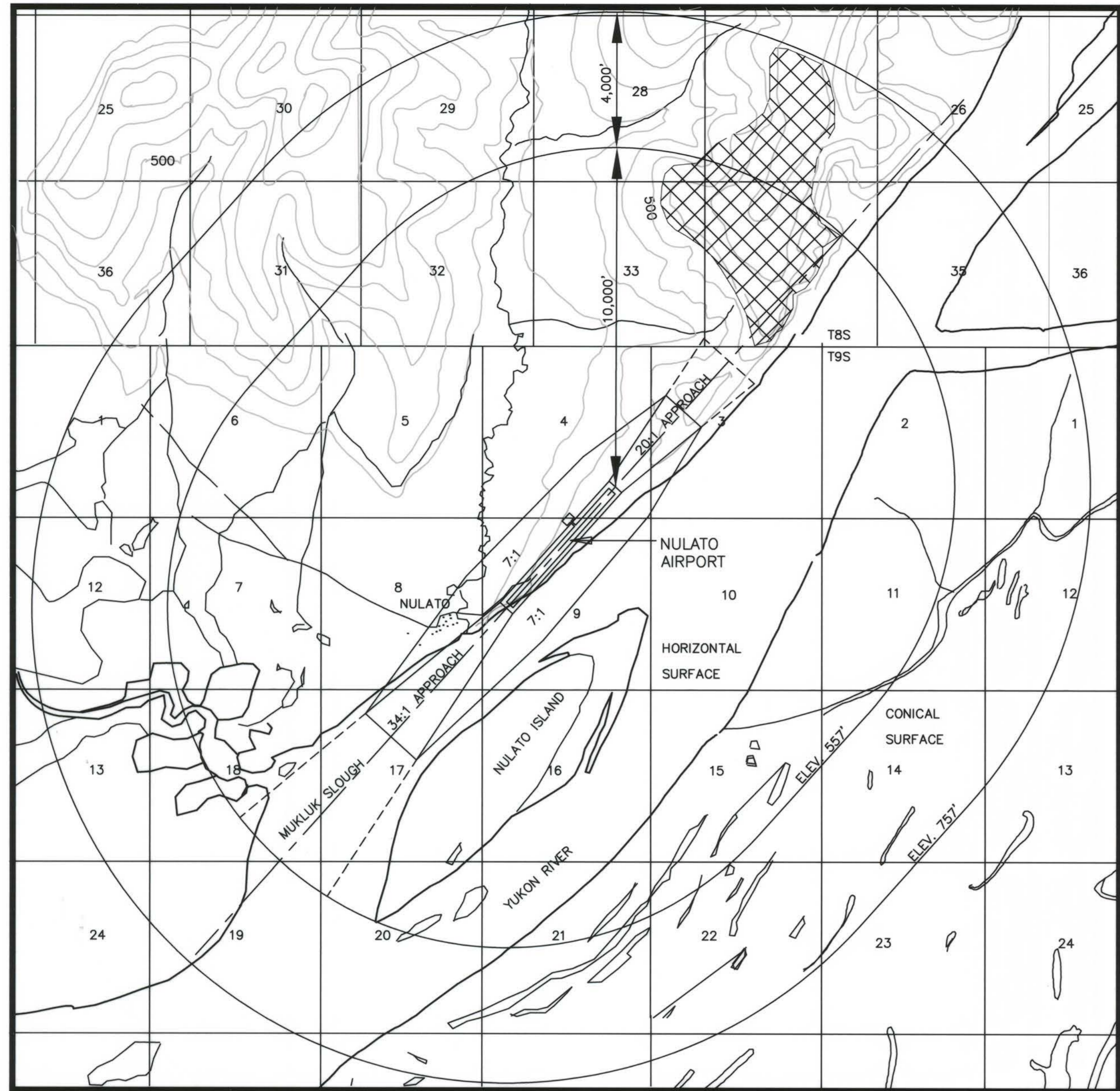
APPROVED: *Albert M.L. Beck* DATE: 7/23/15
ALBERT M.L. BECK, P.E. DESIGN GROUP CHIEF

DAP	7/15/15	AS-BUILT	
BY	DATE	REVISIONS	FAA

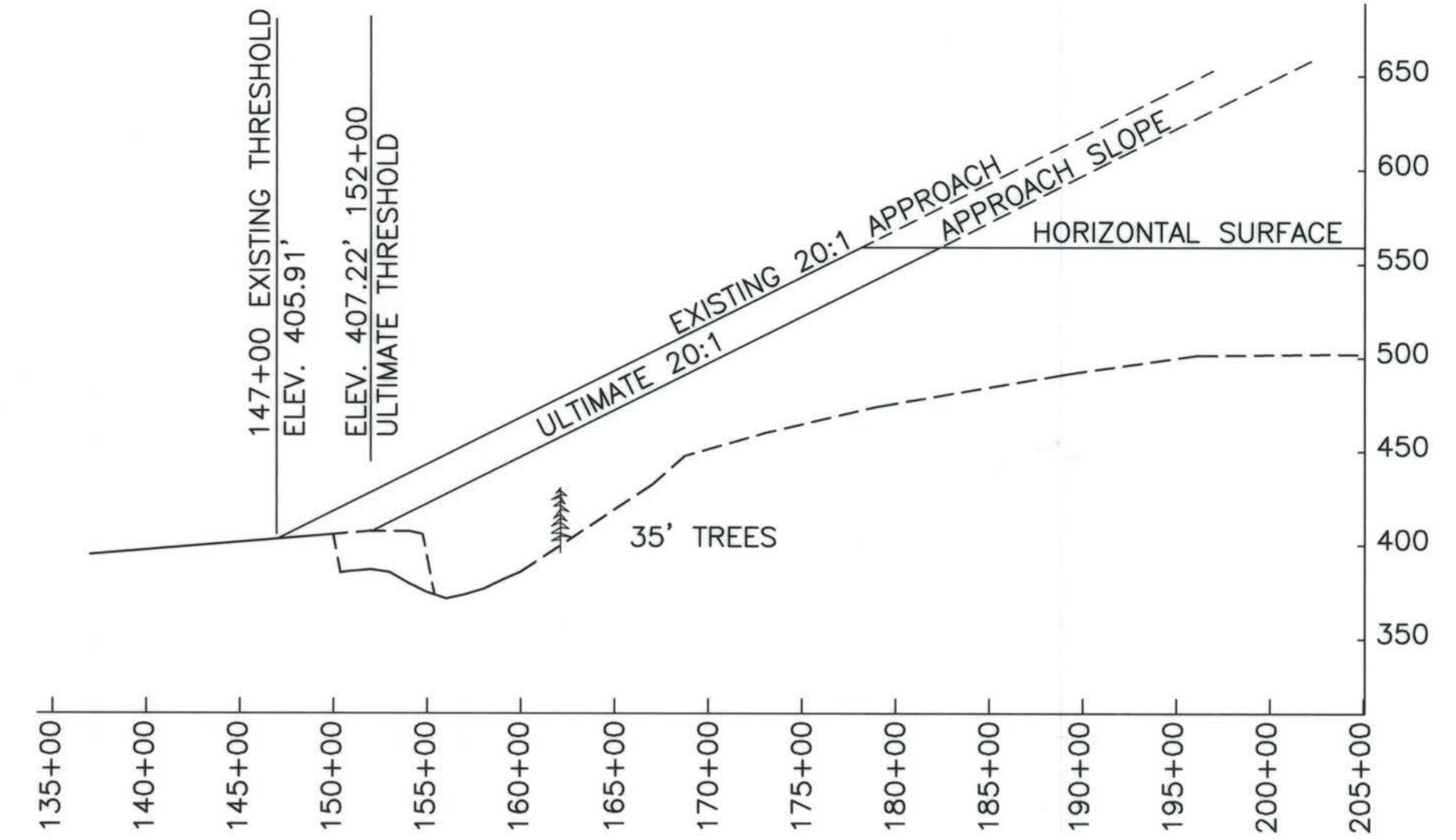
BY	DATE	REVISIONS	FAA
----	------	-----------	-----

NULATO AIRPORT
NULATO, ALASKA
INNER PORTION OF THE APPROACH SURFACES

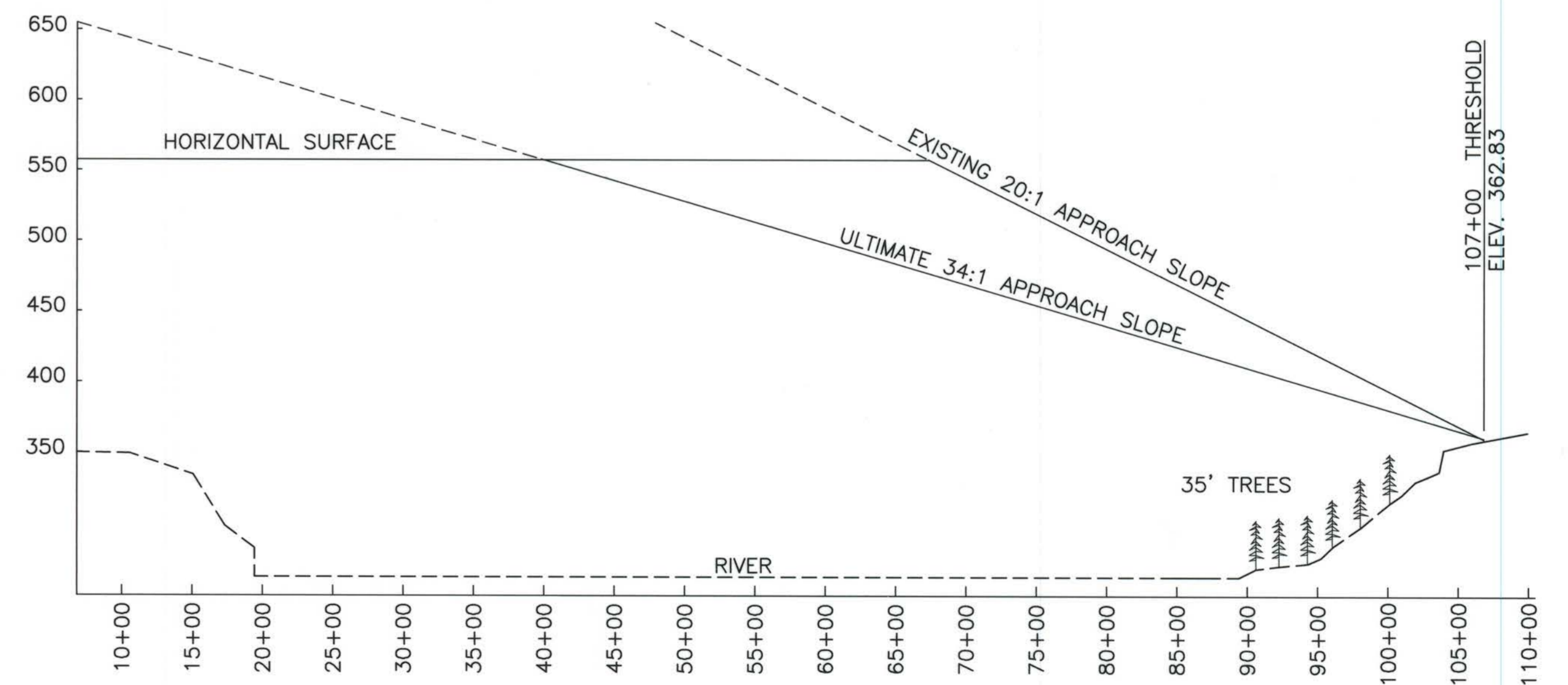
SHEET
3 OF 4



NOTE:
REFER TO THE INNER PORTION OF THE APPROACH SURFACE PLAN
VIEW DETAILS FOR CLOSE-IN OBSTRUCTIONS.



R/W 20 COMPOSITE APPROACH PROFILE



R/W 02 COMPOSITE APPROACH PROFILE

DESIGN CML
DRAWN CAT
CHECKED CML

STATE OF ALASKA
DEPARTMENT OF TRANSPORTATION AND PUBLIC FACILITIES
NORTHERN REGION-AVIATION
APPROVED: *Albert M.L. Beck* DATE 7/23/15
ALBERT M.L. BECK, P.E. DESIGN GROUP CHIEF

DAP	7/15/15	AS-BUILT	
BY	DATE	REVISIONS	FAA

BY	DATE	REVISIONS	FAA
----	------	-----------	-----

NULATO AIRPORT
NULATO, ALASKA
AIRSPACE & COMPOSITE APPROACH PROFILES

SHEET
4 OF
4