

RUNWAY DATA		
	EXISTING	ULTIMATE
% WIND COVERAGE	99.75%	SAME
INSTRUMENT RUNWAY	NONE	N.P.I.
APPROACH VISIBILITY MINIMUMS	1 MILE	SAME
APPROACH SURFACES	20:1	SAME
RUNWAY SURFACE TYPE	GRAVEL	SAME
PAVEMENT STRENGTH	N/A	SAME
RUNWAY LIGHTING	MIRL	SAME
RUNWAY MARKING	NONE	SAME
VISUAL APPROACH AIDS	NONE	SAME
RUNWAY DIMENSION	60'x4000'	SAME
RUNWAY SAFETY AREA	120'x4480'	SAME
RUNWAY OBJECT FREE AREA	400'x4480'	SAME
RUNWAY OBSTACLE FREE AREA	400'x4400'	SAME
TAXIWAY WIDTH	50'	SAME
T/W SAFETY AREA WIDTH	120'	SAME
T/W OBJECT FREE AREA WIDTH	89'	SAME

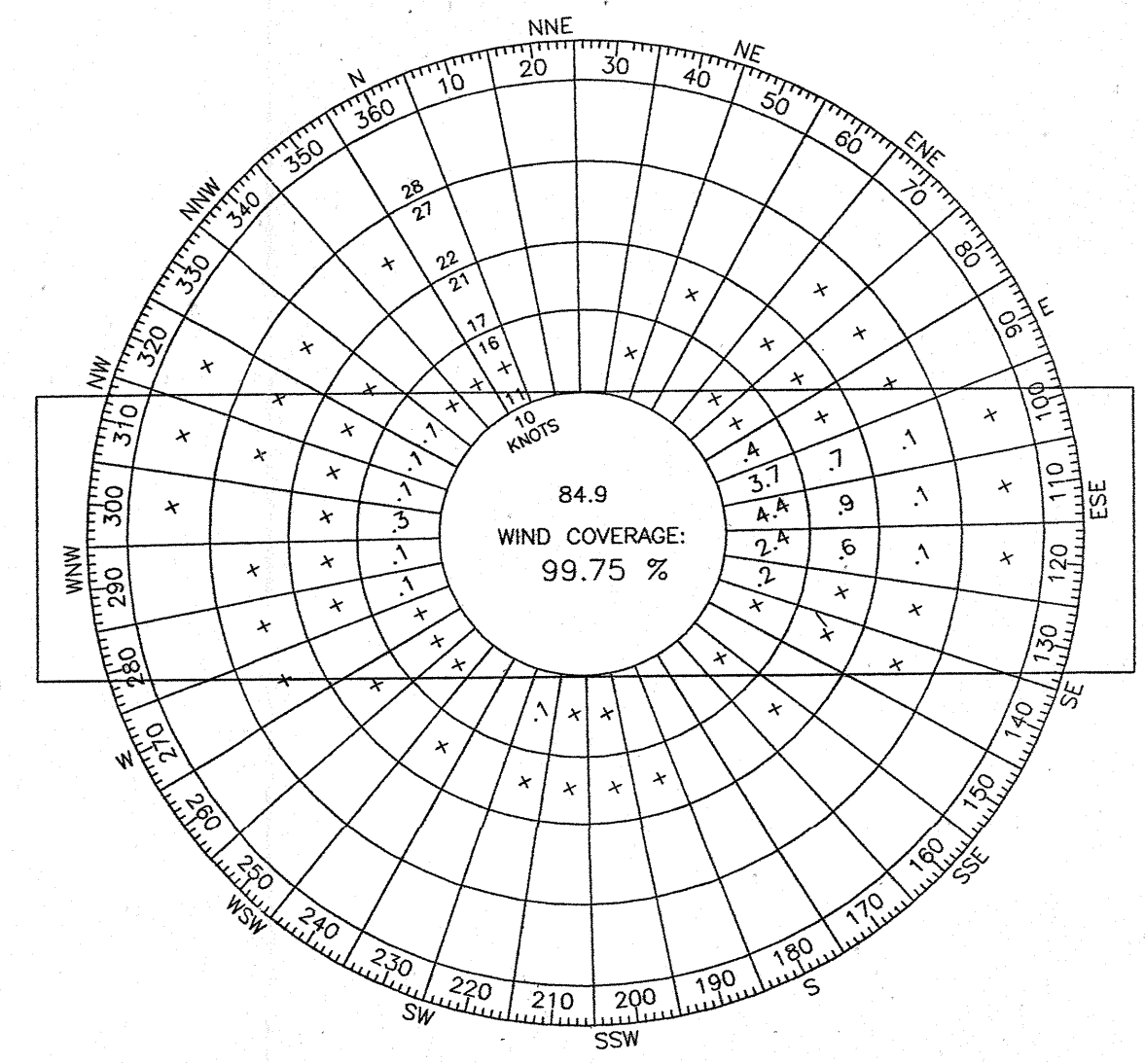
PENETRATIONS TO F.A.R. PART 77 SURFACES				
NO	DESCRIPTION	SURFACE	ELEVATION	PROPOSED DISPOSITION OF PENETRATION
①	ROAD TO LANDFILL	PRIMARY/TRANSITIONAL	VARIES	6.3' MAX. NO ACTION

AIRPORT DATA		
	EXISTING	ULTIMATE
AIRPORT ELEVATION (GPS)	197'	SAME
AIRPORT REFERENCE CODE	B 1	SAME
MEAN MAX. DAILY TEMP. HOTTEST MONTH	69°	SAME
TAXIWAY LIGHTING	MIRL	SAME
RAMP LIGHTING	FLOODLIGHT	SAME
NAVIGATION AIDS	BEACON	BEACON, GPS
COMMUNICATION AIDS	NONE	SAME
AIRPORT REFERENCE POINT	LAT. 66°53'17"N	
STA. 120+60	LONG. 157°09'45"W	
R/W 9 THRESHOLD	LAT. 66°53'25.88"N	
STA. 100+60	LONG. 157°10'29.44"W	
R/W 27 THRESHOLD	LAT. 66°53'08.27"N	
STA. 140+60	LONG. 157°08'59.85"W	

BUILDING TABLE	
STRUCTURE	ELEVATION
⑥ WINDCONE - LIGHTED	200'
⑦ WINDCONE - UNLIGHTED	200'
⑧ EQUIPMENT STORAGE BLDG.	209.5'
⑨ ELECTRICAL ENCLOSURE BLDG.	165.5'
⑩ ROTATING BEACON	217.6'
⑪ VILLAGE OF SHUNGNAK	202.3'

LEGEND		
	EXISTING	ULTIMATE
PROPERTY LINE	---	SAME
BUILDING RESTRICTION LINE (B.R.L.)	---	SAME
DEVELOPMENT	▭	SAME
AIRPORT REFERENCE POINT	⊙	SAME
ROTATING BEACON	⊙	SAME
BUILDINGS	▭	SAME
ROADWAYS	▭	SAME
THRESHOLD LIGHTS	⊙	SAME
WIND CONE WITH SEGMENTED CIRCLE	⊙	SAME
WATER (SHORELINE, PONDS, ETC.)	~~~~~	SAME
TREELINE	~~~~~	SAME

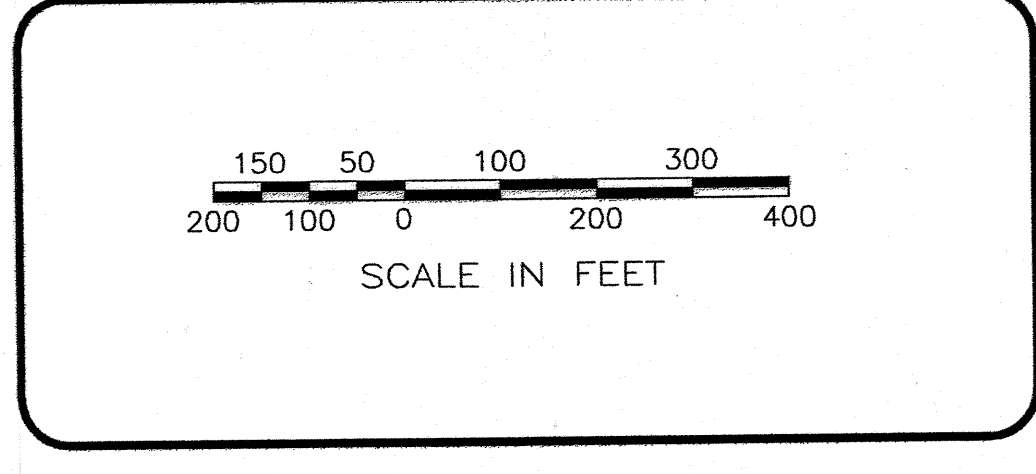
- NOTES:
- EXISTING ROAD AND STRUCTURE ELEVATIONS WERE ESTIMATED USING SPOT ELEVATIONS PROVIDED WITH AERIAL PHOTOGRAPHY.
 - THE GEOETIC COORDINATES CAME FROM CONTROLLED GPS WORK DONE BY LCMF, INC. IN 1998.
 - ALL COORDINATES ARE NAD 83.



DESIGN	M.J.M.			
DRAWN	CAT			
CHECKED	PKS			
BY	DATE	REVISIONS		

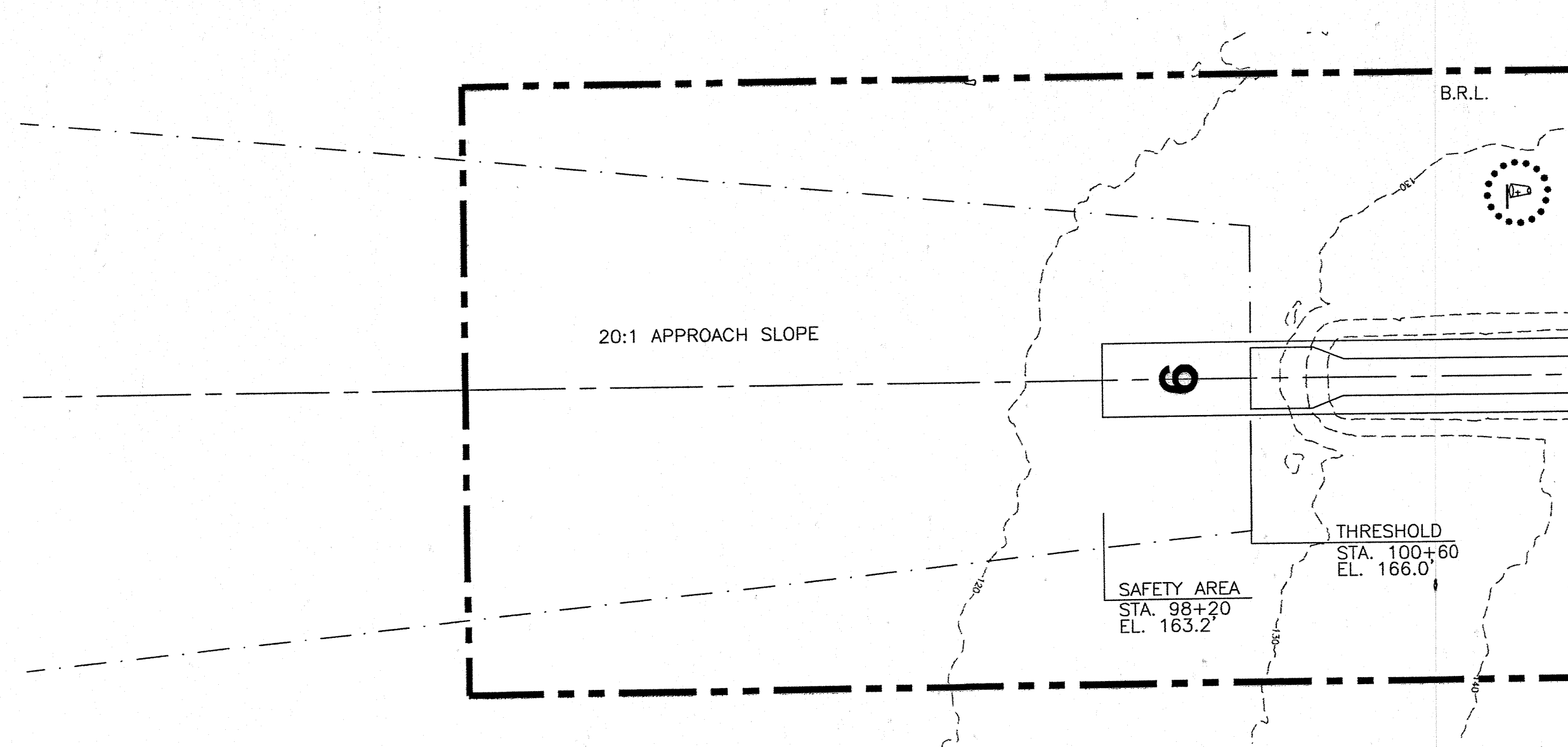
STATE OF ALASKA
DEPARTMENT OF TRANSPORTATION AND PUBLIC FACILITIES
NORTHERN REGION-DESIGN AND CONSTRUCTION-AVIATION
APPROVED
Patricia D. Miller DATE 9/15/09
PATRICIA D. MILLER, P.E. DESIGN GROUP CHIEF

REVISOR
AIRPORT LAYOUT PLAN APPROVED
BY LETTER DATED: 12/23
David S Stelling
AIRPORTS DIVISION,
ALASKAN REGION, AAL-620
AIRSPACE REVIEW #00AAL-174NRA

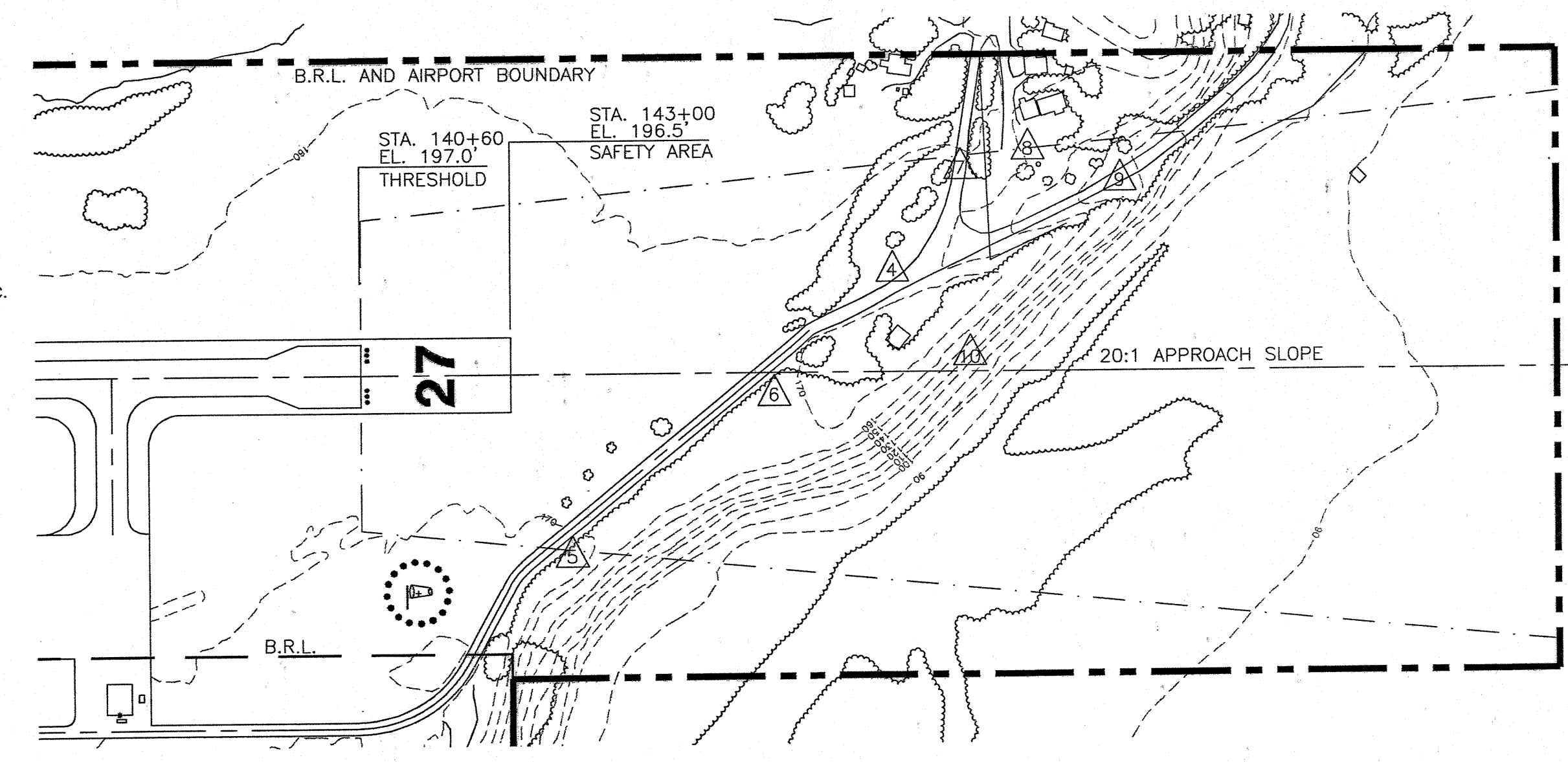


SHUNGNAK AIRPORT
AIRPORT LAYOUT PLAN

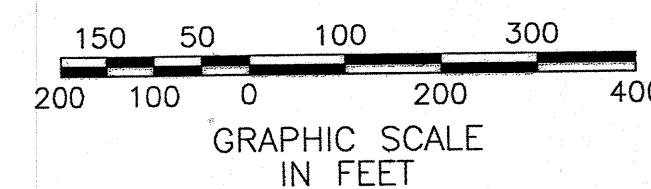
SHEET
1
OF
3



RUNWAY 9 INNER APPROACH PLAN

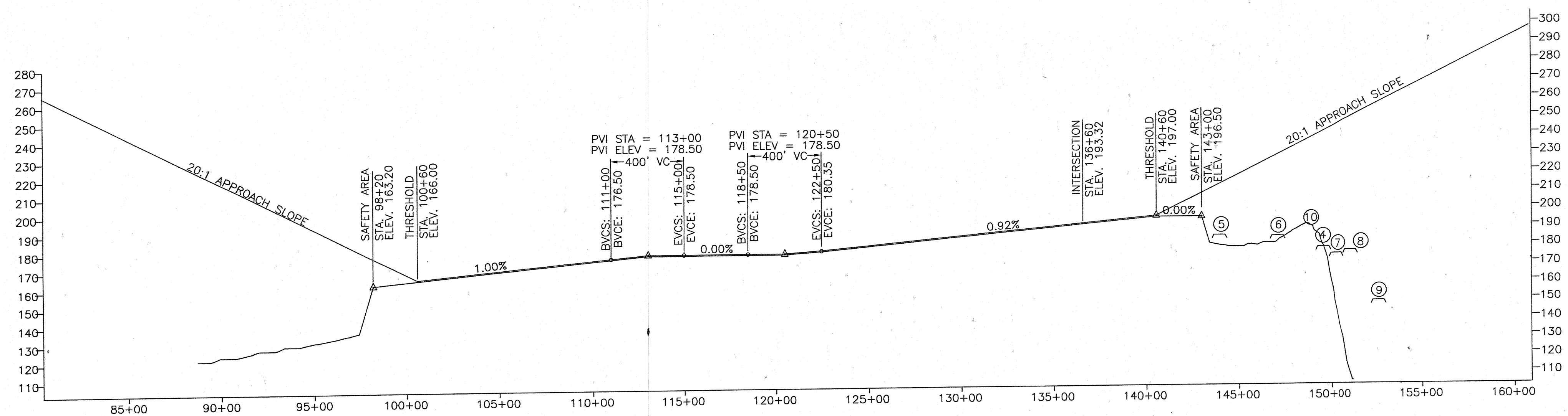


RUNWAY 27 INNER APPROACH PLAN



RUNWAY 9 RPZ OBSTRUCTION TABLE				
NO.	DESCRIPTION	ELEVATION	VERTICAL CLEARANCE TO APPROACH SLOPE	PROPOSED DISPOSITION OF OBSTRUCTION
NO OBSTRUCTIONS				

RUNWAY 27 RPZ OBSTRUCTION TABLE				
NO.	DESCRIPTION	ELEVATION	VERTICAL CLEARANCE TO APPROACH SLOPE	PROPOSED DISPOSITION OF OBSTRUCTION
④	ROAD, R/W STA. 149+60, 167' LT.	179'	57'	NO ACTION
⑤	ROAD, R/W STA. 143+93, 250' RT.	185.5'	17.1'	NO ACTION
⑥	ROAD, R/W STA. 146+98, ON C	186.6'	33.4'	NO ACTION
⑦	ROAD, R/W STA. 150+30, 365' LT.	176'	59'	NO ACTION
⑧	ROAD, R/W STA. 151+12, 377' LT.	178'	61'	NO ACTION
⑨	ROAD, R/W STA. 152+60, 302' LT.	150'	96'	NO ACTION



RUNWAY 9-27 PROFILE

DESIGN MJM
 DRAWN CAT
 CHECKED PKS

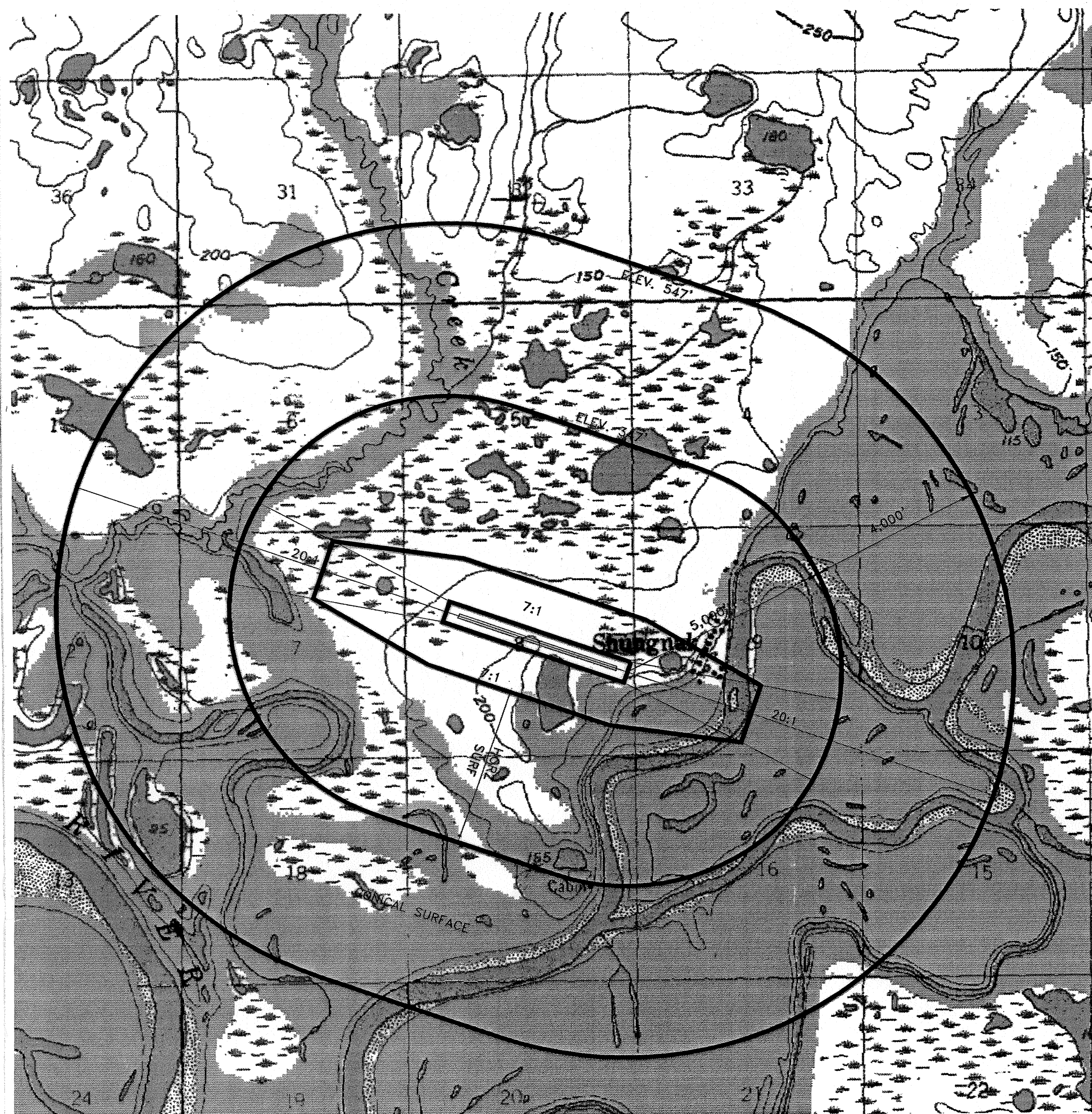
BY	DATE	REVISIONS

STATE OF ALASKA
 DEPARTMENT OF TRANSPORTATION AND PUBLIC FACILITIES
 NORTHERN REGION-DESIGN AND CONSTRUCTION-AVIATION
 APPROVED Patricia D. Miller DATE 9/15/00
 PATRICIA D. MILLER, P.E. DESIGN GROUP CHIEF

REVISED AIRPORT LAYOUT PLAN APPROVED
 BY LETTER DATED: 12/18/00
David Stelling
 AIRPORTS DIVISION,
 ALASKAN REGION, AAL-620

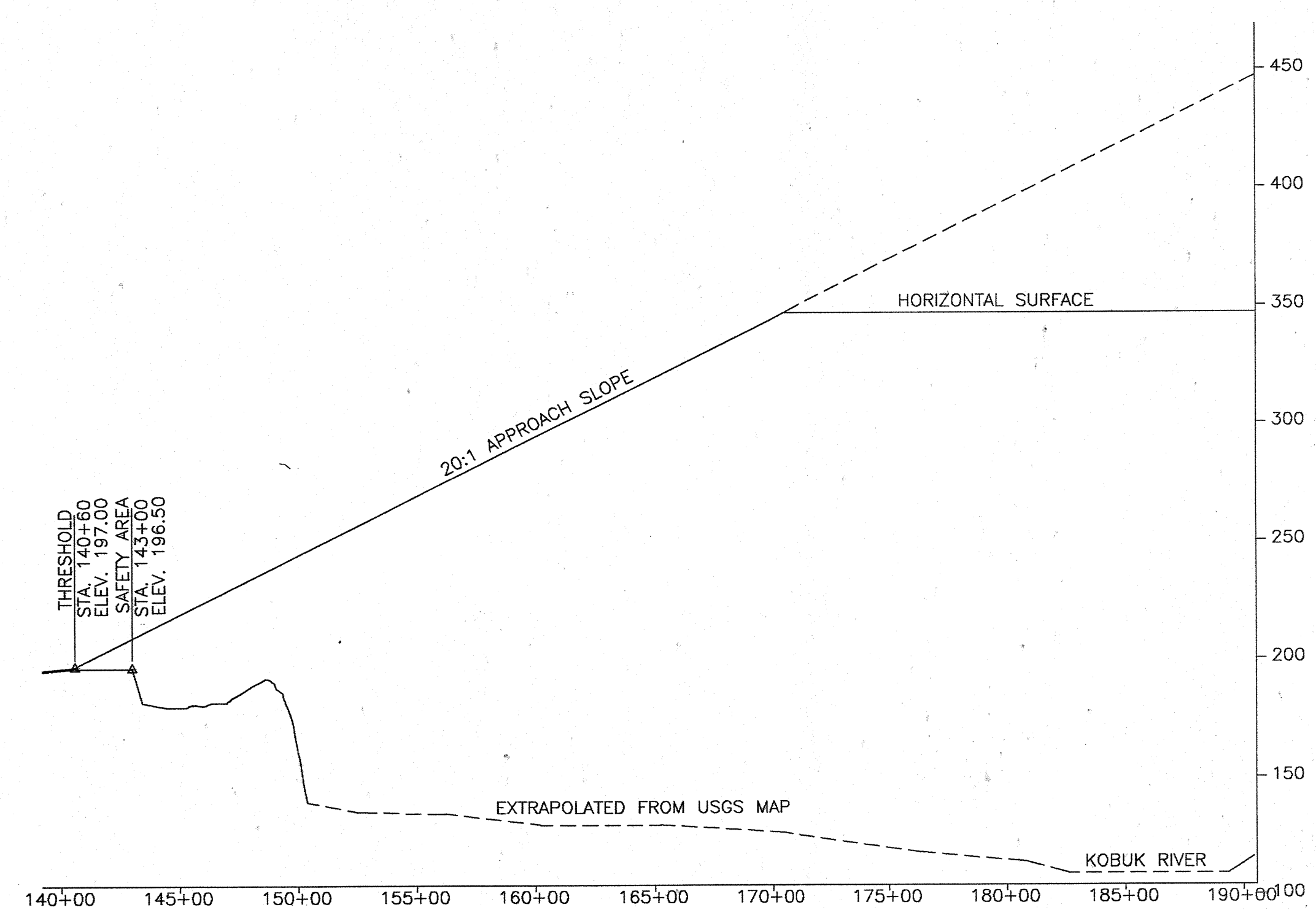
SHUNGNAK AIRPORT
 PROFILE AND
 INNER PORTION OF APPROACH PLAN

SHEET
 2 OF 3

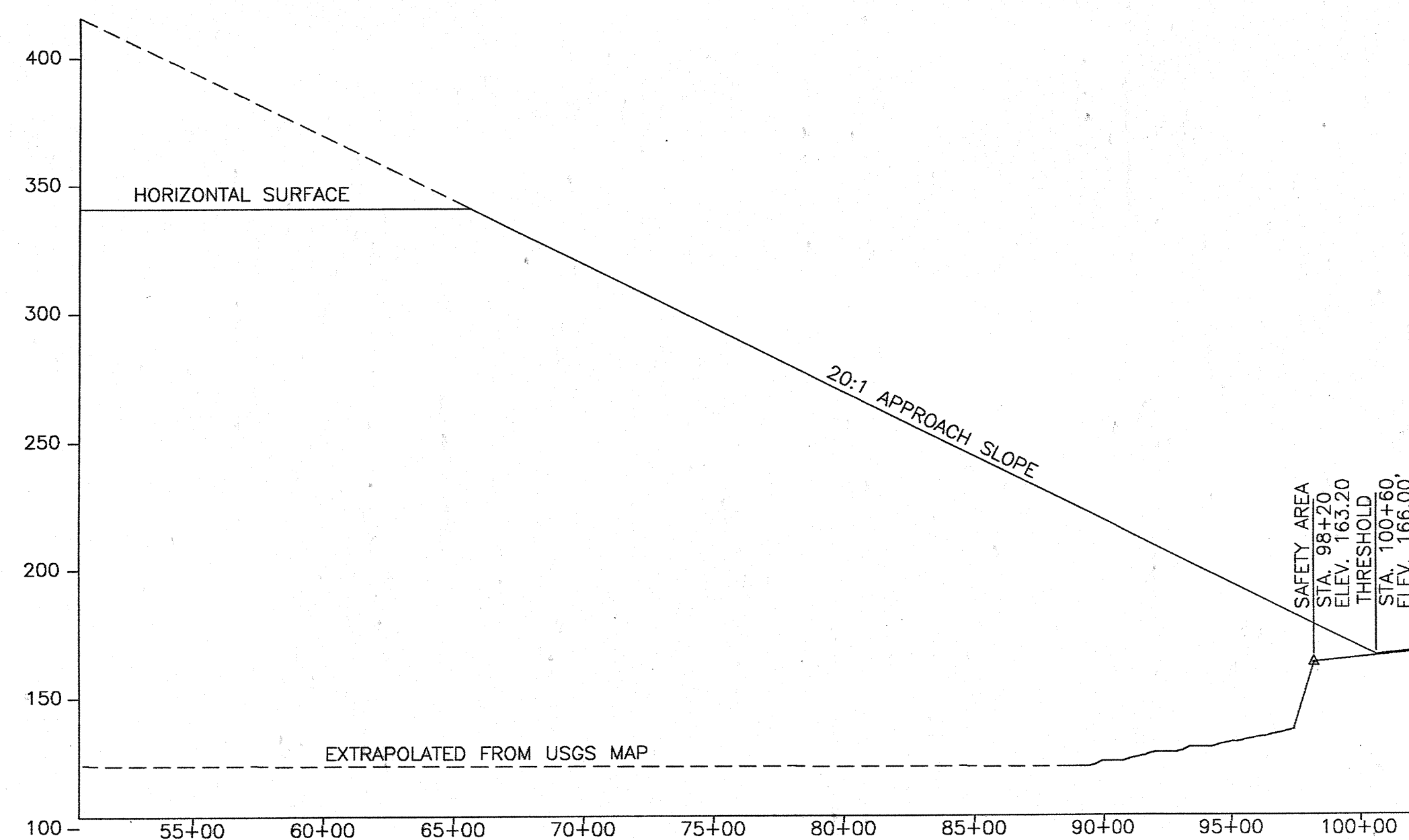


AIRSPACE VICINITY MAP

TOWNSHIP 17 NORTH, RANGE 8 EAST
 FOLIO K-8 KATEEL RIVER MERIDIAN
 USGS QUAD: SHUNGNAC D-3



RUNWAY 27 COMPOSITE APPROACH PROFILE



RUNWAY 9 COMPOSITE APPROACH PROFILE

DESIGN	M.J.M.		
DRAWN	CAT		
CHECKED	PKS		
BY	DATE	REVISIONS	

STATE OF ALASKA
 DEPARTMENT OF TRANSPORTATION AND PUBLIC FACILITIES
 NORTHERN REGION-DESIGN AND CONSTRUCTION-AVIATION

APPROVED *Patricia D. Miller* 9/15/00
 PATRICIA D. MILLER, P.E. DESIGN GROUP CHIEF

REVISOR AIRPORT LAYOUT PLAN APPROVED
 BY LETTER DATED: 12/18/00
David S. Stettin
 AIRPORTS DIVISION,
 ALASKAN REGION, AAL-620

SHUNGNAC AIRPORT
 AIRSPACE AND
 COMPOSITE APPROACH PROFILES

SHEET
 3 / OF 3