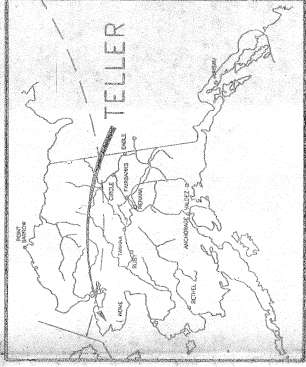
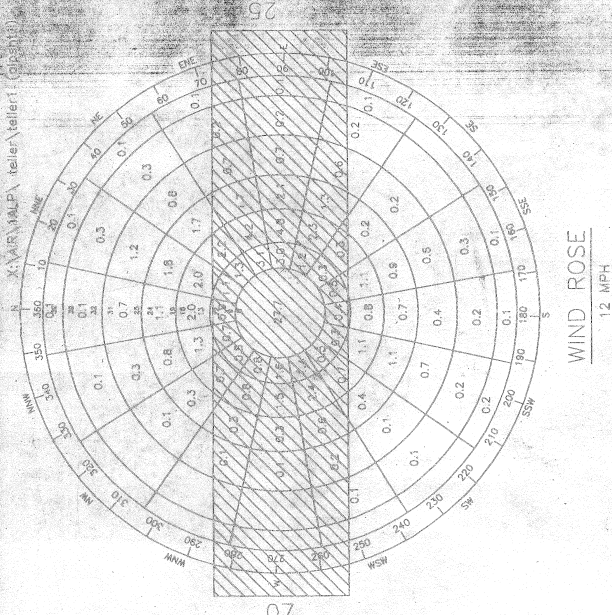


SCALE: 1" = 1 MILE
 TQS. 63.143 N 83.818 W
 KATEL RIVER MERIDIAN, ALASKA
 USGS TELLER (A-3) (8-3) 1950

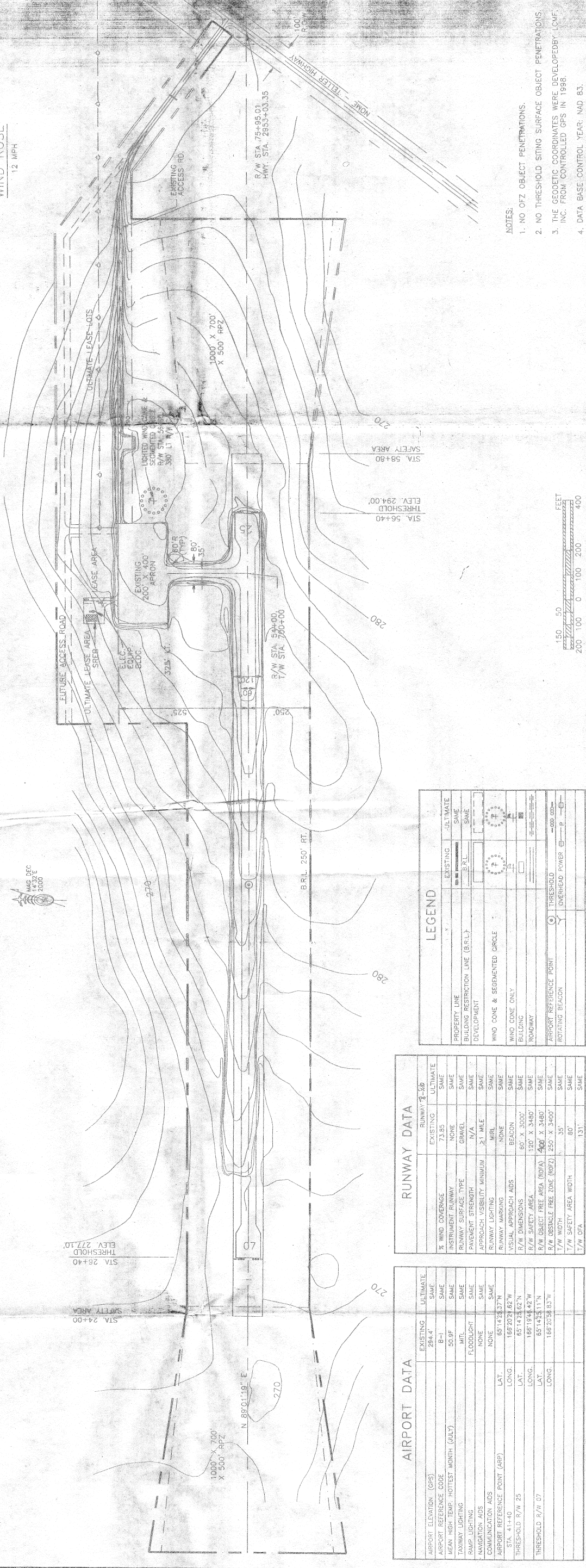


LOCATION MAP
 NO SCALE

WIND DATA
 PERCENT WIND COVERAGE
 73.85%
 WIND DATA PERIOD:
 1/2/46 - 3/31/63
 WIND DATA SOURCE:
 U.S. AIR FORCE CLIMATE CENTER



WIND ROSE
 12 MPH



AIRPORT DATA	
AIRPORT ELEVATION (GPS)	EXISTING: 284.4, ULTIMATE: SAME
AIRPORT REFERENCE CODE	B-1
MEAN HIGH TEMP. HOTTEST MONTH (JULY)	50.9F
TAXIWAY LIGHTING	MIL.
RAMP LIGHTING	FLOODLIGHT
NAVIGATION AIDS	NONE
COMMUNICATION AIDS	NONE
AIRPORT REFERENCE POINT (ARP)	65°42'37"N
STA. 41+40	186°20'42"W
THRESHOLD R/W 25	65°42'32"N
THRESHOLD R/W 07	186°18'48"W
THRESHOLD R/W 07	65°42'31"N
THRESHOLD R/W 07	186°20'58"W

RUNWAY DATA	
% WIND COVERAGE	EXISTING: 73.85, ULTIMATE: SAME
INSTRUMENT RUNWAY	NONE
RUNWAY SURFACE TYPE	GRAVEL
PAVEMENT STRENGTH	N/A
APPROACH VISIBILITY MINIMUM	>1 MILE
RUNWAY LIGHTING	MRL
RUNWAY MARKINGS	NONE
VISUAL APPROACH AIDS	BEACON
R/W DIMENSIONS	60' X 3000'
R/W SAFETY AREA	120' X 3480'
R/W OBSTACLE FREE AREA (ROFA)	200' X 3480'
R/W OBSTACLE FREE ZONE (OFZ)	250' X 3400'
T/W WIDTH	35'
T/W SAFETY AREA WIDTH	80'
T/W OFA	131'

LEGEND	
PROPERTY LINE	ULTIMATE
BUILDING RESTRICTION LINE (B.R.L.)	B.R.L.
DEVELOPMENT	SAME
WIND CONE & SEGMENTED CIRCLE	(Symbol)
WIND CONE ONLY	(Symbol)
BUILDING	(Symbol)
ROADWAY	(Symbol)
AIRPORT REFERENCE POINT	(Symbol)
ROTATING BEACON	(Symbol)
THRESHOLD	(Symbol)
OVERHEAD POWER	(Symbol)

DESIGN: JMW
 DRAWN: PAT
 CHECKED: PMS

BY	DATE	REVISIONS

STATE OF ALASKA
 DEPARTMENT OF TRANSPORTATION AND PUBLIC FACILITIES
 NORTHERN REGION - DESIGN AND ENGINEERING SERVICES
 APPROVED: *Patricia D. Miller* DATE: 9-26-07
 PATRICIA D. MILLER, P.E. DESIGN GROUP CHIEF

AIRPORT LAYOUT PLAN APPROVED
 BY LETTER DATED: 11-29-00
David S. Stalling
 AIRPORTS DIVISION,
 ALASKAN REGION, AAL-620
 AIRSPACE REVIEW #00AAK-12/04

THIS ALP HAS BEEN PREPARED FROM THE PREVIOUS ALP DATED 6/15/89 AND FAA APPROVED 6/28/89. FROM THE AS BUILT, DATED 9/7/81, FROM THE PROPERTY PLAN DATED 12/25/81, AND REVISED PCH 2/26/81, AND REVISED SURVEY DATA COLLECTED 9/30/88. THIS ALP SUPERCEDES ALP DATED 6/15/89 AND FAA APPROVED ON 6/28/89.

TELLER AIRPORT
 AIRPORT LAYOUT PLAN
 SHEET 1 OF 3

- NOTES:
1. NO OFZ OBJECT PENETRATIONS.
 2. NO THRESHOLD SITING SURFACE OBJECT PENETRATIONS.
 3. THE GEODETIC COORDINATES WERE DEVELOPED BY LCMF, INC. FROM CONTROLLED GPS IN 1988.
 4. DATA BASE-CONTROL YEAR: NAD 83.

