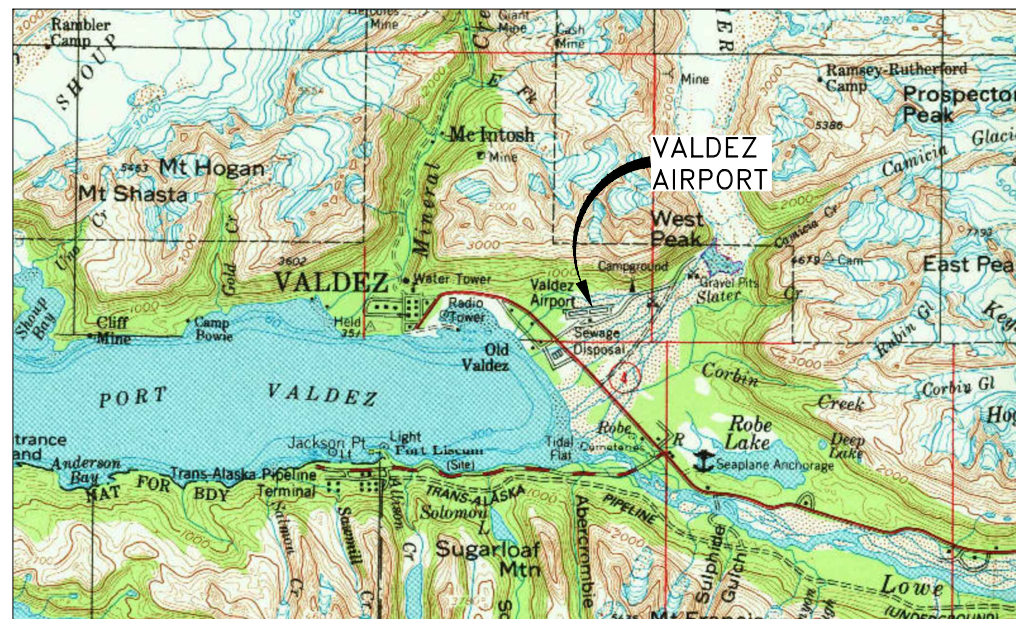




LOCATION MAP

VALDEZ PIONEER FIELD AIRPORT AIRPORT LAYOUT PLAN VALDEZ, ALASKA



VICINITY MAP

T8S, R6W
 COPPER RIVER MERIDIAN
 USGS VALDEZ A-7 NE AND A-6 NW, ALASKA

LEGEND		
ITEM	EXISTING	ULTIMATE
AIRPORT PROPERTY BOUNDARY	---	SAME
AIRPORT REFERENCE POINT	⊙	SAME
AWOS	△	SAME
BUILDING RESTRICTION LINE (B.R.L.)	— BRL —	SAME
EXISTING BUILDING	□	SAME
FENCE	--X--X--X--X--	SAME
GATE	⊙	SAME
PAPI	□□□□	■ ■ ■ ■
ROADWAYS	====	SAME
ROTATING BEACON	⊗	SAME
RUNWAY/TAXIWAY EDGE	---	---
RUNWAY SAFETY AREA (RSA)	— RSA —	— RSA —
RUNWAY OBSTACLE FREE ZONE (OFZ)	— OFZ —	— OFZ —
RUNWAY OBJECT FREE AREA (ROFA)	— OFA —	— OFA —
RUNWAY PROTECTION ZONE (RPZ)	— RPZ —	— RPZ —
SUPPLEMENTAL WIND CONE	⊚	SAME
SURFACES	---	---
SURVEY MONUMENT	⊕	SAME
THRESHOLD LIGHTS	•••• ••••	SAME
WIND CONE & SEGMENTED CIRCLE	⊚	SAME
REIL	⊕	SAME

SHEET INDEX	
SHEET NO.	DESCRIPTION
1	TITLE SHEET
2	AIRPORT DATA SHEET
3	EXISTING AIRPORT LAYOUT PLAN
4	ULTIMATE AIRPORT LAYOUT PLAN
5	EXISTING & ULTIMATE INNER APPROACH - RUNWAY 6
6	EXISTING INNER APPROACH - RUNWAY 24
7	ULTIMATE INNER APPROACH - RUNWAY 24
8	EXISTING & ULTIMATE DEPARTURE SURFACE
9	EXISTING & ULTIMATE PROFILES
10	AIRPORT AIRSPACE (FAR PART 77)
11	TERMINAL AREA PLAN
12	AIRPORT LAND USE
13	AIRPORT PROPERTY MAP

DESIGN MLH
 DRAWN MLH
 CHECKED JGL

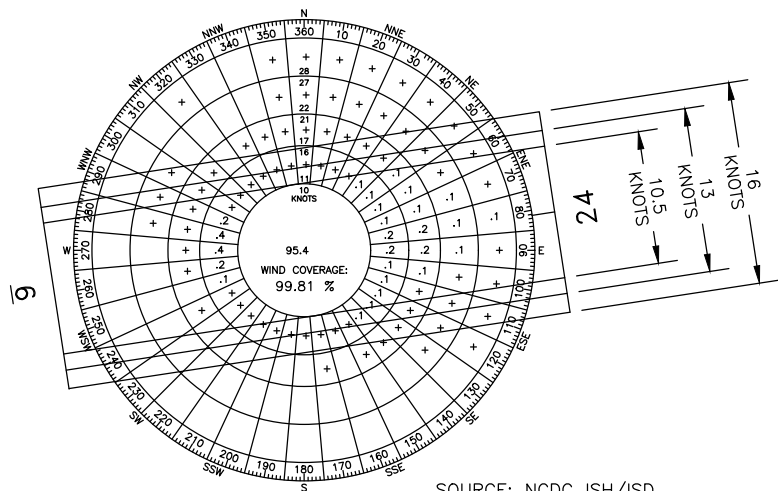
STATE OF ALASKA
 DEPARTMENT OF TRANSPORTATION AND PUBLIC FACILITIES
 NORTHERN REGION-AVIATION
 APPROVED: *Albert Beck* DATE 12/14/21
 ALBERT M.L. BECK, P.E. DESIGN GROUP CHIEF

AIRPORT LAYOUT PLAN CONDITIONAL APPROVAL SUBJECT TO
 ALP APPROVAL LETTER DATED 2/14/2022
 FAA AIRSPACE REVIEW NUMBER: 2021-AAL-342-NRA
 _____ DATE _____
 FAA, AIRPORTS DIVISION ALASKAN REGION, AAL- 615

BY	DATE	REVISIONS

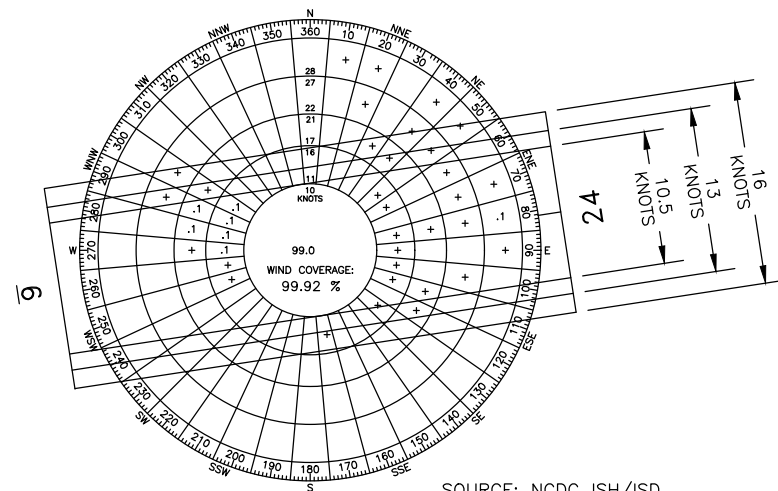
VALDEZ PIONEER FIELD
 VALDEZ, ALASKA
 TITLE SHEET

SHEET
 1 OF
 13



SOURCE: NCDC ISH/ISD
STATION NAME: VALDEZ PIONEER FIELD
PERIOD: 2010-2019

ALL WEATHER WIND DATA			
RUNWAY	10.5 kt	13 kt	16 kt
RW 6/24	99.34%	99.62%	99.81%



SOURCE: NCDC ISH/ISD
STATION NAME: VALDEZ PIONEER FIELD
PERIOD: 2010-2019

IFR WIND DATA			
RUNWAY	10.5 kt	13 kt	16 kt
RW 6/24	99.81%	99.89%	99.92%

GEOGRAPHIC COORDINATES

ITEM	EXISTING LATITUDE	EXISTING LONGITUDE	EXISTING ELEVATION	ULTIMATE LATITUDE	ULTIMATE LONGITUDE	ULTIMATE ELEVATION
ARP	61°08'03.19" N	146°14'41.16" W	90.23'	61°08'03.19" N	146°14'41.16" W	90.23'
THRESHOLD RW 06	61°07'58.34" N	146°15'46.59" W	57.38'	61°07'58.34" N	146°15'46.59" W	57.38'
THRESHOLD RW 24	61°08'08.05" N	146°13'35.74" W	127.98'	61°08'08.05" N	146°13'35.74" W	127.98'

PACS & SACS

PID	DESIGNATION	LATITUDE	LONGITUDE	ELLIPSOID HEIGHT	NORTHING	EASTING	ELEVATION	DESCRIPTION
DR6435	VDZ D	61°07'57.34" N	146°14'45.17" W	128.93'	2605959.53	1596954.88	76.33'	PACS
DR6436	VDZ E	61°07'54.60" N	146°15'48.95" W	98.20'	2605693.81	1593822.18	45.75'	SACS
DR6437	VDZ F	61°08'02.09" N	146°13'29.02" W	180.26'	2606428.39	1600695.85	127.43'	SACS

MODIFICATION OF STANDARDS

ITEM	EXISTING	STANDARD	ULTIMATE	AIRSPACE #	APPROVAL DATE
NONE REQUIRED					

NON-STANDARD CONDITIONS

ITEM	STANDARD	EXISTING	ULTIMATE
RUNWAY & TAXIWAY C INTERSECTION	OUTER THIRDS OF RW	MIDDLE THIRD OF RW	OUTER THIRD OF RW
RUNWAY 6 MARKING TYPE	NON-PRECISION	PRECISION	PRECISION
LANDFILL SEPARATION	10000'	3600'	10000'
WASTEWATER RETENTION & SETTLING PONDS SEPARATION	10000'	4000'	10000'

NOTES:

- THIS DRAWING SET IS A COMPILATION OF GROUND SURVEY AND AERIAL MAPPING DATA IN SUPPORT OF FAA AERONAUTICAL SURVEY VDZ-227651. GROUND SURVEY WAS PERFORMED BY STANTEC DURING OCTOBER 2018. AERIAL MAPPING WAS PERFORMED BY KODIAK MAPPING USING IMAGERY ACQUIRED ON AUGUST 29, 2018. ADDITIONAL AS-BUILT GROUND SURVEY FOR THE SEGMENTED CIRCLE AND SUPPLEMENTAL WIND CONE PERFORMED AUGUST, 2019.
- THE HORIZONTAL COORDINATE SYSTEM FOR THIS PROJECT IS NAD83 (2011) (EPOCH 2010) ALASKA STATE PLANE ZONE 3, IN U.S. SURVEY FEET. THE VERTICAL DATUM FOR THIS PROJECT IS NAVD88 USING GEOID12B.
- PREVIOUS ALP (2010) EXISTING AND ULTIMATE ARC LISTED AS C-III. RUNWAY 6-24 DIMENSIONS, SAFETY AREAS, AND CLEARING STANDARDS MEET C-III HOWEVER, EXISTING CRITICAL AIRCRAFT AND ARC ARE B-III.

AIRPORT DATA

ITEM	EXISTING	ULTIMATE
ICAO IDENTIFIER	PAVD	PAVD
NATIONAL AIRPORT IDENTIFIER	VDZ	VDZ
FAA SITE NUMBER	50825.1*A	50825.1*A
AIRPORT REFERENCE CODE (ARC)	B-III	B-III
NPIAS SERVICE LEVEL (P, CS, R, GA)	P	P
AASP CLASSIFICATION	REGIONAL	REGIONAL
AIRPORT ELEVATION (NAVD88)	128.0'	128.0'
MEAN MAX. TEMPERATURE, HOTTEST MONTH	54°F, JULY	54°F, JULY
MAGNETIC DECLINATION, YEAR, RATE OF CHANGE	16°47' E, 2020, 0°14" W/YEAR	16°47' E, 2020, 0°14" W/YEAR
AIRPORT AND TERMINAL NAVIGATION AIDS	ROTATING BEACON, LIGHTED WIND CONE, SEGMENTED CIRCLE, NDB	ROTATING BEACON, LIGHTED WIND CONE, SEGMENTED CIRCLE, NDB
COMMUNICATION AIDS	RCO	RCO
MISCELLANEOUS FACILITIES	SUPPLEMENTAL WIND CONE, WEATHER STATION, WX CAM	SUPPLEMENTAL WIND CONE, WEATHER STATION, WIND SENSOR, WX CAM

MAGNETIC DECLINATION SOURCE: NOAA NATIONAL CENTERS FOR ENVIRONMENTAL INFORMATION

RUNWAY DATA

ITEM	EXISTING	ULTIMATE
RUNWAY IDENTIFICATION	6-24	6-24
FAR PART 77 APPROACH CATEGORY (UTILITY, OTHER THAN UTILITY)	OTHER THAN UTILITY	OTHER THAN UTILITY
FAR PART 77 APPROACH TYPE (V, C, NPA, PA)	C	C
RUNWAY DESIGN CODE (RDC)	B-III-5000	B-III-5000
APPROACH RUNWAY REFERENCE CODE (APRC)	D/VI/5000	D/VI/5000
DEPARTURE RUNWAY REFERENCE CODE (DPRC)	D/VI	D/VI
CRITICAL AIRCRAFT	DE HAVILLAND DHC8-100	DE HAVILLAND DHC8-100
FAR PART 77 APPROACH SLOPE	RW 06: 34:1 RW 24: 20:1	RW 06: 34:1 RW 24: 34:1
APPROACH THRESHOLD SITING SURFACE (TSS) SLOPE	20:1	20:1
RUNWAY DEPARTURE SURFACE	YES	YES
RUNWAY SURFACE	ASPHALT	ASPHALT
PAVEMENT STRENGTH	SINGLE WHEEL (S)	kg (lb.)
	DUAL WHEEL (DW)	kg (lb.)
	DUAL TANDEM (DTW)	kg (lb.)
PAVEMENT STRENGTH BY PCN	54 /F/B/X/T	54 /F/B/X/T
TRUE MEAN BEARING	N 81°16'52.3" E	N 81°16'52.3" E
MAXIMUM ELEVATION (NAVD88)	128.0'	128.0'
EFFECTIVE RUNWAY GRADIENT	1.09%	1.09%
RUNWAY TOUCHDOWN ZONE ELEVATION (NAVD88)	RW 06: 87.2' RW 24: 128.0'	RW 06: 87.2' RW 24: 128.0'
RUNWAY DIMENSIONS	150'x6500'	100'x6500'
RUNWAY SAFETY AREA (RSA) DIMENSIONS	300'x7700'	300'x7700'
RSA LENGTH BEYOND RW END	600'	600'
RUNWAY PROTECTION ZONE (RPZ)	500'x700'x1000'	500'x700'x1000'
RUNWAY OBJECT FREE AREA (ROFA)	800'x7700'	800'x7700'
ROFA LENGTH BEYOND RW ENDS	600'	600'
RUNWAY OBSTACLE FREE ZONE (ROFZ)	400'x6900'	400'x6900'
RUNWAY LIGHTING TYPE	HIRL	HIRL
RUNWAY MARKING TYPE (NONE, V, NP, P)	RW 06: P RW 24: NP	RW 06: P RW 24: NP
VISIBILITY MINIMUMS	NLT 1 SM	NLT 1 SM
VISUAL AND INSTRUMENT NAVAIDS	RW 06: PAPI, LDA/DME, MALSR RW 24: REIL	RW 06: PAPI, LDA/DME, MALSR RW 24: PAPI, REIL
TYPE AERONAUTICAL SURVEY REQUIRED	NVG	NVG

DESIGN MLH
DRAWN MLH
CHECKED JGL

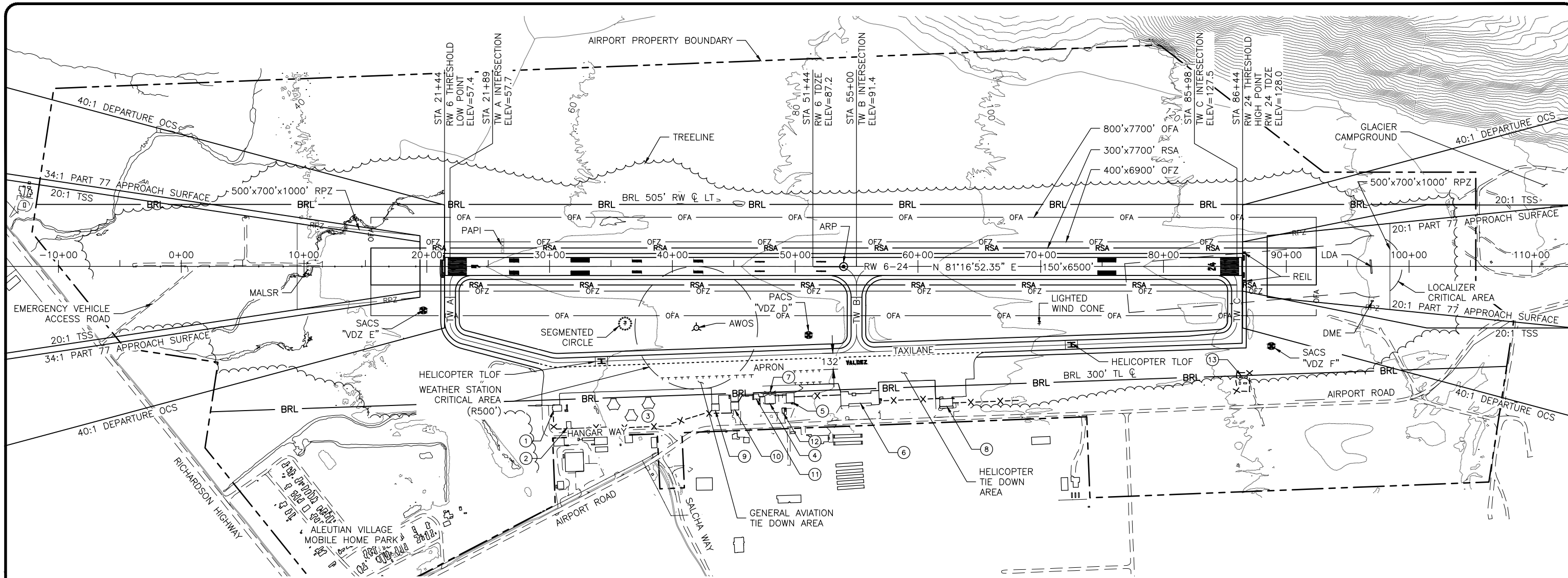
STATE OF ALASKA
DEPARTMENT OF TRANSPORTATION AND PUBLIC FACILITIES
NORTHERN REGION-AVIATION
APPROVED: *Albert Beck* DATE 12/14/21
ALBERT M.L. BECK, P.E. DESIGN GROUP CHIEF

BY	DATE	NO.	REVISIONS	FAA

BY	DATE	NO.	REVISIONS	FAA

VALDEZ PIONEER FIELD
VALDEZ, ALASKA
AIRPORT DATA SHEET

SHEET
2 OF
13



BUILDING DATA TABLE

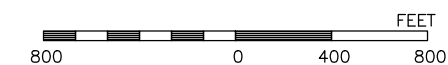
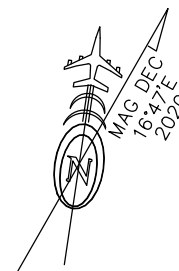
#	STRUCTURE NAME	STATION/OFFSET	REMARKS
1	HANGAR	STA 30+61/1127' RT	NO PENETRATION
2	OFFICE	STA 31+55/1262' RT	NO PENETRATION
3	HEXAGON HANGARS	STA 34+24/1065' RT	NO PENETRATION
4	ARFF	STA 47+94/1034' RT	NO PENETRATION
5	SREB	STA 49+60/1028' RT	NO PENETRATION
6	AIRPORT TERMINAL	STA 52+93/1036' RT	NO PENETRATION
7	ROTATING BEACON	STA 47+94/1034' RT	NO PENETRATION
8	ERA OFFICE	STA 62+41/1075' RT	NO PENETRATION
9	CIVIL AIR PATROL	STA 43+49/1119' RT	NO PENETRATION
10	VALDEZ AERO SERVICES, INC.	STA 45+07/1104' RT	NO PENETRATION
11	SAND STORAGE SHED	STA 46+74/1039' RT	NO PENETRATION
12	UREA STORAGE SHED	STA 49+02/1153' RT	NO PENETRATION
13	FAA BUILDINGS	STA 86+34/889' RT	NO PENETRATION

TAXIWAY DATA TABLE

ITEM	TW A/B/C	TAXILANE
AIRPLANE DESIGN GROUP (ADG)	III	III
TAXIWAY DESIGN GROUP (TDG)	3	3
TAXIWAY DIMENSIONS	90'	75'
TAXIWAY EDGE SAFETY MARGIN (TESM)	10'	10'
TAXIWAY SHOULDER WIDTH	30'	37.5'
TAXIWAY SAFETY AREA (TSA) WIDTH	118'	118'
TAXIWAY OBJECT FREE AREA (TOFA) WIDTH	186'	162'
TAXIWAY MARKING	PART 139	PART 139
TAXIWAY LIGHTING	MITL	MITL

NOTE:

1. NO OFZ PENETRATIONS.
2. MINIMUM RUNWAY CENTERLINE TO PARALLEL TAXILANE CENTERLINE SEPARATION DISTANCE IS 595'.
3. SEE SHEET 9 FOR EXISTING RUNWAY PROFILE.



DESIGN MLH
 DRAWN MLH
 CHECKED JGL

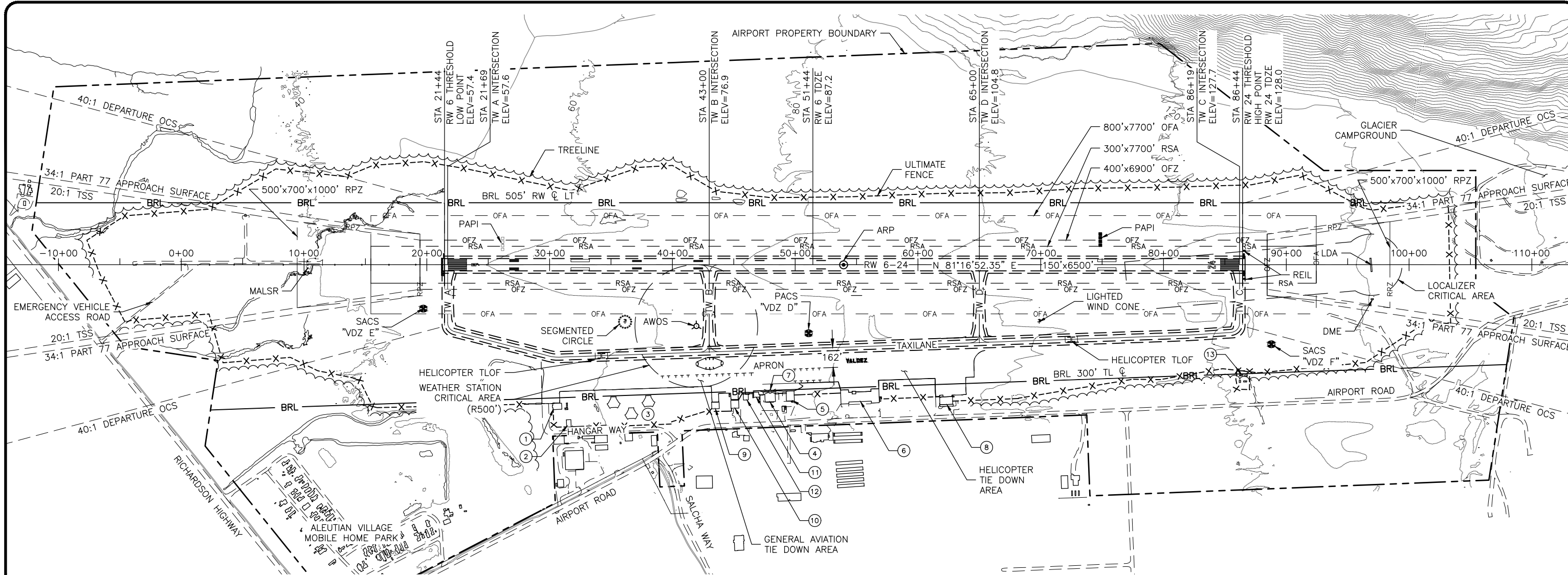
STATE OF ALASKA
 DEPARTMENT OF TRANSPORTATION AND PUBLIC FACILITIES
 NORTHERN REGION-AVIATION
 APPROVED: *Albert Beck* DATE 12/14/21
 ALBERT M.L. BECK, P.E. DESIGN GROUP CHIEF

BY	DATE	NO.	REVISIONS	FAA

BY	DATE	NO.	REVISIONS	FAA

VALDEZ PIONEER FIELD
 VALDEZ, ALASKA
 EXISTING AIRPORT LAYOUT PLAN

SHEET
 3 OF
 13



BUILDING DATA TABLE

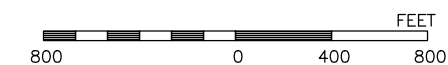
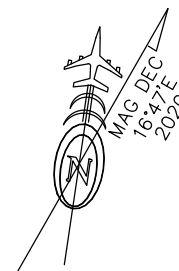
#	STRUCTURE NAME	STATION/OFFSET	REMARKS
1	HANGAR	STA 30+61/1127' RT	NO PENETRATION
2	OFFICE	STA 31+55/1262' RT	NO PENETRATION
3	HEXAGON HANGARS	STA 34+24/1065' RT	NO PENETRATION
4	ARFF	STA 47+94/1034' RT	NO PENETRATION
5	SREB	STA 49+60/1028' RT	NO PENETRATION
6	AIRPORT TERMINAL	STA 52+93/1036' RT	NO PENETRATION
7	ROTATING BEACON	STA 47+94/1034' RT	NO PENETRATION
8	ERA OFFICE	STA 62+41/1075' RT	NO PENETRATION
9	CIVIL AIR PATROL	STA 43+49/1119' RT	NO PENETRATION
10	VALDEZ AERO SERVICES, INC.	STA 45+07/1104' RT	NO PENETRATION
11	UREA STORAGE SHED	STA 46+74/1039' RT	NO PENETRATION
12	SAND STORAGE SHED	STA 46+00/1041' RT	NO PENETRATION
13	FAA BUILDINGS	STA 86+34/889' RT	NO PENETRATION

TAXIWAY DATA TABLE

ITEM	TW A/B/C/D	TAXILANE
AIRPLANE DESIGN GROUP (ADG)	III	III
TAXIWAY DESIGN GROUP (TDG)	3	3
TAXIWAY DIMENSIONS	50	50
TAXIWAY EDGE SAFETY MARGIN (TESM)	10'	10'
TAXIWAY SHOULDER WIDTH	20	20
TAXIWAY SAFETY AREA (TSA) WIDTH	118'	118'
TAXIWAY OBJECT FREE AREA (TOFA) WIDTH	186'	162'
TAXIWAY MARKING	PART 139	PART 139
TAXIWAY LIGHTING	MITL	MITL

NOTE:

1. NO OFZ PENETRATIONS.
2. MINIMUM RUNWAY CENTERLINE TO PARALLEL TAXILANE CENTERLINE SEPARATION DISTANCE IS 595'.
3. SEE SHEET 9 FOR ULTIMATE RUNWAY PROFILE.



DESIGN MLH
DRAWN MLH
CHECKED JGL

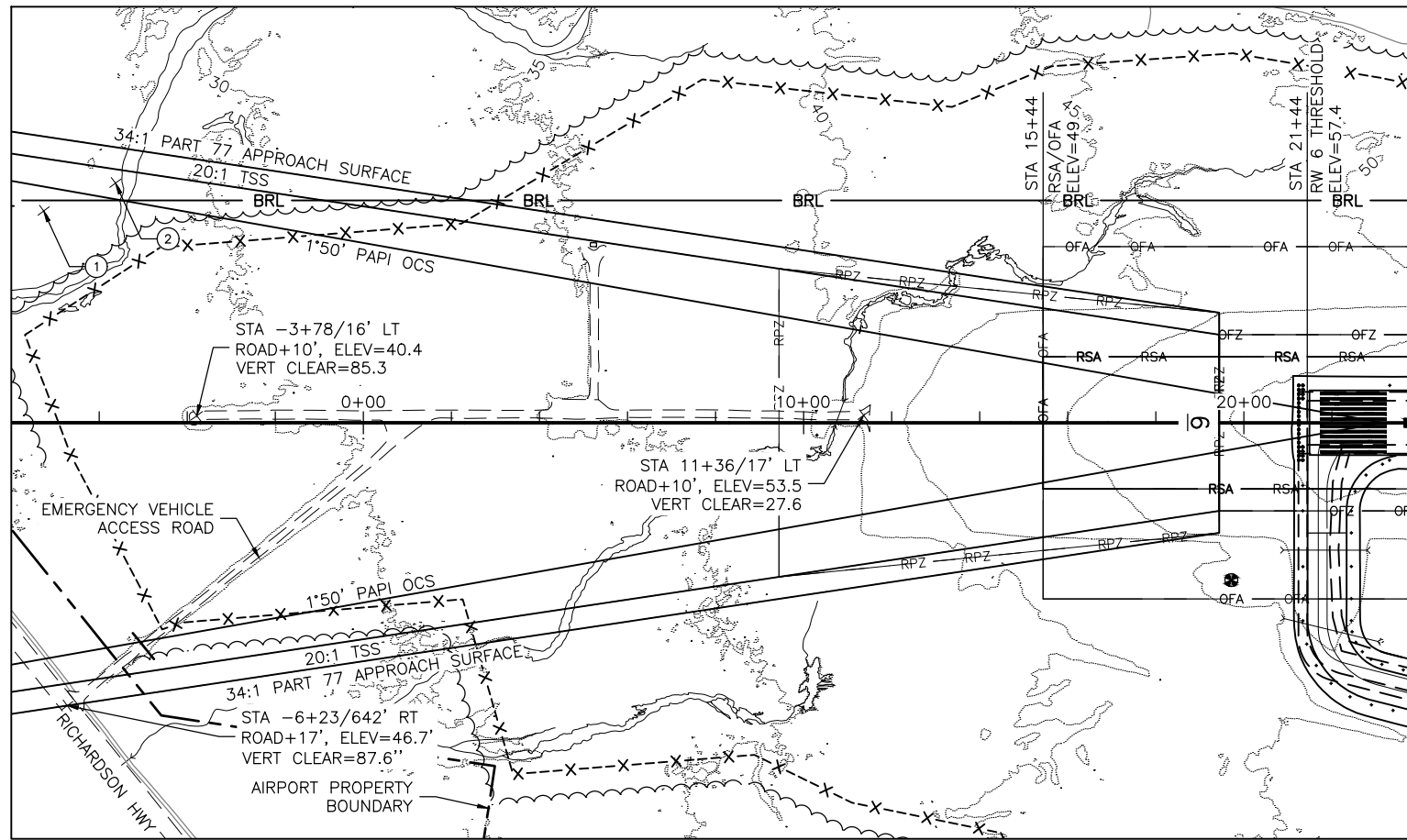
STATE OF ALASKA
DEPARTMENT OF TRANSPORTATION AND PUBLIC FACILITIES
NORTHERN REGION-AVIATION
APPROVED: *Albert Beck* DATE 12/14/21
ALBERT M.L. BECK, P.E. DESIGN GROUP CHIEF

BY	DATE	NO.	REVISIONS	FAA

BY	DATE	NO.	REVISIONS	FAA

VALDEZ PIONEER FIELD
VALDEZ, ALASKA
ULTIMATE AIRPORT LAYOUT PLAN

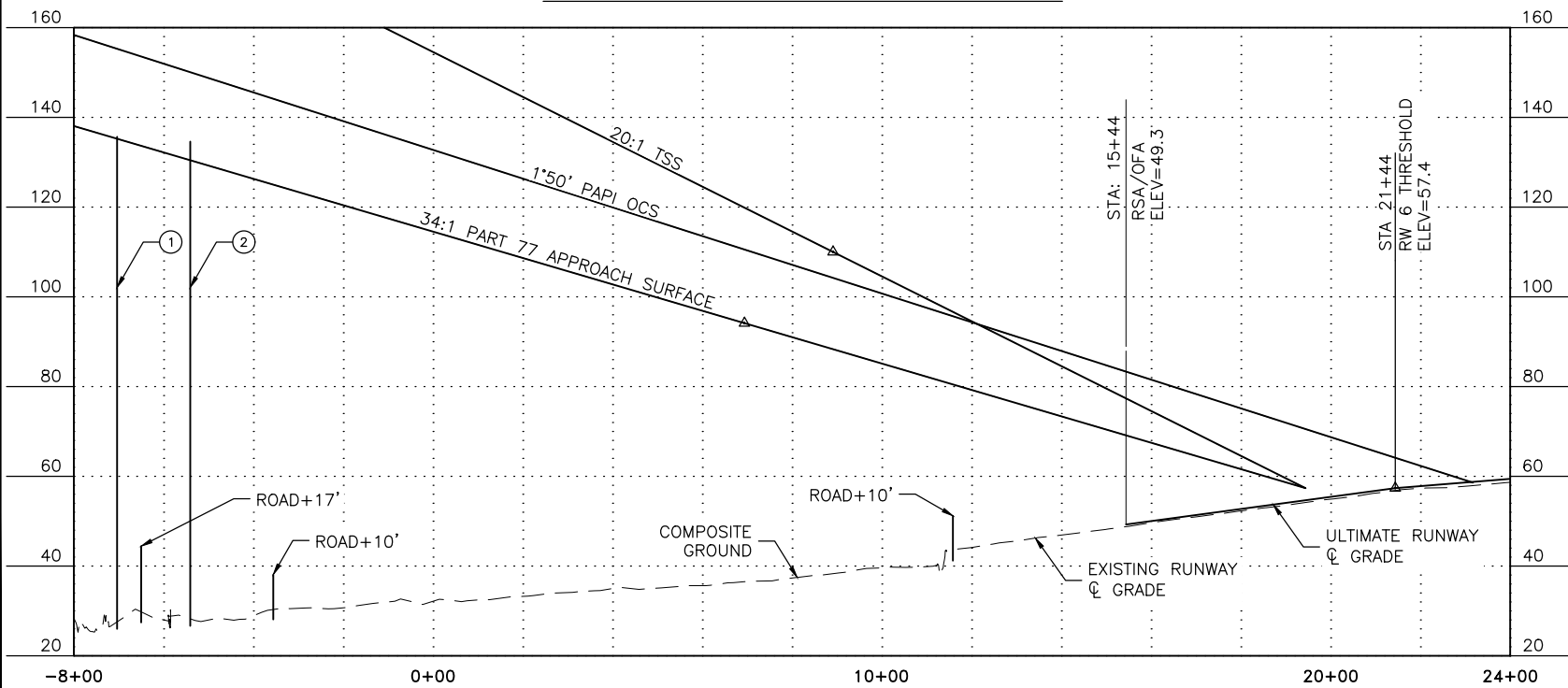
SHEET
4 OF
13



RW 6 INNER APPROACH PLAN

RUNWAY 6 PART 77 SURFACE OBSTRUCTION TABLE (INNER PORTION)							
ID	DESCRIPTION	LATITUDE	LONGITUDE	STATION/OFFSET	ELEV. (MSL)	PENETRATION	DISPOSITION
1	TREE	61°07'58.73" N	146°16'45.85" W	-7+26/481' LT	137.9	2.0	REMOVE
2	TREE	61°07'59.59" N	146°16'42.76" W	-5+63/544' LT	136.9	5.8	REMOVE

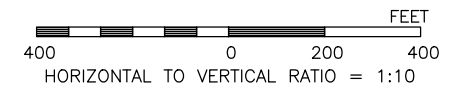
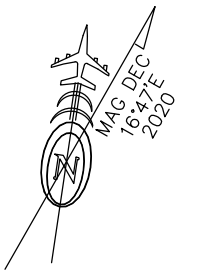
RUNWAY 6 THRESHOLD SITING SURFACE OBSTRUCTION TABLE							
ID	DESCRIPTION	LATITUDE	LONGITUDE	STATION/OFFSET	ELEV. (MSL)	PENETRATION	DISPOSITION
	NONE						



RW 6 INNER APPROACH PROFILE

NOTES:

1. OBSTRUCTION SURVEY COMPLETED 2018 IN SUPPORT OF FAA AERONAUTICAL SURVEY VDZ-227651.
2. TSS DIMENSION 200'x400'x3400'x10000' (RW TYPE 4, TABLE 3-2, AC 150/5300-13A, AS MODIFIED BY EB99A).
3. TSS SLOPE EXTENDS 10000' AT 20:1.
4. PART 77 APPROACH SURFACE DIMENSION 200'x500'x3500'x10000'.
5. PART 77 APPROACH SURFACE EXTENDS 10000' AT 34:1.
6. PART 77 ROAD OBSTRUCTION HEIGHTS AND SURFACE CLEARANCES ARE INCLUDED (17' FOR INTERSTATE HIGHWAY & 10' FOR PRIVATE ROAD).
7. PAPI OCS EXTENDS HORIZONTALLY FROM BOTH SIDES OF RUNWAY CENTERLINE AT 10' FOR 4 NM.
8. PAPI OCS SLOPE EXTENDS 4 NM AT 1:50'.



DESIGN MLH
 DRAWN MLH
 CHECKED JGL

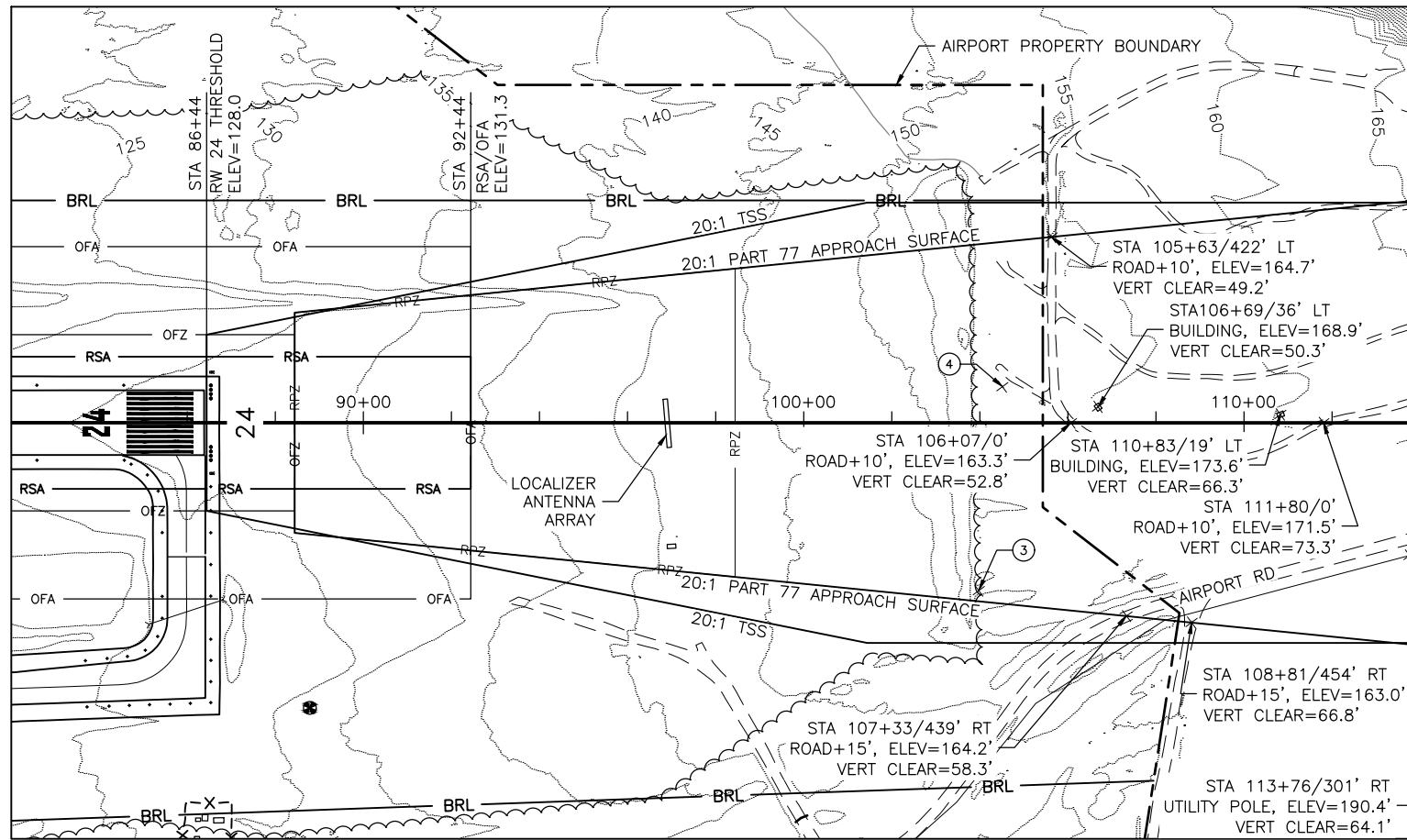
STATE OF ALASKA
 DEPARTMENT OF TRANSPORTATION AND PUBLIC FACILITIES
 NORTHERN REGION-AVIATION
 APPROVED: *Albert Beck* DATE 12/14/21
 ALBERT M.L. BECK, P.E. DESIGN GROUP CHIEF

BY	DATE	NO.	REVISIONS	FAA

BY	DATE	NO.	REVISIONS	FAA

VALDEZ PIONEER FIELD
 VALDEZ, ALASKA
 EXISTING & ULTIMATE
 INNER APPROACH - RUNWAY 6

SHEET
 5 OF
 13



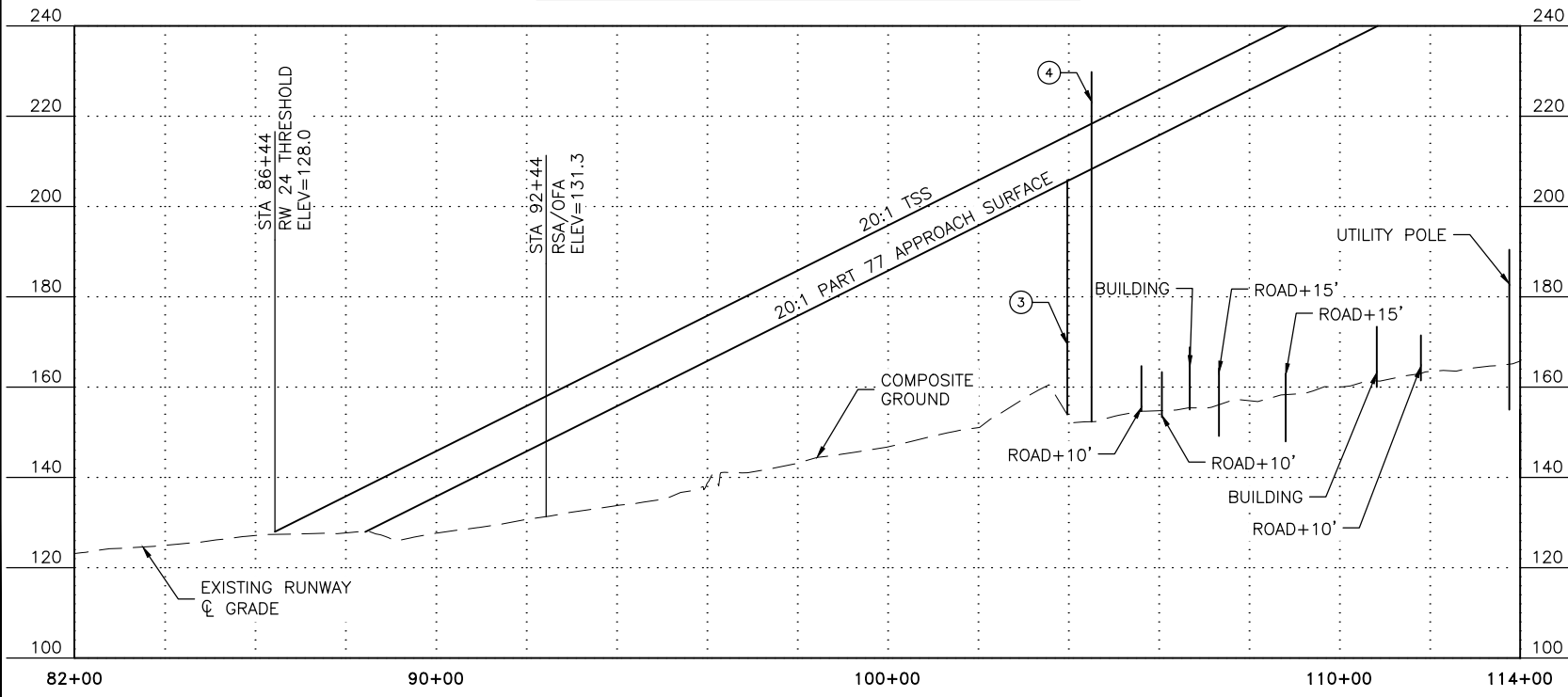
RW 24 INNER APPROACH PLAN

RUNWAY 24 PART 77 SURFACE OBSTRUCTION TABLE (INNER PORTION)

ID	DESCRIPTION	LATITUDE	LONGITUDE	STATION/OFFSET	ELEV. (MSL)	PENETRATION	DISPOSITION
3	TREE	61°08'06.95" N	146°12'59.24" W	103+98/381' RT	205.9	0.2	REMOVE
4	TREE	61°08'11.54" N	146°12'59.59" W	104+51/82' LT	229.8	21.5	REMOVE

RUNWAY 24 THRESHOLD SITING SURFACE OBSTRUCTION TABLE

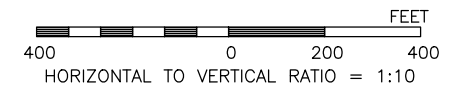
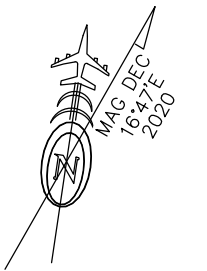
ID	DESCRIPTION	LATITUDE	LONGITUDE	STATION/OFFSET	ELEV. (MSL)	PENETRATION	DISPOSITION
4	TREE	61°08'11.54" N	146°12'59.59" W	104+51/82' LT	229.8	11.4	REMOVE



RW 24 INNER APPROACH PROFILE

NOTES:

1. OBSTRUCTION SURVEY COMPLETED 2018 IN SUPPORT OF FAA AERONAUTICAL SURVEY VDZ-227651.
2. TSS DIMENSION 400'x1000'x1500'x8500' (RW TYPE 3, TABLE 3-2, AC 150/5300-13A, AS MODIFIED BY EB99A).
3. TSS SLOPE EXTENDS 8500' AT 20:1.
4. PART 77 APPROACH SURFACE DIMENSION 200'x500'x1500'x5000'.
5. PART 77 APPROACH SURFACE EXTENDS 5000' AT 20:1.
6. PART 77 ROAD OBSTRUCTION HEIGHTS AND SURFACE CLEARANCES ARE INCLUDED (15' FOR PUBLIC ROAD & 10' FOR PRIVATE ROAD).



DESIGN MLH
 DRAWN MLH
 CHECKED JGL

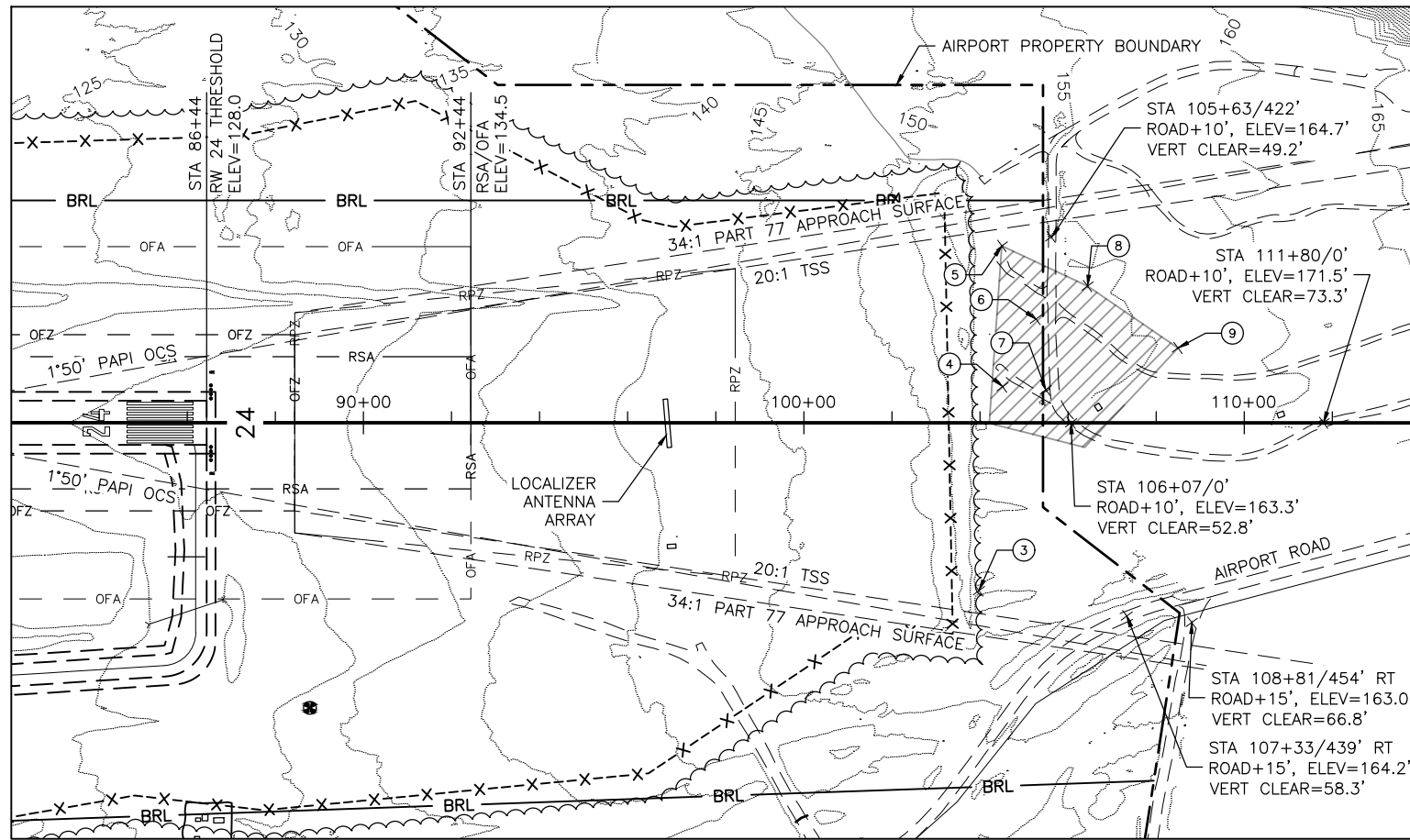
STATE OF ALASKA
 DEPARTMENT OF TRANSPORTATION AND PUBLIC FACILITIES
 NORTHERN REGION-AVIATION
 APPROVED: *Albert Beck* DATE 12/14/21
 ALBERT M.L. BECK, P.E. DESIGN GROUP CHIEF

BY	DATE	NO.	REVISIONS	FAA

BY	DATE	NO.	REVISIONS	FAA

VALDEZ PIONEER FIELD
 VALDEZ, ALASKA
 EXISTING INNER APPROACH - RUNWAY 24

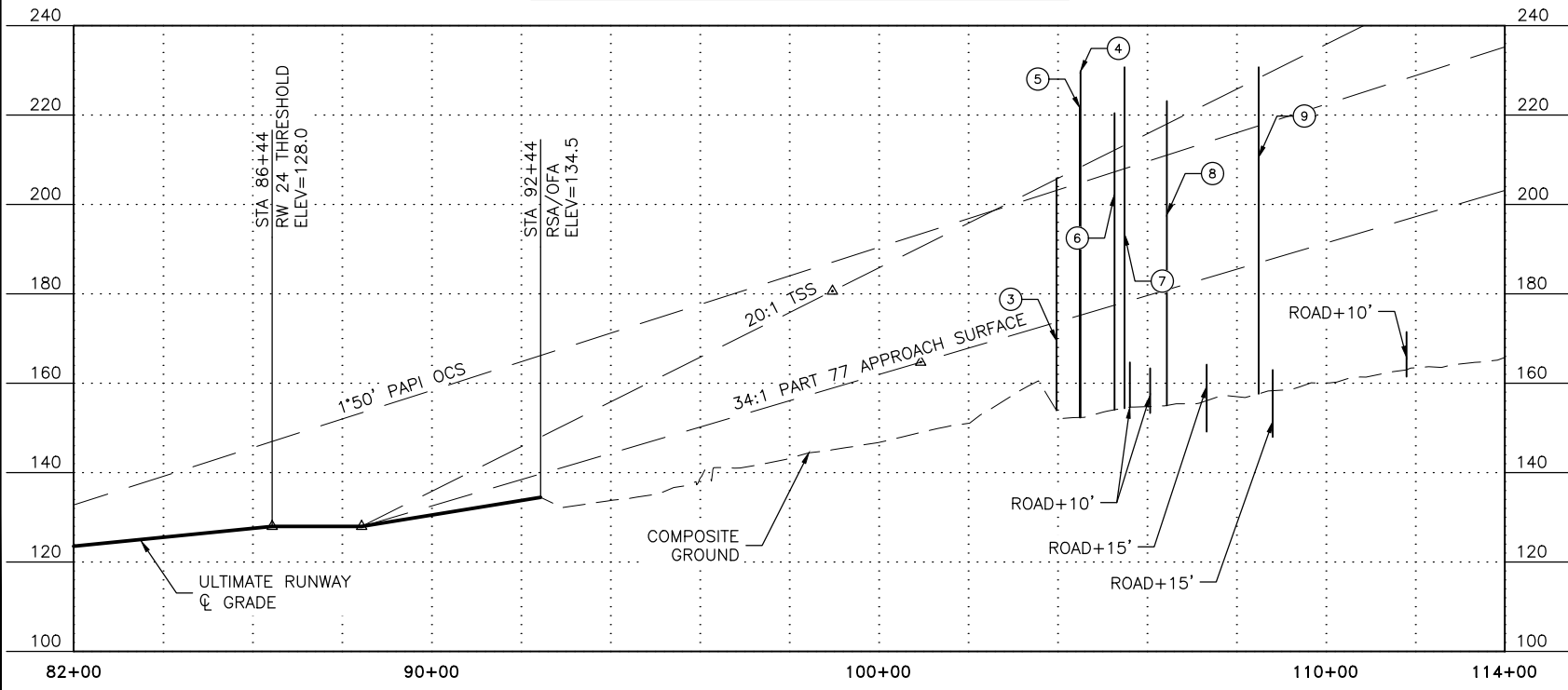
SHEET
 6 OF 13



RW 24 INNER APPROACH PLAN

RUNWAY 24 PART 77 SURFACE OBSTRUCTION TABLE (INNER PORTION)							
ID	DESCRIPTION	LATITUDE	LONGITUDE	STATION/OFFSET	ELEV. (MSL)	PENETRATION	DISPOSITION
3	TREE	61°08'06.95" N	146°12'59.24" W	103+98/381' RT	205.9	0.2	REMOVE
4	TREE	61°08'11.54" N	146°12'59.59" W	104+51/82' LT	229.8	21.5	REMOVE
5	TREE	61°08'14.65" N	146°13'00.61" W	104+50/402' LT	211.6	13.4	REMOVE
6	TREE	61°08'13.14" N	146°12'58.53" W	105+27/236' LT	220.4	8.3	REMOVE
7	TREE	61°08'11.61" N	146°12'57.59" W	105+50/75' LT	230.7	17.5	REMOVE
8	TREE	61°08'14.05" N	146°12'56.41" W	106+44/310' LT	223.1	5.2	REMOVE
9	TREE	61°08'12.99" N	146°12'51.84" W	108+50/170' LT	230.7	2.5	REMOVE

RUNWAY 24 THRESHOLD SITING SURFACE OBSTRUCTION TABLE							
ID	DESCRIPTION	LATITUDE	LONGITUDE	STATION/OFFSET	ELEV. (MSL)	PENETRATION	DISPOSITION
4	TREE	61°08'11.54" N	146°12'59.59" W	104+51/82' LT	229.8	11.4	REMOVE
5	TREE	61°08'14.65" N	146°13'00.61" W	104+50/402' LT	221.6	3.4	REMOVE
7	TREE	61°08'11.61" N	146°12'57.59" W	105+50/75' LT	230.7	7.5	REMOVE



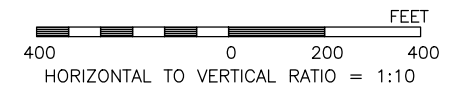
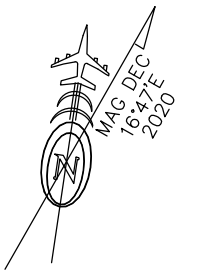
RW 24 INNER APPROACH PROFILE

NOTES:

- OBSTRUCTION SURVEY COMPLETED 2018 IN SUPPORT OF FAA AERONAUTICAL SURVEY VDZ-227651.
- TSS DIMENSION 200'x400'x3400'x10000' (RW TYPE 4, TABLE 3-2, AC 150/5300-13A, AS MODIFIED BY EB99A).
- TSS SLOPE EXTENDS 10000' AT 20:1.
- PART 77 APPROACH SURFACE DIMENSION 200'x5000'x3500'x10000'.
- PART 77 APPROACH SURFACE EXTENDS 10000' AT 34:1.
- PART 77 ROAD OBSTRUCTION HEIGHTS AND SURFACE CLEARANCES ARE INCLUDED (15' FOR PUBLIC ROAD & 10' FOR PRIVATE ROAD).
- PAPI OCS EXTENDS HORIZONTALLY FROM BOTH SIDES OF RUNWAY CENTERLINE AT 10' FOR 4 NM.
- PAPI OCS SLOPE EXTENDS 4 NM AT 1°50'.

LEGEND

AREA OF SURFACE PENETRATION



DESIGN MLH
DRAWN MLH
CHECKED JGL

STATE OF ALASKA
DEPARTMENT OF TRANSPORTATION AND PUBLIC FACILITIES
NORTHERN REGION-AVIATION
APPROVED: *Albert Beck* DATE 12/14/21
ALBERT M.L. BECK, P.E. DESIGN GROUP CHIEF

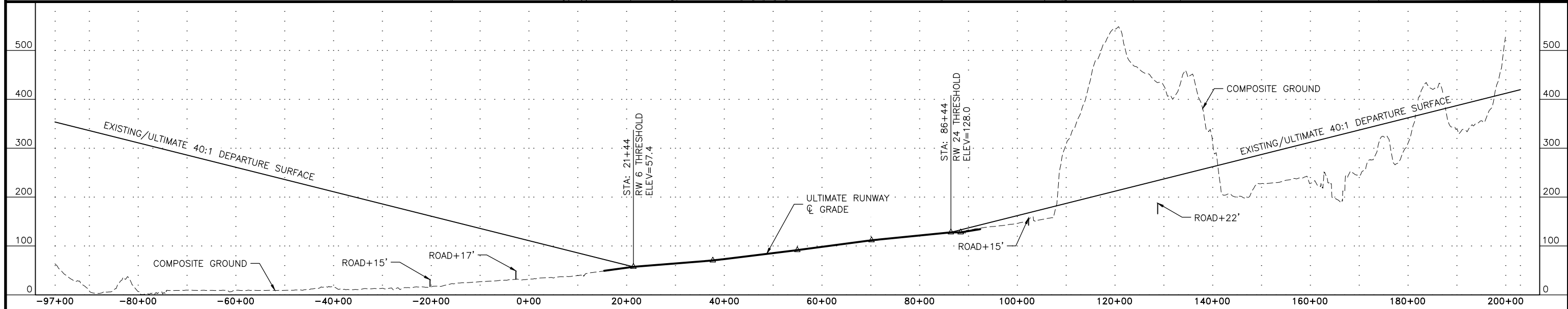
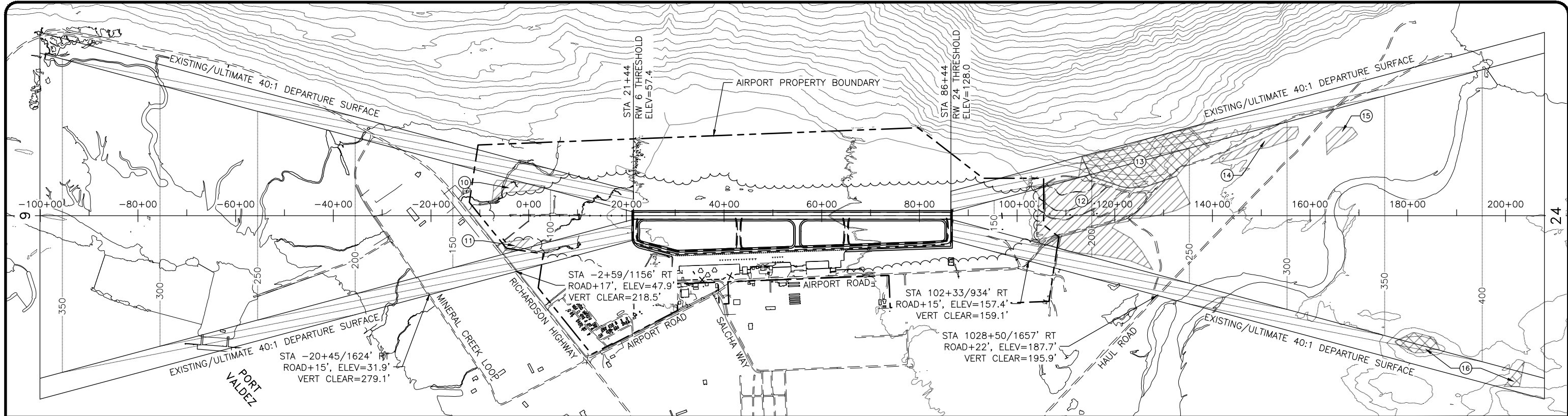
BY	DATE	NO.	REVISIONS	FAA

BY	DATE	NO.	REVISIONS	FAA

VALDEZ PIONEER FIELD
VALDEZ, ALASKA
ULTIMATE INNER APPROACH - RUNWAY 24

SHEET
7 OF
13

6/7/2021 4:25 PM



RUNWAY 6 40:1 DEPARTURE SURFACE OBSTRUCTION TABLE

ID#	DESCRIPTION	ELEV. (MSL)	PENETRATION	DISPOSITION
10	TREES	129.4	19.6 MAXIMUM	REMOVE
11	TREES	130.6	11.8 MAXIMUM	REMOVE

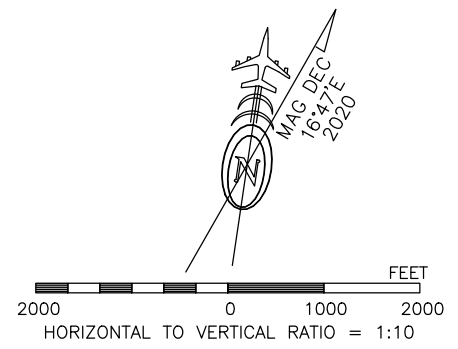
- NOTES:**
- DEPARTURE SURFACE DIMENSION 1000'x7512'x12152' (FAA ENGINEERING BRIEF #99A, TABLE 3-2, LINE 7, FIGURE 1 & FIGURE 2).
 - DEPARTURE SURFACE EXTENDS 12152' AT 40:1.
 - PART 77 ROAD OBSTRUCTION HEIGHTS AND SURFACE CLEARANCES ARE INCLUDED (17' FOR INTERSTATE HIGHWAY, 15' FOR PUBLIC ROAD, AND, 10' FOR PRIVATE ROAD.)

RUNWAY 24 40:1 DEPARTURE SURFACE OBSTRUCTION TABLE

ID#	DESCRIPTION	ELEV. (MSL)	PENETRATION	DISPOSITION
12	TREES	545.5	48.1 MAXIMUM	TO REMAIN
13	TERRAIN	545.5	194.9 MAXIMUM	TO REMAIN
14	TREES	320.7	22.4 MAXIMUM	REMOVE
15	TREES	356.7	23.3 MAXIMUM	REMOVE
16	TERRAIN	467.1	130.1 MAXIMUM	TO REMAIN

LEGEND

- TREES OBSTRUCTION
- TERRAIN OBSTRUCTION



U:\2047063700\drawing\C\Sheets\00291_C_8_EX_ULT_DEP-EX DEPT

DESIGN MLH
 DRAWN MLH
 CHECKED JGL

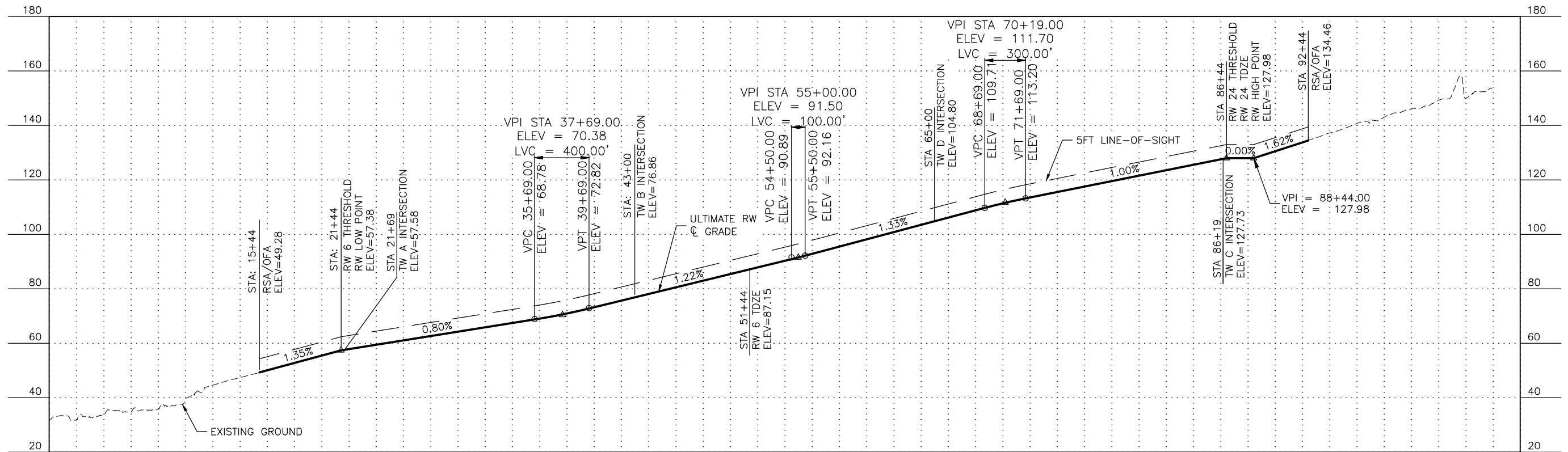
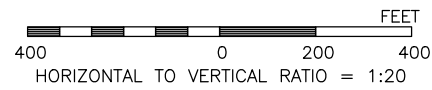
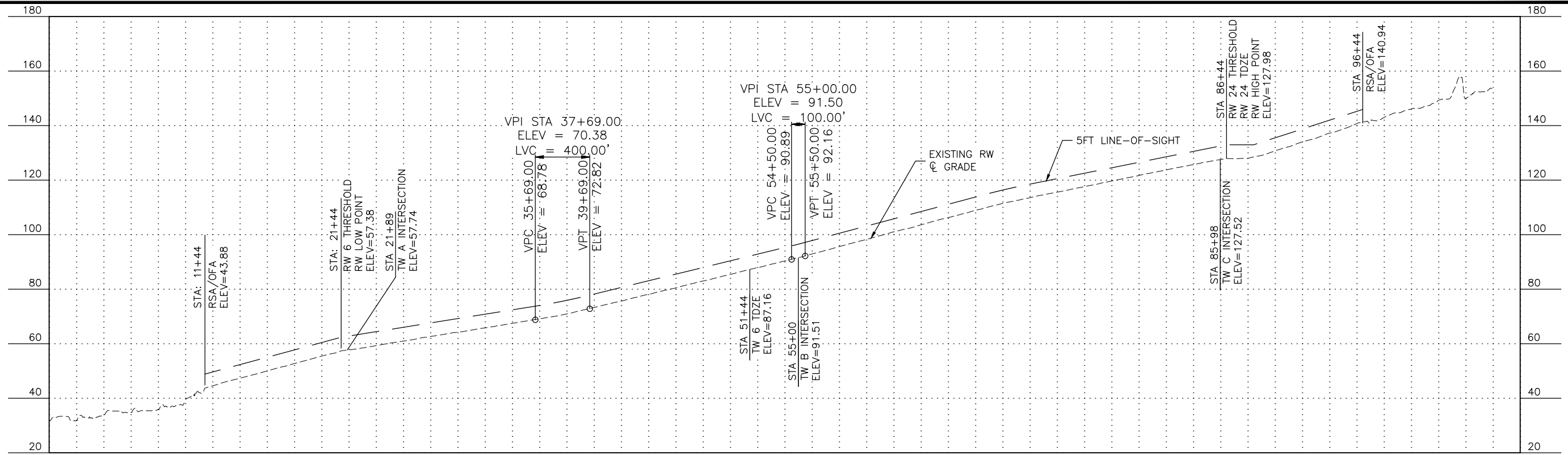
STATE OF ALASKA
 DEPARTMENT OF TRANSPORTATION AND PUBLIC FACILITIES
 NORTHERN REGION-AVIATION
 APPROVED: *Albert Beck* DATE 12/14/21
 ALBERT M.L. BECK, P.E. DESIGN GROUP CHIEF

BY	DATE	NO.	REVISIONS	FAA

BY	DATE	NO.	REVISIONS	FAA

VALDEZ PIONEER FIELD
 VALDEZ, ALASKA
 EXISTING & ULTIMATE DEPARTURE SURFACE

SHEET
 8 OF
 13



DESIGN MLH
 DRAWN MLH
 CHECKED JGL

STATE OF ALASKA
 DEPARTMENT OF TRANSPORTATION AND PUBLIC FACILITIES
 NORTHERN REGION-AVIATION

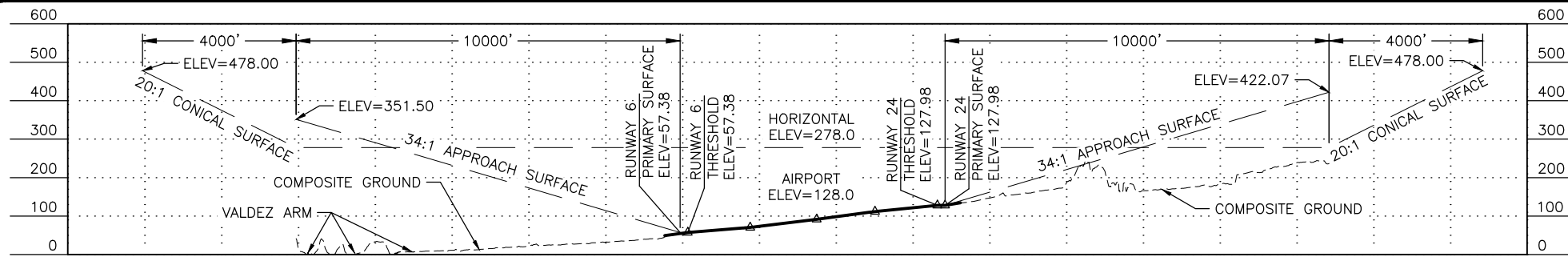
APPROVED: *Albert Beck* DATE 12/14/21
 ALBERT M.L. BECK, P.E. DESIGN GROUP CHIEF

BY	DATE	NO.	REVISIONS	FAA

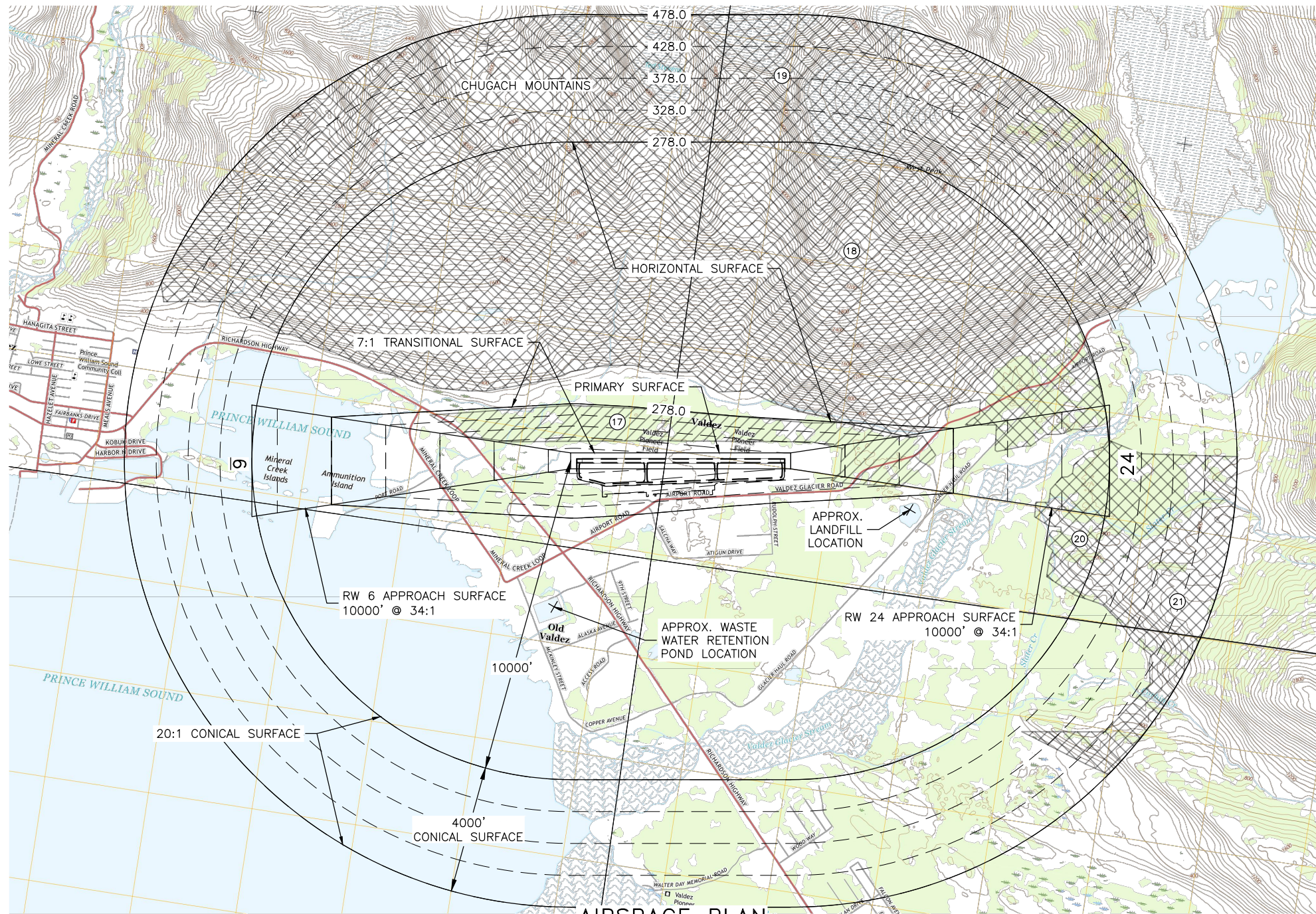
BY	DATE	NO.	REVISIONS	FAA

VALDEZ PIONEER FIELD
 VALDEZ, ALASKA
 EXISTING & ULTIMATE PROFILES

SHEET
 9 OF 13



AIRSPACE PROFILE



AIRSPACE PLAN



FAR PART 77 SURFACE OBSTRUCTION TABLE (OUTER PORTION)

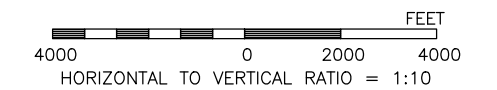
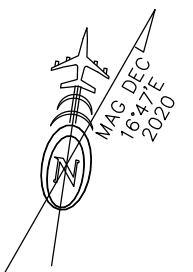
ID	DESCRIPTION	PENETRATION	DISPOSITION
17	TREES	57' MAXIMUM	REMOVE
18	TERRAIN, HORIZONTAL SURFACE	4960' MAXIMUM	TO REMAIN
19	TERRAIN, CONICAL SURFACE	4940' MAXIMUM	TO REMAIN
20	TERRAIN, HORIZONTAL SURFACE	227' MAXIMUM	TO REMAIN
21	TERRAIN, CONICAL SURFACE	510' MAXIMUM	TO REMAIN

NOTES:

- AIRPORT ELEVATION IS 128.0 FEET.
- ALL CONTOURS ARE IN FEET. BASEMAP DATA IS FROM USGS VALDEZ (A-7 SE & A-6 SW), USGS DATUM IS WGS84.
- PRIMARY SURFACE WIDTH IS 500 FEET.
- REFER TO INNER PORTION OF THE APPROACH SURFACE DRAWING FOR CLOSE-IN OBSTRUCTIONS.
- THERE ARE NO KNOWN ORDINANCES OR STATUTES IN EFFECT THAT SPECIFY HEIGHT RESTRICTIONS.
- APPROACH SURFACES ARE 34:1 BEGINNING AT 200 FEET BEYOND THE THRESHOLDS.

LEGEND

-  TREES OBSTRUCTION
-  TERRAIN OBSTRUCTION



DESIGN MLH
 DRAWN MLH
 CHECKED JGL

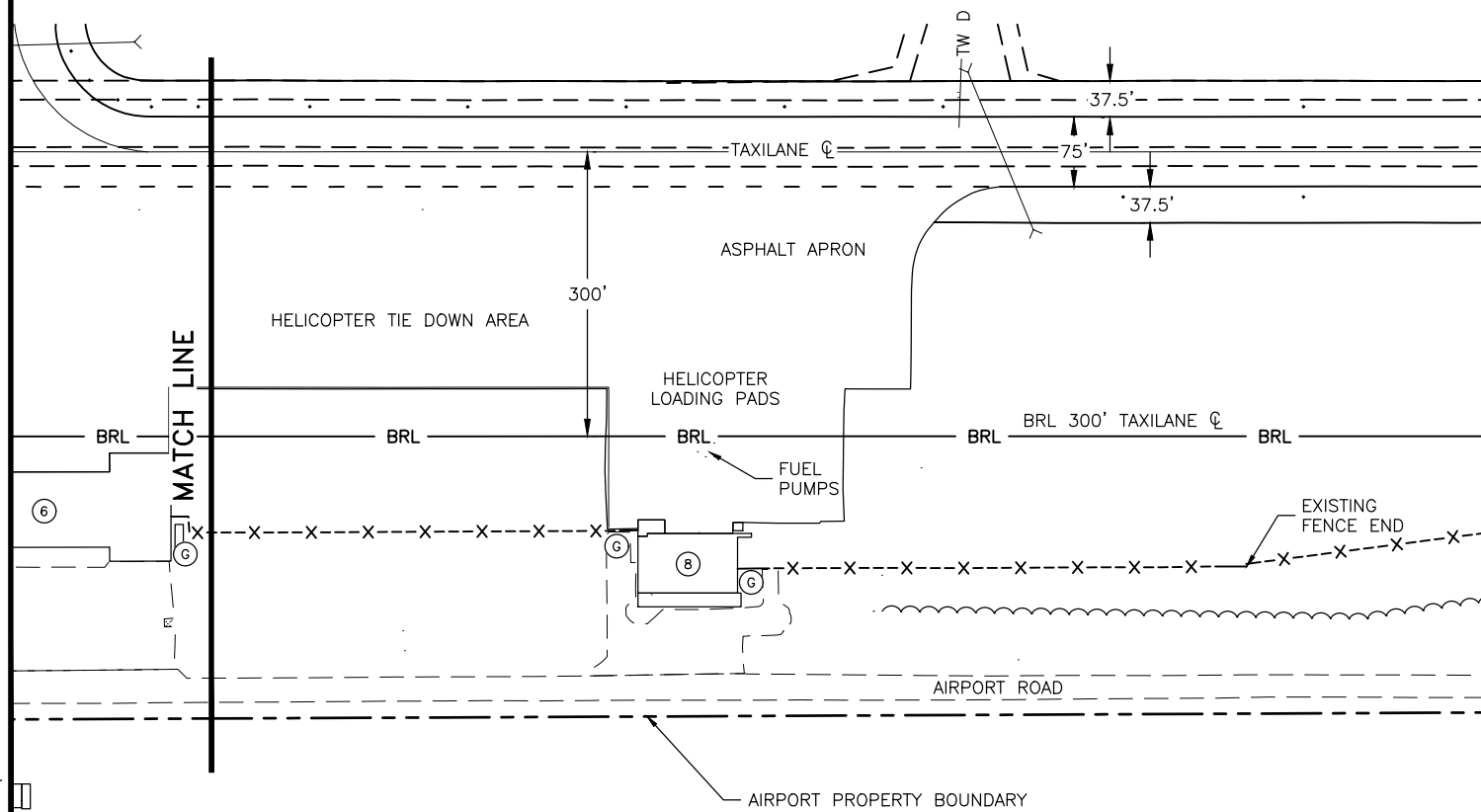
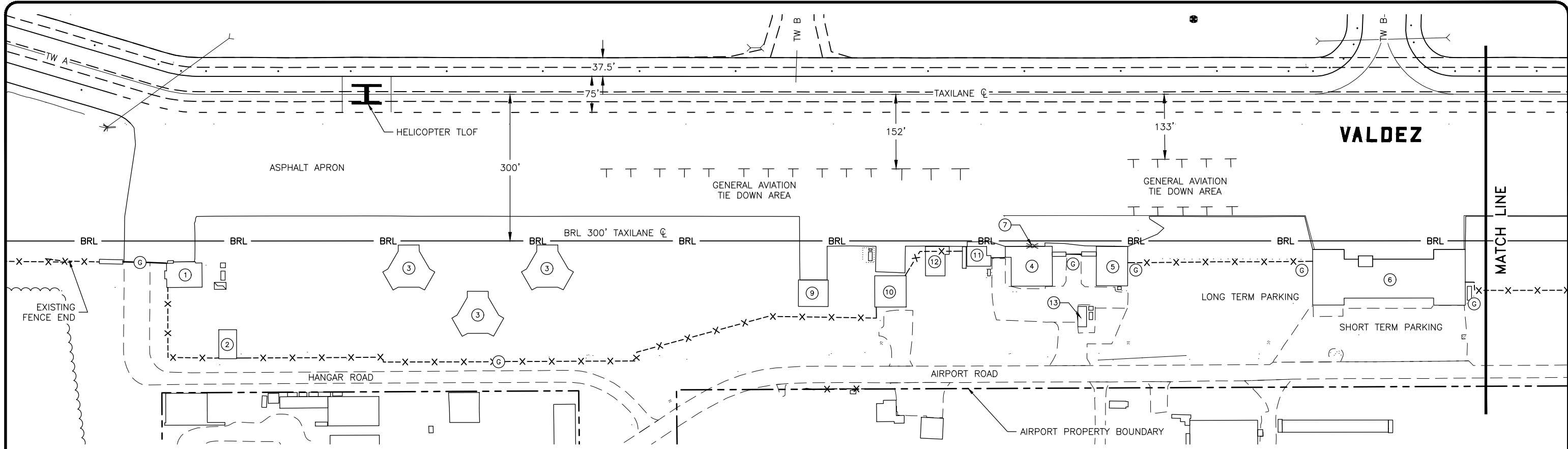
STATE OF ALASKA
 DEPARTMENT OF TRANSPORTATION AND PUBLIC FACILITIES
 NORTHERN REGION-AVIATION
 APPROVED: *Albert Beck* DATE 12/14/21
 ALBERT M.L. BECK, P.E. DESIGN GROUP CHIEF

BY	DATE	NO.	REVISIONS	FAA

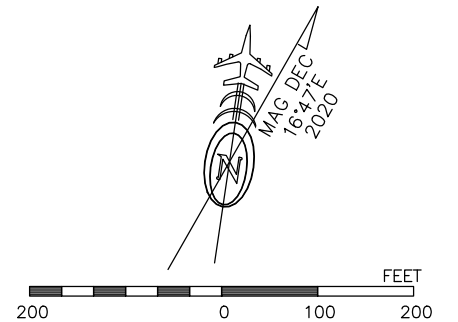
BY	DATE	NO.	REVISIONS	FAA

VALDEZ PIONEER FIELD
 VALDEZ, ALASKA
 AIRPORT AIRSPACE (FAR PART 77)

SHEET
 10 OF
 13



BUILDING DATA TABLE					
#	STRUCTURE NAME	TOP ELEV	OBSTRUCTION WARNING (Y/N)		REMARKS
			EXISTING	ULTIMATE	
1	HANGAR	68.2	N	N	
2	OFFICE	73.9	N	N	
3	HEXAGON HANGARS	80.9	N	N	
4	ARFF	88.9	N	N	
5	SREB	91.4	N	N	
6	AIRPORT TERMINAL	105.8	N	N	
7	ROTATING BEACON	74.9	N	N	
8	ERA OFFICE	114.7	N	N	
9	CIVIL AIR PATROL	91.0	N	N	
10	VALDEZ AERO SERVICES, INC.	31.2	N	N	
11	EXISTING SAND STORAGE SHED ULTIMATE UREA STORAGE SHED	101.9	N	N	
12	ULTIMATE SAND STORAGE SHED	101.9	N	N	
13	EXISTING UREA STORAGE SHED	90.6	N	N	



DESIGN MLH
 DRAWN MLH
 CHECKED JGL

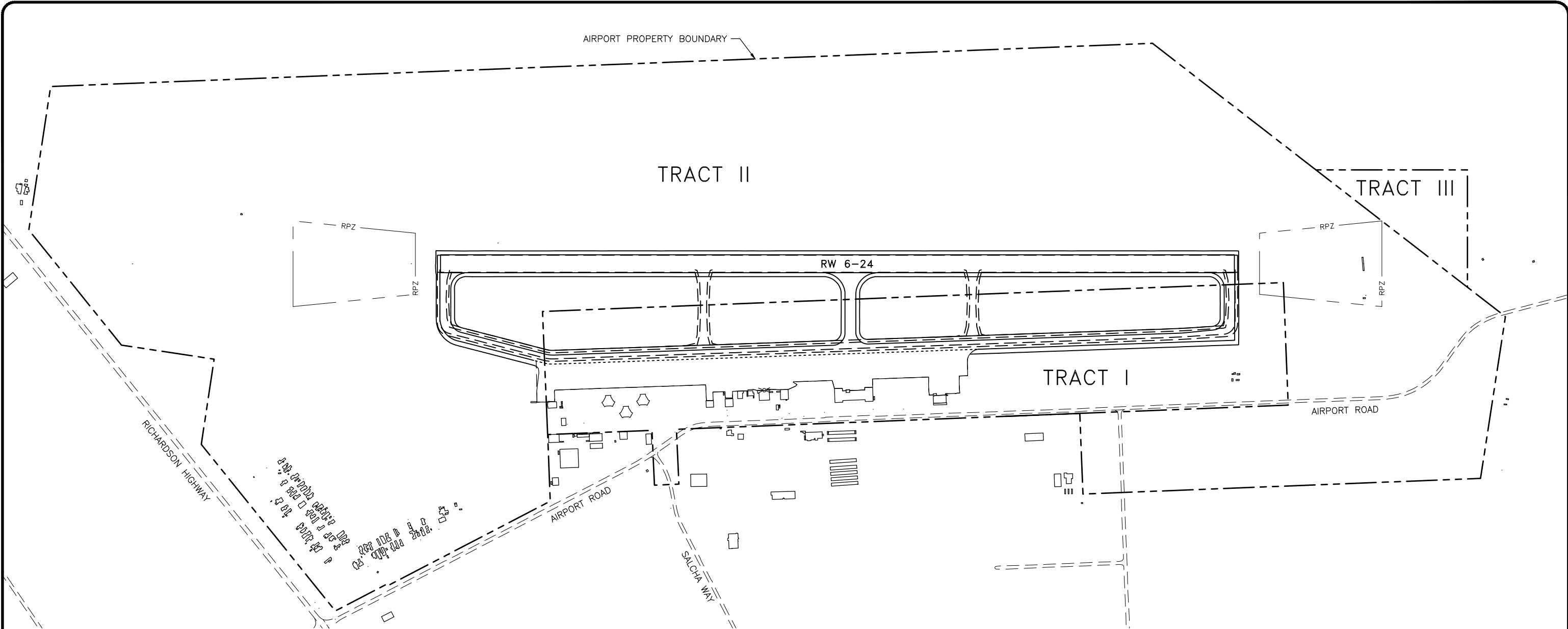
STATE OF ALASKA
 DEPARTMENT OF TRANSPORTATION AND PUBLIC FACILITIES
 NORTHERN REGION-AVIATION
 APPROVED: *Albert Beck* DATE 12/14/21
 ALBERT M.L. BECK, P.E. DESIGN GROUP CHIEF

BY	DATE	NO.	REVISIONS	FAA

BY	DATE	NO.	REVISIONS	FAA

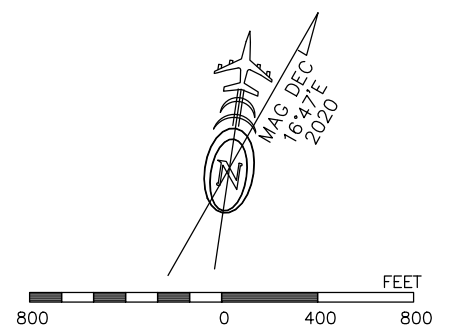
VALDEZ PIONEER FIELD
 VALDEZ, ALASKA
 TERMINAL AREA PLAN

SHEET
 11 OF 13



LEGEND	
	AIRPORT BOUNDARY
	ROADWAYS
	RUNWAY/TAXIWAY/APRON EDGE
	BUILDING

PROPERTY STATUS								
TRACT	PARCEL	ACRES	GRANTOR	INTEREST	CONVEYANCE DOC	ACQUIRED DATE	FAA PROJ #	RD INFO
I		139.76	DNR	QUIT CLAIM DEED		4/11/74	8-02-0311-01	INFO
II		682.77	DNR	ILMT		7/18/72	8-02-0311-01	INFO
III		13.63	CITY OF VALDEZ	DEED		6/14/04	3-02-0311-06	INFO



DESIGN MLH
 DRAWN MLH
 CHECKED JGL

STATE OF ALASKA
 DEPARTMENT OF TRANSPORTATION AND PUBLIC FACILITIES
 NORTHERN REGION-AVIATION
 APPROVED: *Albert Beck* DATE 12/14/21
 ALBERT M.L. BECK, P.E. DESIGN GROUP CHIEF

BY	DATE	NO.	REVISIONS	FAA

BY	DATE	NO.	REVISIONS	FAA

VALDEZ PIONEER FIELD
 VALDEZ, ALASKA
 AIRPORT PROPERTY MAP

SHEET 13 OF 13