

GENERAL NOTES:

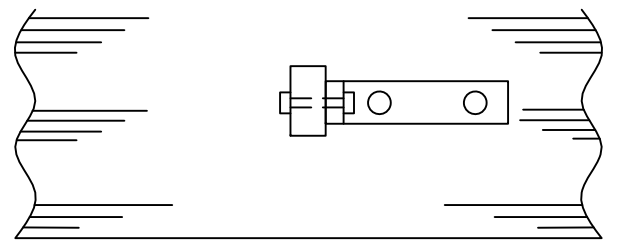
- I. Culvert marker post shall be installed with galvanized steel hardware meeting the following requirements: Galvanizing for nuts and washers shall meet the requirements of ASTM A-153, Class C. Galvanizing for steel mounting supports shall meet the requirements of MIL-P-26915A, or ASTM A-153, Class C.

O  
 23 + 45  
 18" x 48"  
 O

Sta. and size of Culvert to be stamped into a 2"x4"x0.064" thick brass plate, fastened, with No. 8 round head brass screws, to the marker post as shown. Plate to be on side of post facing traffic.

DIRECTION OF TRAFFIC

Shoulder of Road

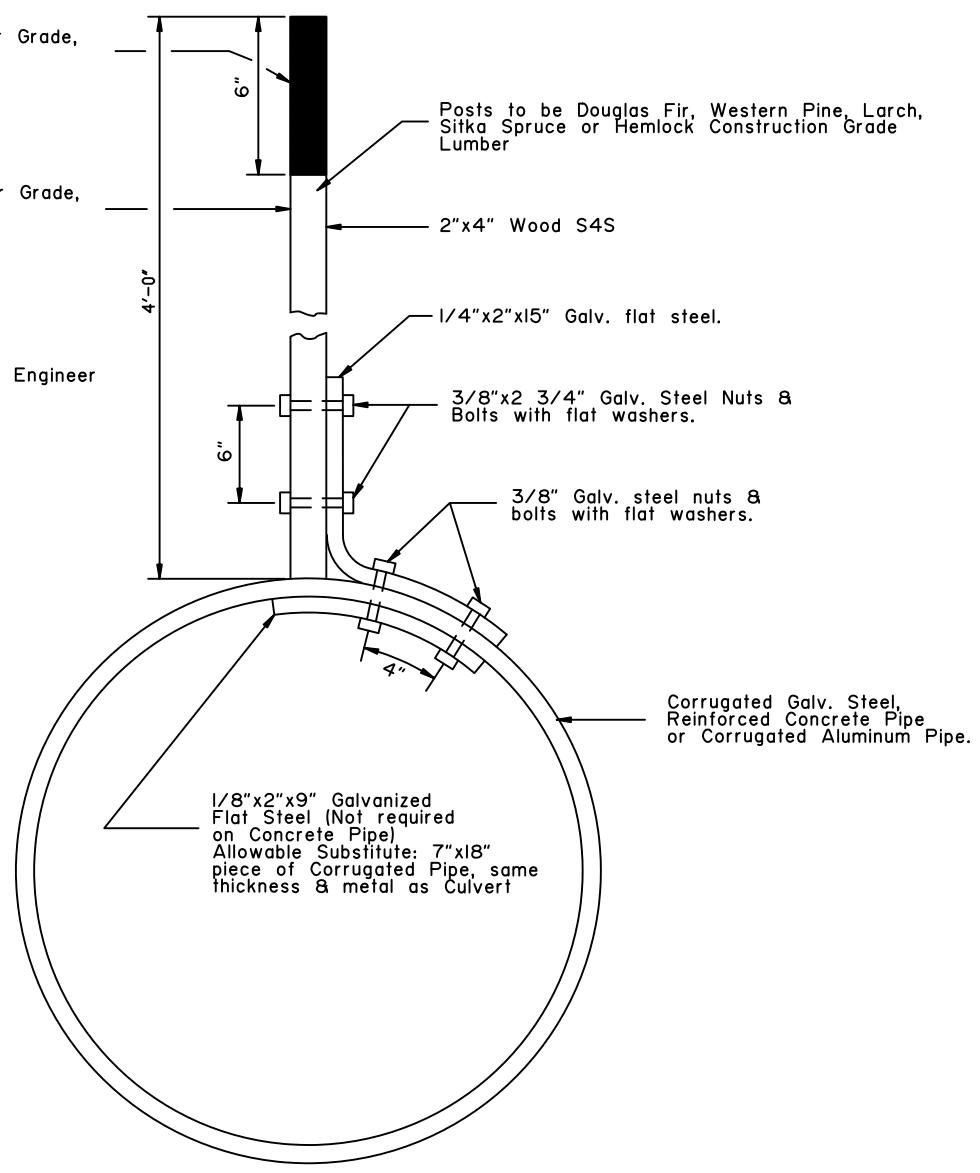


TOP VIEW

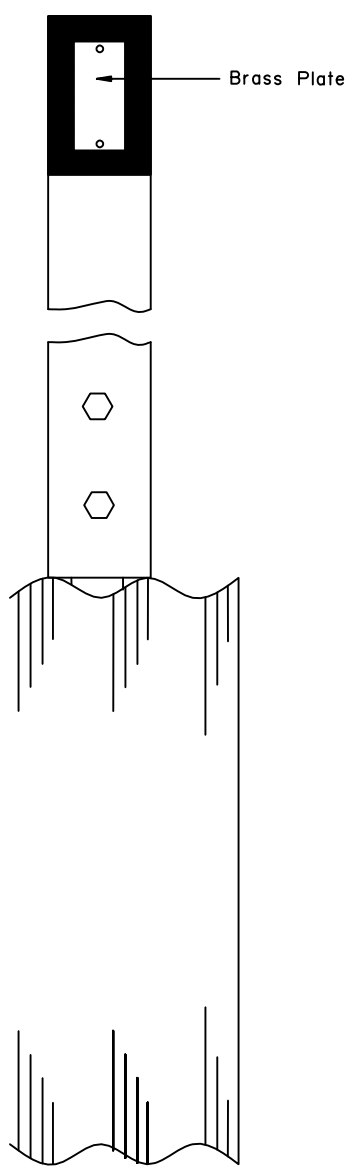
\* Black Paint, Exterior Grade, Semi Gloss Enamel.

\* White Paint, Exterior Grade, Semi Gloss Enamel

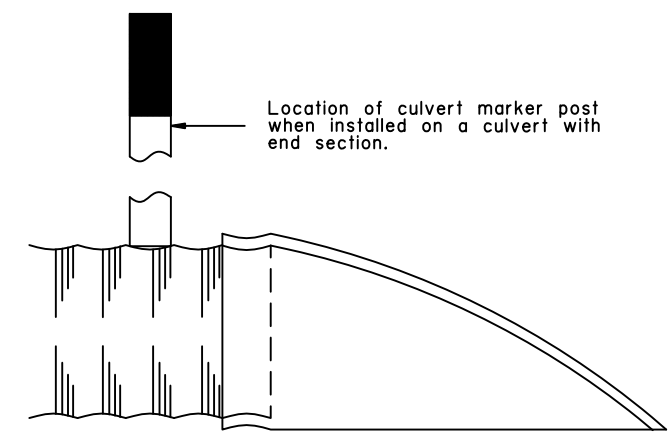
\* As approved by the Engineer



END VIEW



SIDE VIEW



END SECTION SIDE VIEW

State of Alaska DOT&PF  
ALASKA STANDARD PLAN

CULVERT MARKER POST

Adopted as an Alaska Standard Plan by: *Kenneth J. Fisher*  
Kenneth J. Fisher, P.E.  
Chief Engineer

Adoption Date: 02/08/2019

Last Code and Stds. Review By: Date:

Next Code and Standards Review date: 02/08/2029

D-09.00